

Free Evo



- Very compact scrubbing machines suitable to work for the maintenance cleaning of limited-size areas (up to 1.500 m²)
- Especially suitable for cleaning: car shops, sales points, gym, health care
- Control panel with operator presence safety system
- Low level battery indicator: brush/vacuum and traction progressive cut off
- Solution water filter and solenoid valve (battery model only)
- Easy access to the battery compartment
- Quick drain and easily inspectable recovery tank
- Non-marking wheels
- Roto-molded polyethylene tanks, shock and acid resistant
- The lower tank also serves as battery compartment
- Low noise operation thanks to the protected positioning of vacuum motor.

Standard equipment:



- 5.511.1097
PP brush Ø 483 mm - 19"



- 4.508.X468
Front squeegee blade L.830 mm Shore 40 Th. 2.5 mm
- 4.508.X467
Rear squeegee blade L.870 mm Shore 40 Th. 3 mm



- 0.108.0042
On-board Battery charger 24V 10A
only for model code:
8.527.0001 - 8.527.0002
8.527.0010 - 8.527.0012



- 0.107.0054
Maintenance free battery 12V 75Ah BT DC 5.5
only for model code:
8.527.0010 - 8.527.0012

Other available versions:

- 8.527.0010 - Free Evo 50B with batteries and battery charger
- 8.527.0012 - Free Evo 50BT with batteries and battery charger



Watch the video on youtube:
www.youtube.com/lavorpro

	Free Evo 50E	Free Evo 50B	Free Evo 50B	Free Evo 50BT	Free Evo 50BT
code	8.527.0003	8.527.0004	8.527.0001	8.527.0011	8.527.0002
power supply	230 V - 50 Hz	24V	24V (battery charger included)	24V	24V (battery charger included)
scrubbing / squeegee width	500 / 800 mm	500 / 800 mm	500 / 800 mm	500 / 800 mm	500 / 800 mm
max working capacity	2000 m ² /h	2000 m ² /h	2000 m ² /h	2000 m ² /h	2000 m ² /h
solution tank capacity	44 l / 11,63 gal	44 l / 11,63 gal	44 l / 11,63 gal	44 l / 11,63 gal	44 l / 11,63 gal
recovery tank capacity	50-60 l / 13,21-16 gal	50-60 l / 13,21-16 gal	50-60 l / 13,21-16 gal	50-60 l / 13,21-16 gal	50-60 l / 13,21-16 gal
traction/traction motor	mechanical	mechanical	mechanical	automatic/150W	automatic/150W
RPM / pressure on the brushes	150/20 kg / 44,09 lbs	150/18 kg / 44,09 lbs	150/18 kg / 44,09 lbs	150/18 kg / 39,68 lbs	150/18 kg / 44,09 lbs
brush motor power	550W	550W	550W	550W	550W
detergent solution system	solenoid valve	solenoid valve	solenoid valve	solenoid valve	solenoid valve
depression / vacuum motor	1700 mmH ₂ O/1000W	1280mmH ₂ O/400W	1280 mmH ₂ O/400W	1280 mmH ₂ O/400W	1280 mmH ₂ O/400W
dimensions / weight	116x46x98cm / 115 kg	116x51x98cm / 114 kg	116x51x98cm / 116 kg	116x51x98cm / 118 kg	116x51x98cm / 120 kg



Powerful gearmotor; metal brush plate with integrated plastic splash guard/bumper.

Optional accessories:



- 2 x 0.107.0002
Tubular battery Pb-acid
12V 118Ah C5



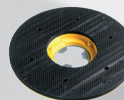
- 2 x 0.107.0063
GEL Battery 12 MFP 105
12V 105Ah C5



- 4.508.1178 Polyurethane
front blade L.830 TH. 3
- 4.508.1177 Polyurethane
rear blade L.870 TH. 4



- 5.511.1098
Tynex brush Ø 483 mm-19"
- 5.511.1128
PP 0,03 brush Ø 483 mm-19"
- 5.511.1206
PES brush Ø 483 mm - 19"

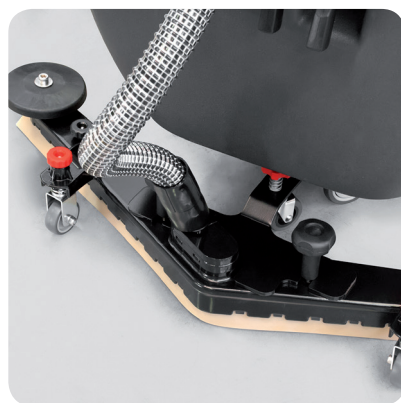


- 5.511.1099
EWU pad driver Ø 483
mm-19"



- 6.508.0034
Abrasive pad Ø 483 mm-19"
- beige (5 pcs.)
- 6.508.0041
Abrasive pad Ø 483 mm-19"
- green (5 pcs.)
- 6.508.0048
Abrasive pad Ø 483 mm-19"
- black (5 pcs.)

The outflow of the detergent solution is controlled by a solenoid valve. The actuation of the solenoid valve is operated by the control lever, avoiding the detergent solution outflow when the brush is stopped during the interruptions of work.



Renovated squeegee with new pressure adjusting system. The squeegee blades are easily replaceable without the use of tools. Quick and easy squeegee coupling through the two large knobs; the squeegee is released without any damage in the event of accidental impact.

Easy and intuitive controls. The outflow of the cleaning solution is easily controlled using the mechanical lever placed on the control panel. Inspectable mesh filter to trap any existing solid body in the cleaning solution.



- 4.512.0068
Extension electric cord 15 m
with Schuko plug