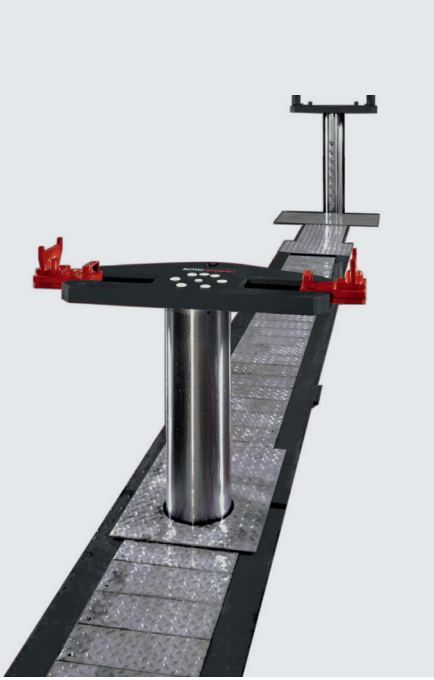


Multiflex 230, 300, 345 & 450

Electro-hydraulic 2- or 3-cylinder lift, 23, 30, 34.5 & 45 t capacity



Application

- Repair and maintenance

Description:

- Hard-chrome plated cylinders integrated in outer casing, which functions as a lubricating oil reservoir
- 25 t pump unit per cylinder
- External hard-chrome plated safety leg
- Remote control with emergency stop
- Sturdy lubricated stuffing box with double teflon band
- Galvanized steel roller shutters with a surface spot load of 1.5 t

Standard colours:

- Base plate: RAL 7016 - grey
- Adaptors: RAL 3020 - red

Versions:

- Available with different voltages
- 2 or 3 cylinders
- 1 or 2 movable cylinders
- Multiflex 230 & 300: with base plates and 4 pieces 100 mm and 2 pieces 285 mm adjustable adaptors
- Multiflex 345 & 450: with base plates and 6 pieces 100 mm and 2 pieces 285 mm adjustable adaptors

Optional extras:

- A large program of adjustable adaptors for different kinds of vehicles

Special colours available on request!



Scan the QR-Code for detailed product information.

Further Information on www.autopstenhoj.com

autop Maschinenbau GmbH

Sandkampstraße 90
D-48432 Rheine

+49 5971 8602-02

+49 5971 8602-25

info@autopstenhoj.com

STENHOJ A/S

Barrit Langgade 188-190
DK-7150 Barrit

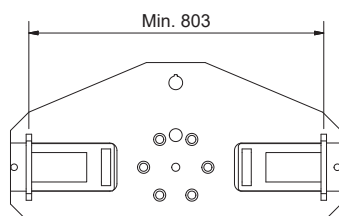
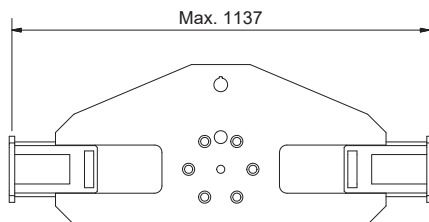
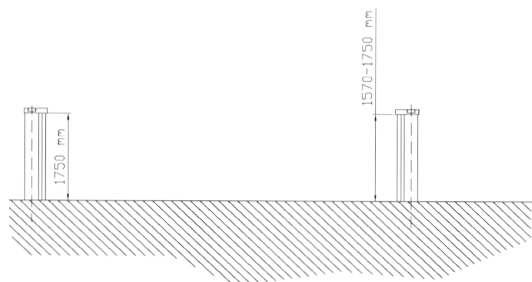
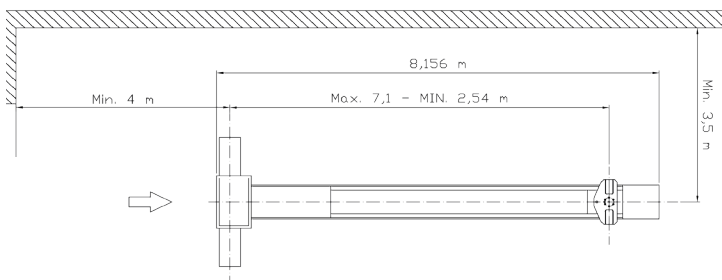
+45 76 82 13 30

+45 76 82 13 31

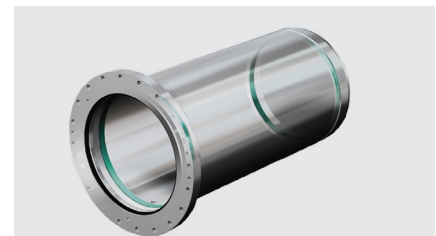
info@autopstenhoj.com

Technical data

Lifting capacity	23,000/30,000/34,500/45,000 kg
Stroke length	variable
Lifting height	1,750 mm
Lifting / lowering time	80/100 sec.
Pump unit	2 x 3 kW/3 x 3 kW
Operation	hydraulic
Voltage (depending on the model)	3 x 230/400V – 50 Hz – 35/25 A 3 x 230/400V – 50 Hz – 25/16 A 3 x 230/400V – 50 Hz – 45/35 A



Mutilflex remote



Sturdy stuffing box



Roller shutter system



Each cylinder is equipped with a safety leg