

TORQUE WRENCHES



1/4" dr. torque tools	160
3/8" dr. torque tools	161
1/2" dr. torque tools	161
3/4" dr. torque tools	162
1" dr. torque tools	163

TORQUE BARS



Torque bars, 9x12mm	164
Torque bars, 14x18mm	164
Torque screwdrivers 1/4"	164

DIGITAL TORQUE WRENCHES



Digital torque wrench - Nm/Degree	162
Digital torque wrench	162

PRE-TORQUE WRENCHES



Pre-torque wrenches	165
Pre-torque screwdrivers	165

5

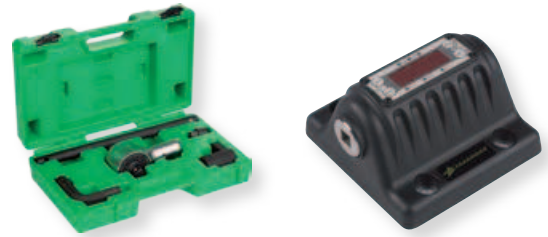


ACCESSORIES



Ratchet heads for torque bar	166
Open ends wrenches for torque bar	166
Ring ends wrenches for torque bar	166

TORQUE MULTIPLIERS AND TORQUE METER



Torque multiplier	164
Digital torque meter	167

TORQUE ANGLE INDICATORS



Torque angle indicator - 1/2"	167
Torque angle indicator - 3/4"	167





- PVC handles
- Additional micrometer scale for setting interim value
- Accuracy: +/- 3%
- DIN ISO 6789 and ASME B107.300-2010
- Calibration Certificate included



Locking button enables reliable locking of torque setting

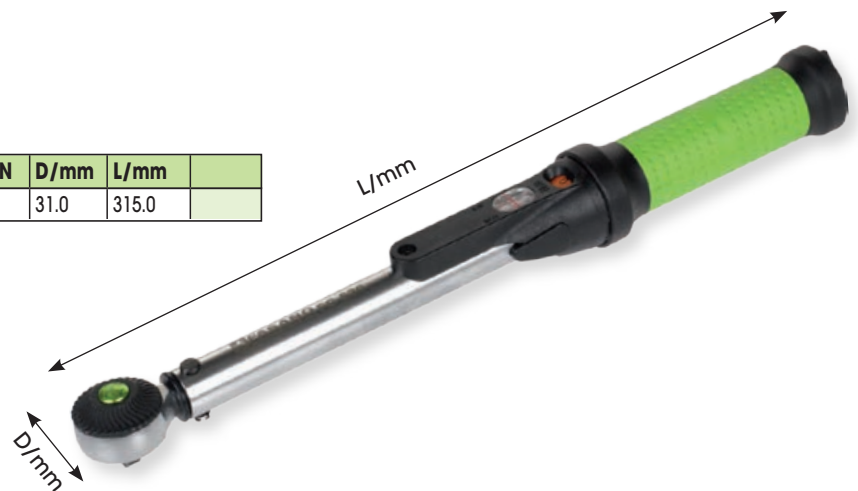


Easily readable dual scale Nm and Lbf-ft below window

1/4"dr. Torque wrench

CODE	■	Nm	RESOLUTION	D/mm	L/mm
FG 530	1/4"	2-25	0.1Nm	31.0	315.0

Accuracy: ± 3%

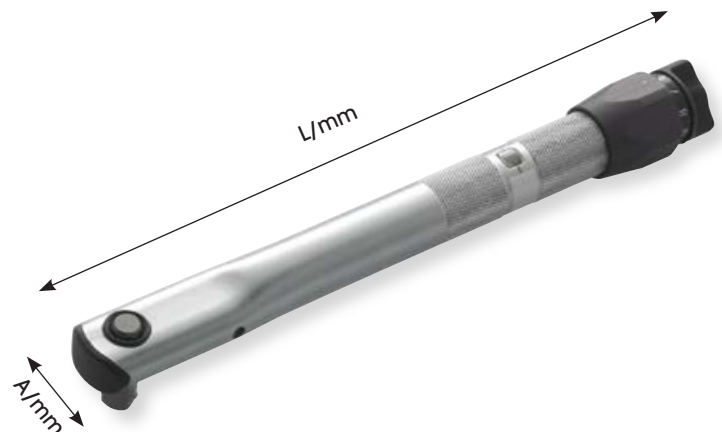


Torque wrench with 1/4"dr. interchangeable hexagon bit

CODE	■	Nm	A/mm	L/mm
FG 528	1/4"	1-5	30.0	230

Accuracy: ± 6%

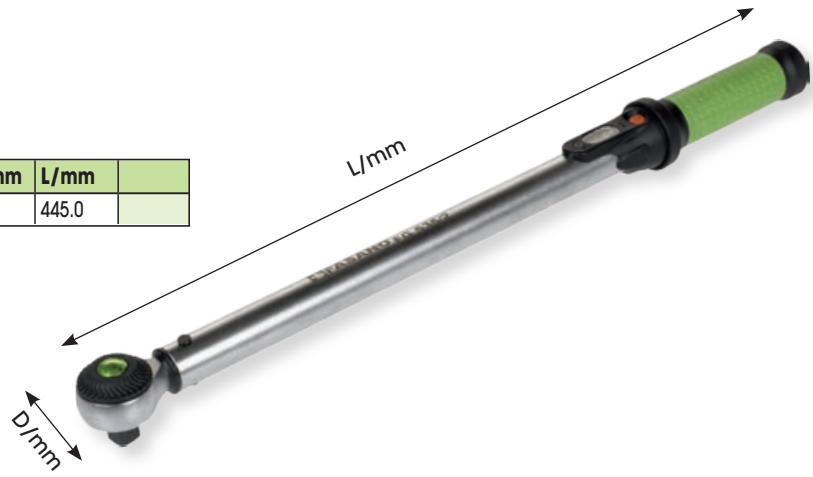
Supplied in ABS case and completed of accessories



3/8"dr. Torque wrench

CODE	■	Nm	RESOLUTION	D/mm	L/mm	
FG 532/1	3/8"	5-50Nm	0.25Nm	42.0	445.0	

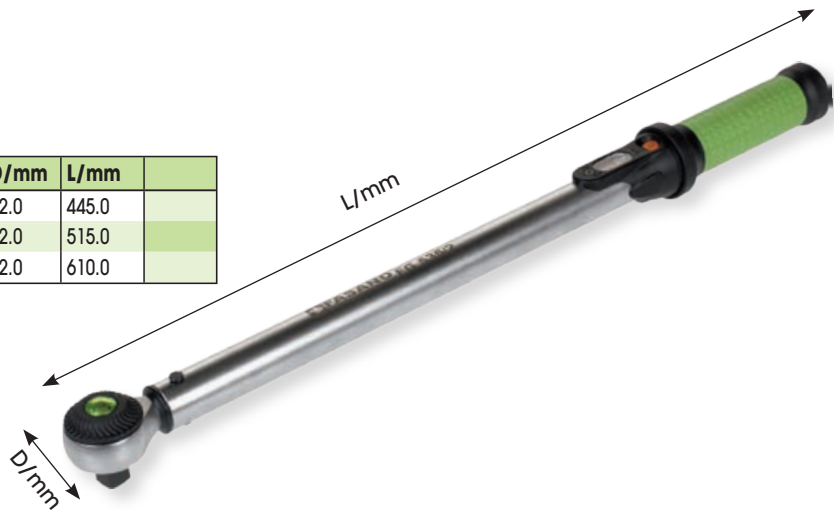
Accuracy: $\pm 3\%$



1/2"dr. Torque wrench

CODE	■	Nm	RESOLUTION	D/mm	L/mm	
FG 535/1	1/2"	10-100	0.5Nm	42.0	445.0	
FG 535/2	1/2"	20-200	1.0Nm	42.0	515.0	
FG 535/3	1/2"	60-300	1.0Nm	42.0	610.0	

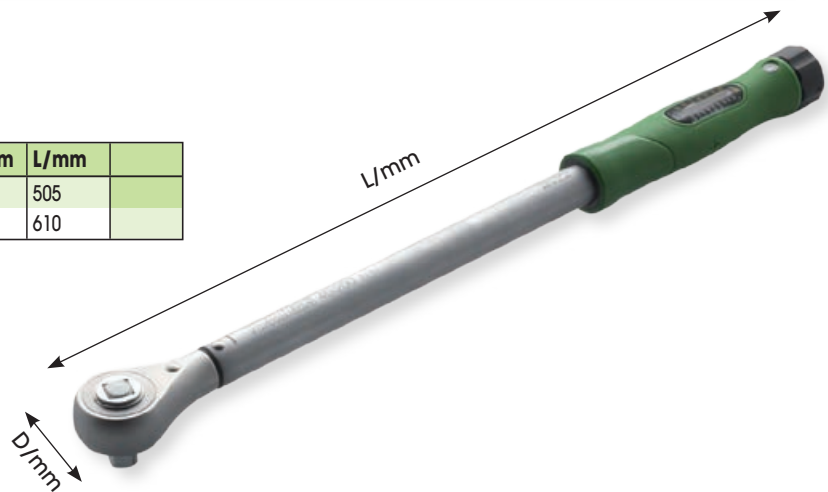
Accuracy: $\pm 3\%$



1/2"dr. Torque wrench

CODE	■	Nm	RESOLUTION	D/mm	L/mm	
FG 534/2	1/2"	40-200	1.0Nm	46.0	505	
FG 534/3	1/2"	60-300	1.0Nm	46.0	610	

Accuracy: $\pm 3\%$



1/2"dr. Torque wrench

CODE	■	Nm	RESOLUTION	D/mm	L/mm	
FG 535	1/2"	40-210	1.0Nm	36.0	490	

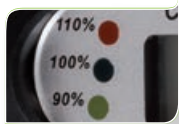
Accuracy: $\pm 4\%$



1/2"Dr. Digital torque wrench Nm-degree



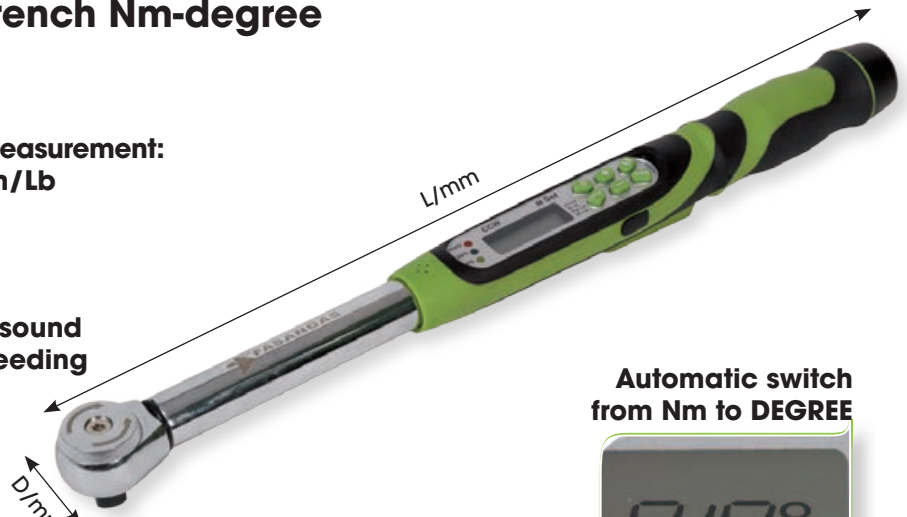
Choice of 4 units measurement:
Nm, Ft/Lb, Kg/cm, In/Lb



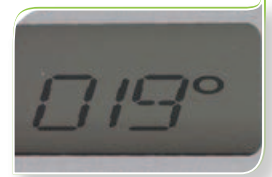
Indicator light and sound
achieving and exceeding
torque



USB drive for PC data.
Memory capacity up to 999
measurements



Automatic switch
from Nm to DEGREE



CODE	■	Nm	Degree	D/mm	L/mm
FG 540/DG	1/2"	10.3-200	0 - 360	36.5	450

Accuracy: ± 2%

1/2"Dr. Digital torque wrench

Accuracy: ± 2%



Digital display



CODE	■	Nm	A/mm	L/mm
FG 540	1/2"	2.3-203.4	36.5	450

3/4"Dr. Torque wrench supplied in ABS case

Accuracy: ± 3%

CODE	■	Nm	A/mm	L/mm
FG 537/1	3/4"	110-550	61.0	845
FG 537/2	3/4"	200-800	75.0	1.250



3/4"dr. torque bar supplied in ABS case

Accuracy: $\pm 4\%$

CODE	■	Nm	L/mm	
FG 538/1	3/4"	140-560	996	
FG 538/2	3/4"	200-800	1.070	



Supplied in ABS case

1"dr. torque bar supplied in ABS case

Accuracy: $\pm 4\%$

CODE	■	Nm	L/mm	
FG 539/1	1"	200-1000	1.400	



Supplied in ABS case

SPECIAL ALUMINUM SERIES

3/4" and 1"dr. Torque wrench

Accuracy: $\pm 3\%$

CODE	■	Nm	Weight	L/mm	
FG 537/AL1	3/4"	110-550	3.000gr	820	
FG 537/AL2	3/4"	140-760	3.000gr	820	
FG 537/AL3	3/4"	200-1.000	3.000gr	820	
FG 539/AL1	1"	600-1.500	10.900gr	1.615	
FG 539/AL2	1"	750-2.000	11.700gr	2.370	

Supplied in ABS case



Torque multiplier clockwise/anticlockwise



CODE	□ x ■	Ratio	Nm	lbf.ft	
FG 581/A	1/2" x 3/4"	1:6.5	231-1.500	1.106	
FG 581/B	1/2" x 1"	1:12	208-2.500	1.844	

9X12mm torque bar

Accuracy: ± 3%

CODE	■	Nm	L/mm	
FG 542/1	9x12mm	8-60	300	
FG 542/2	9x12mm	20-100	345	

14X18mm torque bar

Accuracy: ± 2%

CODE	■	Nm	L/mm	
FG 542/3	14x18mm	40-200	432	
FG 542/4	14x18mm	60-300	546	



Torque screwdriver with free adjustment

Accuracy: ± 6%

CODE	○	Nm	L/mm.	€/Pz
FG 559/1	1/4"	0.1 - 1.2	155	
FG 559/2	1/4"	1 - 6	155	
FG 559/3	1/4"	5 - 10	155	

NEW



ANTI-TAMPER SYSTEM

Torque wrenches endowed of anti-tamper system are suggested in industrial field and in particular way in production chain, where the accuracy of torque must to be 100% under control

A specific screw inside of handle guarantee that user can't freely adjust the torque of tool, because this operation is only possible screwing it and using a torque tester.

Anti-tamper products are supplied with plastic taps in different colour: each of them can represents a specific torque level to be used.



9X12mm torque bar with anti-tamper system

Accuracy: $\pm 3\%$

CODE	■	Nm	L/mm	
FG 551/1	9x12mm	1-20	203	



14X18mm torque bar with anti-tamper system

Accuracy: $\pm 3\%$

Break angle of 20° limited

CODE	■	Nm	L/mm	
FG 553/1	9x12mm	5-25	240	



Torque bar with anti-tamper system

Accuracy: $\pm 3\%$

CODE	■	Nm	L/mm	
FG 552/1	9x12mm	8-60	280	
FG 552/2	9x12mm	10-100	319	

CODE	■	Nm	L/mm	
FG 552/3	14x18mm	40-200	400	



Torque screwdriver with anti-tamper system

Accuracy: $\pm 6\%$

CODE	■	Nm	L/mm	
FG 558/2	1/4"	1-6	195	



Ratchet heads for torque bars

CODE	DRIVE	■	
FG 545/1	9x12mm	1/4"	
FG 545/2	9X12mm	3/8"	
FG 545/3	9x12mm	1/2"	
FG 545/4	14x18mm	1/2"	



Open ends for torque bars - 9x12mm

CODE	DRIVE	■	
FG 546/A7	9x12mm	7	
FG 546/A8	9X12mm	8	
FG 546/A10	9x12mm	10	
FG 546/A12	9X12mm	12	
FG 546/A13	9X12mm	13	
FG 546/A14	9X12mm	14	
FG 546/A17	9X12mm	17	
FG 546/A19	9X12mm	19	



Open ends for torque bars - 14x18mm

CODE	DRIVE	■	
FG 547/A13	14x18mm	13	
FG 547/A14	14x18mm	14	
FG 547/A17	14x18mm	17	
FG 547/A19	14x18mm	19	
FG 547/A22	14x18mm	22	
FG 547/A24	14x18mm	24	



Ring ends for torque bars - 9x12mm

CODE	DRIVE	■	
FG 548/A7	9x12mm	7	
FG 548/A8	9X12mm	8	
FG 548/A10	9x12mm	10	
FG 548/A12	9X12mm	12	
FG 548/A13	9X12mm	13	
FG 548/A14	9X12mm	14	
FG 548/A17	9X12mm	17	
FG 548/A19	9X12mm	19	



Ring ends for torque bars - 14x18mm

CODE	DRIVE	■	
FG 549/A13	14x18mm	13	
FG 549/A14	14x18mm	14	
FG 549/A17	14x18mm	17	
FG 549/A19	14x18mm	19	
FG 549/A22	14x18mm	22	
FG 549/A24	14x18mm	24	



Torque angle indicator

CODE	Drive	∅ mm	L/mm	
FG 560/A	1/2"	63	410	
FG 561	3/4"	83	610	



Torque angle indicator

CODE	Drive	∅ mm	L/mm	
FG 560	1/2"	63	410	



Torque angle indicator

CODE	Drive	
FG 562	1/2"	



Electronic digital torque meter for checking calibration to be used either clockwise or anticlockwise

Accuracy: ±1%
Display: 4 digit

CODE	■	Nm	
FG 579	1/4"	1-20	
FG 580	1/2"	20-400	

