

TOOL BOXES



Tool boxes - FG 102 model

372

Tool boxes - FG 103 model

374

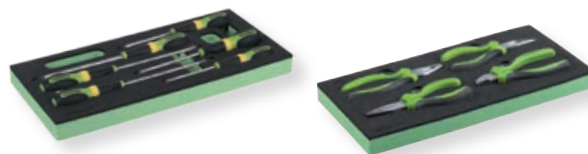
Tool boxes - FG 150 model

384

Tool boxes - FG 104 model

376

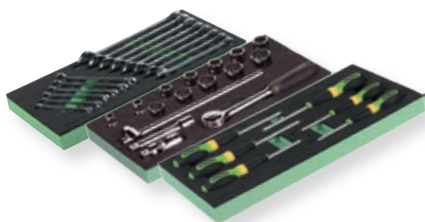
INDIVIDUAL FORMS OF TOOLS



Forms of tools

390

ASSORTMENTS FOR TOOL BOXES



Assortments

410

WORK STATION



Work station - FG 107 model

409



WORKBENCHES



Workbenches

440

Workbenches with drawers

443

Panels

451

SPECIAL WORKBENCHES



Special workbenches for liquids

452

CABINETS



Cabinets

450

TOOL CARRYING TROLLEY



Tool carrying trolley with 3 shelves

456





INTERNAL MAT



0125 WHEEL



STAINLESS STEEL HANDLE



FG 102D/...



FG 102B/...



FG 102R/...



FG 102V/...



CODE	Number drawers
FG 102V/8G, FG 102R/8G, FG 102D/8G, FG 102B/8G	8
FG 102V/7G, FG 102R/7G, FG 102D/7G, FG 102B/7G	7
FG 102V/6G, FG 102R/6G, FG 102D/6G, FG 102B/6G	6
FG 102V/5G, FG 102R/5G, FG 102D/5G, FG 102B/5G	5

NEW

FG 102/AR: Anti-tilt system (under requirement)



RUBBER TOP VERSION

CODE	Number drawers
FG 102V/8T, FG 102R/8T, FG 102D/8T, FG 102B/8T	8
FG 102V/7T, FG 102R/7T, FG 102D/7T, FG 102B/7T	7
FG 102V/6T, FG 102R/6T, FG 102D/6T, FG 102B/6T	6
FG 102V/5T, FG 102R/5T, FG 102D/5T, FG 102B/5T	5

NEW

FG 102/AR: Anti-tilt system (under requirement)



ABS TOP VERSION

CODE	Number drawers
FG 102V/8L, FG 102R/8L, FG 102D/8L, FG 102B/8L	8
FG 102V/7L, FG 102R/7L, FG 102D/7L, FG 102B/7L	7
FG 102V/6L, FG 102R/6L, FG 102D/6L, FG 102B/6L	6
FG 102V/5L, FG 102R/5L, FG 102D/5L, FG 102B/5L	5

NEW

FG 102/AR: Anti-tilt system (under requirement)



WOODEN TOP VERSION

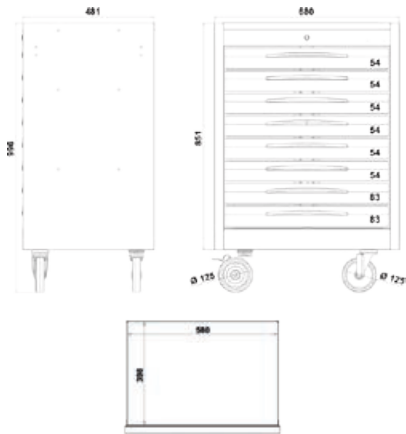
CODE	Number drawers
FG 102V/8A, FG 102R/8A, FG 102D/8A, FG 102B/8A	8
FG 102V/7A, FG 102R/7A, FG 102D/7A, FG 102B/7A	7
FG 102V/6A, FG 102R/6A, FG 102D/6A, FG 102B/6A	6
FG 102V/5A, FG 102R/5A, FG 102D/5A, FG 102B/5A	5

NEW

FG 102/AR: Anti-tilt system (under requirement)



STAINLESS STEEL TOP VERSION



Tool boxes with 8 drawers - mod. FG 102

TECHNICAL FEATURES:

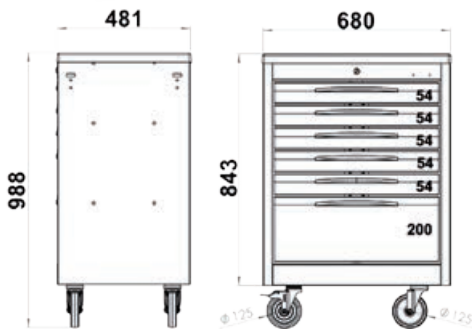
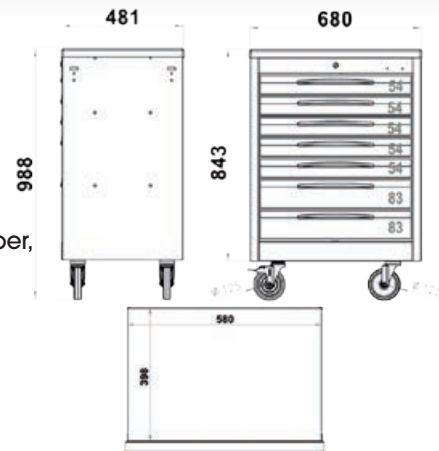
- Ball bearing slidings with telescopic system
- 4pcs wheel in no-marking rubber, Ø125mm (2 fixed and 2 swivel)
- stainless steel side handle
- central closing system
- drawers equipped with internal rubber mat



Tool boxes with 7 drawers - mod. FG 102

TECHNICAL FEATURES:

- Ball bearing slidings with telescopic system
- 4pcs wheel in no-marking rubber, Ø125mm (2 fixed and 2 swivel)
- stainless steel side handle
- central closing system
- drawers equipped with internal rubber mat



Tool boxes with 6 drawers - mod. FG 102

TECHNICAL FEATURES:

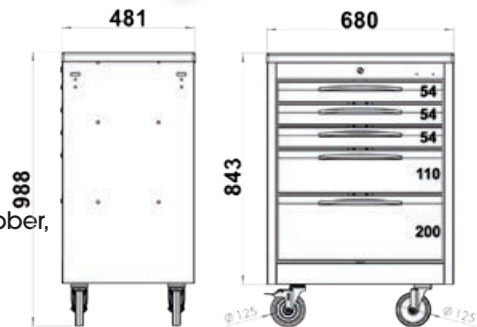
- Ball bearing slidings with telescopic system
- 4pcs wheel in no-marking rubber, Ø125mm (2 fixed and 2 swivel)
- stainless steel side handle
- central closing system
- drawers equipped with internal rubber mat



Tool boxes with 5 drawers - mod. FG 102

TECHNICAL FEATURES:

- Ball bearing slidings with telescopic system
- 4pcs wheel in no-marking rubber, Ø125mm (2 fixed and 2 swivel)
- stainless steel side handle
- central closing system
- drawers equipped with internal rubber mat





**Tool box
- model FG 103**

*Simply
Line*



**INTERNAL
RUBBER MAT**



SIDE STEEL HANDLE



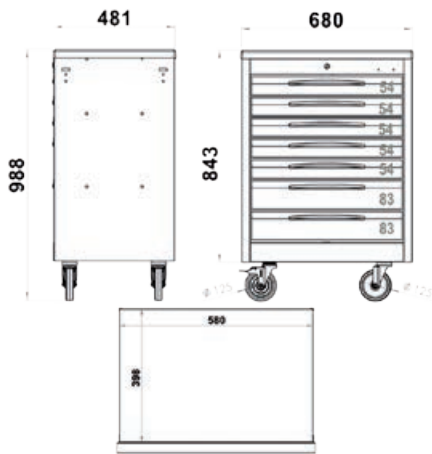
**Ø125 WHEELS
- 2 WITH BRAKE**

CODE	Number drawers
FG 103D/7G	7
FG 103D/6G	6
FG 103D/5G	5



RUBBER TOP VERSION

FG 103



Tool boxes with 7 drawers - mod. FG 103

TECHNICAL FEATURES:

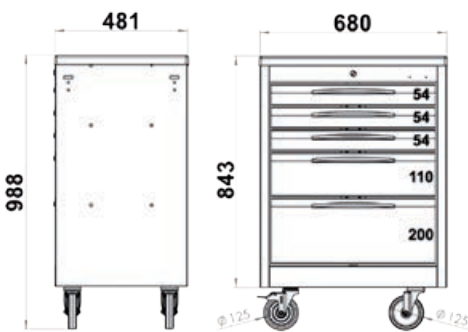
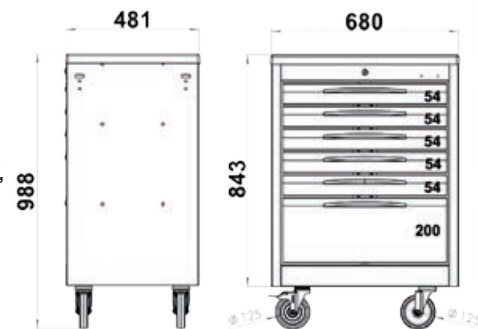
- Ball bearing slidings with telescopic system
- 4pcs wheel in no-marking rubber, Ø125mm (2 fixed and 2 swivel)
- stainless steel side handle
- central closing system
- drawers equipped with internal rubber mat



Tool boxes with 6 drawers - mod. FG 103

TECHNICAL FEATURES:

- Ball bearing slidings with telescopic system
- 4pcs wheel in no-marking rubber, Ø125mm (2 fixed and 2 swivel)
- stainless steel side handle
- central closing system
- drawers equipped with internal rubber mat



Tool boxes with 5 drawers - mod. FG 103

TECHNICAL FEATURES:

- Ball bearing slidings with telescopic system
- 4pcs wheel in no-marking rubber, Ø125mm (2 fixed and 2 swivel)
- stainless steel side handle
- central closing system
- drawers equipped with internal rubber mat



Portable tool chest with 6 drawers

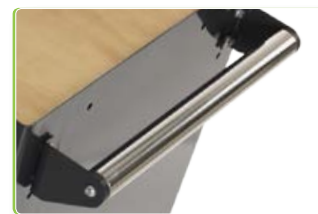
TECHNICAL FEATURES:

- Top shelf with GAS pistons 650x300x65mm
- 03 drawers 268x165x35mm
- 03 drawers 560x270x35mm
- centralized front lock
- side handles for transport

CODE	
FG 110	

NEW





STAINLESS STEEL HANDLE



CENTRAL CLOSING



FG 104D/...



FG 104B/...



FG 104R/...

NEW

FASANO
TOOLS



RUBBER TOP VERSION



WOODEN TOP VERSION

CODE	Number drawers
FG 104D/7G, FG 104B/7G, FG 104R/7G	7
FG 104D/6G, FG 104B/6G, FG 104R/6G	6

FG 104/AR: Anti-tilt system (under requirement)

CODE	Number drawers
FG 104D/7L, FG 104B/7L, FG 104R/7L	7
FG 104D/6L, FG 104B/6L, FG 104R/6L	6

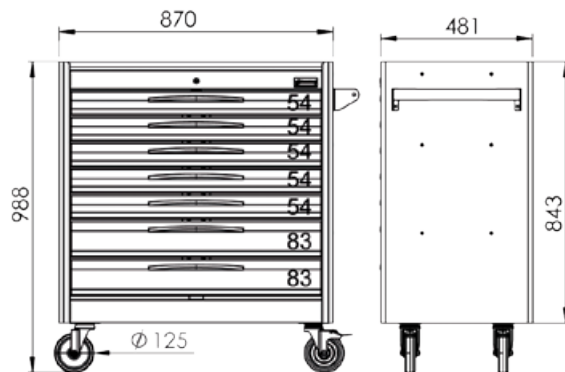
FG 104/AR: Anti-tilt system (under requirement)

Tool boxes with 7 drawers - mod. FG 104



TECHNICAL FEATURES:

- Ball bearing slidings with telescopic system
- 4pcs wheel in no-marking rubber, Ø125mm (2 fixed & 2 swivel)
- stainless steel side handle
- central closing system
- drawers equipped with internal rubber mat

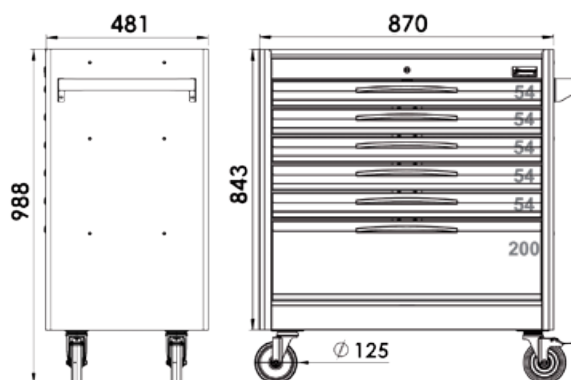


Tool boxes with 6 drawers - mod. FG 104



TECHNICAL FEATURES:

- Ball bearing slidings with telescopic system
- 4pcs wheel in no-marking rubber, Ø125mm (2 fixed & 2 swivel)
- stainless steel side handle
- central closing system
- drawers equipped with internal rubber mat





NEW

Tool box equipped with side cabinet

CODE	Number drawers
FG 105D/5G, FG 105B/5G, FG 105R/5G, FG 105V/5G	5

KG 83

Tool box equipped with side cabinet

CODE	Number drawers
FG 105D/6G, FG 105B/6G, FG 105R/6G, FG 105V/6G	6

KG 86

Tool box equipped with side cabinet

CODE	Number drawers
FG 105D/7G, FG 105B/7G, FG 105R/7G, FG 105V/7G	7

KG 89



90° opening, equipped with key lock



Internal shelves removable and adjustable



Rubber Top

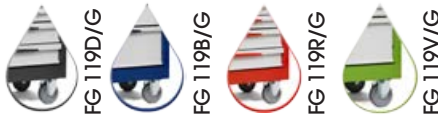
FG 105 XL



Side cabinet for tool box model FG 102 - Rubber TOP

NEW

CODE	
FG 119D/G, FG 119B/G, FG 119R/G, FG 119V/G	



EXTEND YOUR FG 102



NEW

Tool box equipped with side cabinet

CODE	Number drawers
FG 105D/5L, FG 105B/5L, FG 105R/5L, FG 105V/5L	5

Tool box equipped with side cabinet

CODE	Number drawers
FG 105D/6L, FG 105B/6L, FG 105R/6L, FG 105V/6L	6

Tool box equipped with side cabinet

CODE	Number drawers
FG 105D/7L, FG 105B/7L, FG 105R/7L, FG 105V/7L	7



90° opening, equipped with key lock



Internal shelves removable and adjustable



Wooden top

FG 105 XL



Side cabinet for tool box model FG 102 - Wooden TOP

NEW

CODE	
FG 119D/L, FG 119B/L, FG 119R/L, FG 119V/L	



FG 119D/L



FG 119B/L



FG 119R/L



FG 119V/L



EXTEND YOUR FG 102



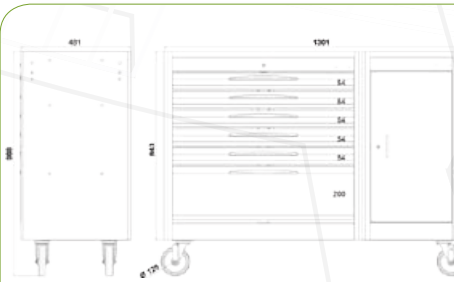
NEW



Rubber top



Internal shelves removable and adjustable



Tool box equipped with side cabinet

CODE	Number drawers
FG 109D/6G, FG 109B/6G, FG 109R/6G	6



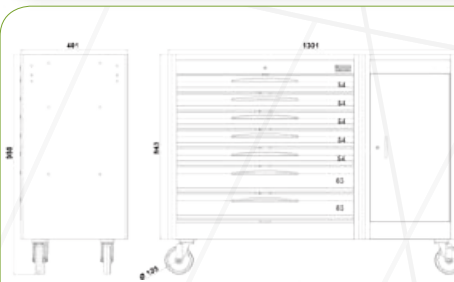
FG 109D/6G



FG 109B/6G



FG 109R/6G



Tool box equipped with side cabinet

CODE	Number drawers
FG 109D/7G, FG 109B/7G, FG 109R/7G	7



FG 109D/7G



FG 109B/7G



FG 109R/7G

Side cabinet for tool box model FG 104 - Rubber TOP



FG 119D/G



FG 119B/G



FG 119R/G

CODE
FG 119D/G, FG 119B/G, FG 119R/G

EXTEND YOUR FG 104



TOOL BOXES



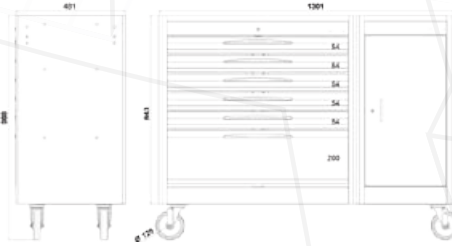
NEW



Wooden top

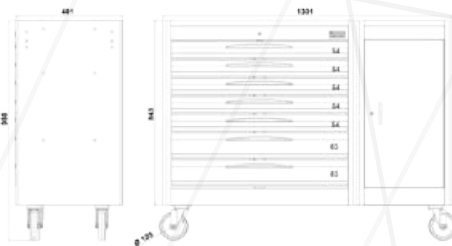


Internal shelves removable and adjustable



Tool box equipped with side cabinet

CODE	Number drawers
FG 109D/6L, FG 109B/6L, FG 109R/6L	6



Tool box equipped with side cabinet

CODE	Number drawers
FG 109D/7L, FG 109B/7L, FG 109R/7L	7



Side cabinet for tool box model FG 104 - Wooden TOP



CODE
FG 119D/L, FG 119B/L, FG 119R/L

EXTEND YOUR FG 104





RUBBER INTERNAL MAT



Ø125 WHEELS



STAINLESS STEEL HANDLE



FG 150D/...



FG 150R/...



FG 150V/...

CODE	Number drawers	
FG 150V/7G, FG 150R/7G, FG 150D/7G, FG 150B/7G	7	
FG 150V/6G, FG 150R/6G, FG 150D/6G, FG 150B/6G	6	
FG 150V/5G, FG 150R/5G, FG 150D/5G, FG 150B/5G	5	

FG 150/AR: Anti-filt system (under requirement)



RUBBER TOP VERSION

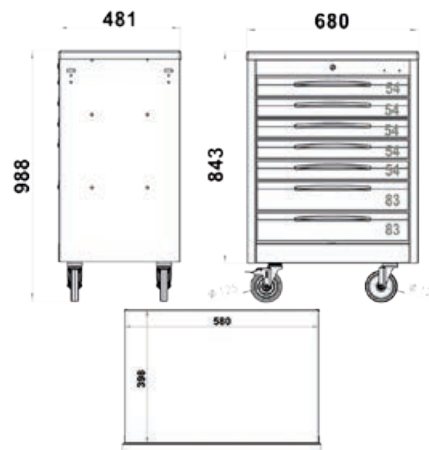




Tool boxes with 7 drawers - mod. FG 150

TECHNICAL FEATURES:

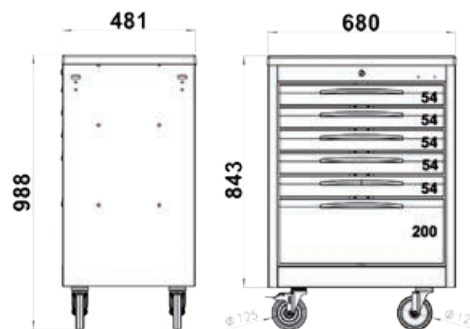
- Ball bearing slidings with telescopic system
- 4pcs wheel in no-marking rubber, Ø125mm (2 fixed and 2 swivel)
- stainless steel side handle
- central closing system
- drawers equipped with internal rubber mat



Tool boxes with 6 drawers - mod. FG 150

TECHNICAL FEATURES:

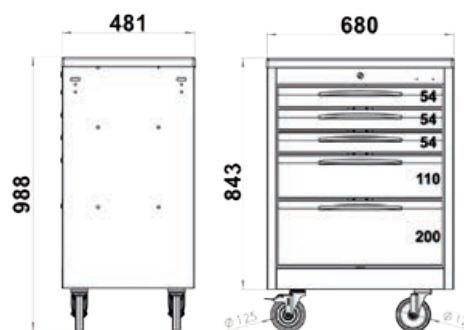
- Ball bearing slidings with telescopic system
- 4pcs wheel in no-marking rubber, Ø125mm (2 fixed and 2 swivel)
- stainless steel side handle
- central closing system
- drawers equipped with internal rubber mat



Tool boxes with 5 drawers - mod. FG 150

TECHNICAL FEATURES:

- Ball bearing slidings with telescopic system
- 4pcs wheel in no-marking rubber, Ø125mm (2 fixed and 2 swivel)
- stainless steel side handle
- central closing system
- drawers equipped with internal rubber mat





NEW

JUMBO

CODE	Number drawers
FG 160V/14L	14



WOODEN TOP





PAPER HOLDER

CODE	FOR:	
FG 102/PR	FG 102,FG 103,FG 104,FG 160	



PAPER HOLDER

CODE	FOR:	
FG 150/PR	FG 150	



CAN HOLDER

CODE	FOR:	
FG 102/PL	FG 102 and FG 104	

CAN HOLDER

CODE	FOR:	
FG 103/PL	FG 103	



CAN HOLDER

CODE	FOR:	
FG 150/PL	FG 150	



WORKING SHELF FOR PC

CODE	FOR:	
FG 102/PC	FG 102,FG 103,FG 104	



SUPPORT FOR WINDSHIELD

CODE	FOR:	
FG 102/SP	FG 102	





RUBBER TOP FOR FG 102

CODE	FOR:	
FG 102/TG	FG 102	
FG 104/TG	FG 104	



ABS TOP - 3mm depth

CODE	FOR:	
FG 102/RTG	FG 102	



STAINLESS STEEL TOP FOR 102, 1mm depth

CODE	FOR:	
FG 102/TA	FG 102	



WOODEN OILPROOF TOP FOR FG 102 and FG 104

CODE	FOR:	
FG 102/TL	FG 102	
FG 104/TL	FG 104	



MAGNETIC TOOL HOLDER, RECTANGULAR

CODE	L/mm	
FG 94/R	165x245	



MAGNETIC TOOL HOLDER, ROUND

CODE	Ø/mm	
FG 94/T	150	





Form of 13pcs UNIVERSAL combination wrenches

CODE	Pz	CONTENT	
FG 100/01B	13	8, 10, 11, 12, 13, 14, 15, 16, 17, 18, 19, 20, 21 mm	

CODE	DIMENSION	
FG TER 100/01B	398x378x32mm	



Form of 12pcs UNIVERSAL combination wrenches - Twister series

CODE	Pz	CONTENT	
FG 100/02B	12	8, 9, 10, 11, 12, 13, 14, 15, 16, 17, 18, 19 mm	

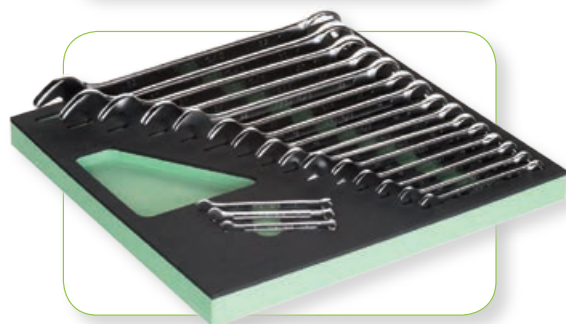
CODE	DIMENSION	
FG TER 100/02B	398x378x32mm	



Form of 14pcs combination wrenches

CODE	Pz	CONTENT	
FG 100/03G	14	6, 7, 8, 9, 10, 11, 12, 13, 14, 15, 16, 17, 18, 19 mm	

CODE	DIMENSION	
FG TER 100/03G	398x189x32mm	



Form of 18pcs combination wrenches - simply series

CODE	Pz	CONTENT	
FG 100/03H	18	6, 7, 8, 10, 11, 12, 13, 14, 16, 17, 18, 19, 21, 22, 24, 27, 30, 32 mm	

CODE	DIMENSION	
FG TER 100/03H	398x378x32mm	



Form of 9pcs combination wrenches - inch series

CODE	Pz	CONTENT	
FG 100/03IN	9	1/4", 5/16", 3/8", 7/16", 1/2", 9/16", 5/8", 11/16", 3/4"	

CODE	DIMENSION	
FG TER 100/03IN	398x189x32mm	





Form of 8pcs double open end wrenches

CODE	Pz	CONTENT	
FG 100/03E	8	6x7, 8x9, 10x11, 12x13, 14x15, 16x17, 18x19, 20x22 mm FG 139C/FS	

CODE	DIMENSION	
FG TER 100/03E	398x189x32mm	



Form of 5pcs double open end wrenches

CODE	Pz	CONTENT	
FG 100/03F	5	21x23, 24x26, 25x28, 27x29, 30x32 mm	

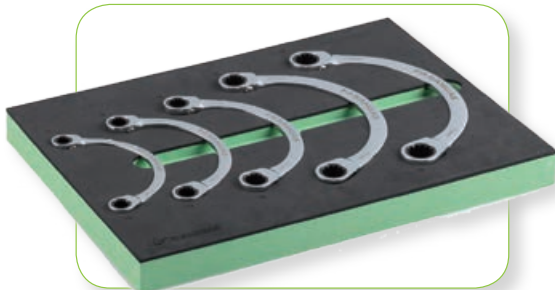
CODE	DIMENSION	
FG TER 100/03F	398x189x32mm	



Form of 4pcs TX double end wrenches

CODE	Pz	CONTENT	
FG 100/03TX	4	E6xE8, E10xE12, E14xE18, E20xE24	

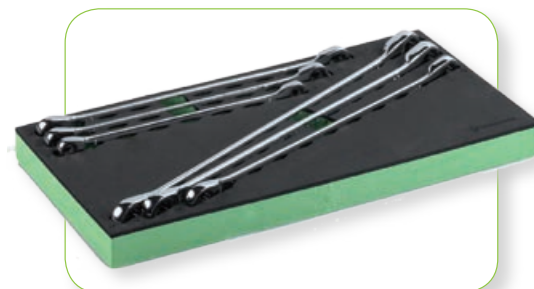
CODE	DIMENSION	
FG TER 100/03TX	199x189x32	



Form of 5pcs gear wrenches - MOON series

CODE	Pz	CONTENT	
FG 100/05C	5	10x11, 12x13, 14x15, 16x17, 18x19 mm	

CODE	DIMENSION	
FG TER 100/05C	398x283x32mm	



Form of 6pcs gear wrenches - extra-long series

CODE	Pz	CONTENT	
FG 100/06B	6	8x9, 10x11, 12x13, 14x15, 16x18, 17x18 mm	

CODE	DIMENSION	
FG TER 100/06B	398x189x32mm	

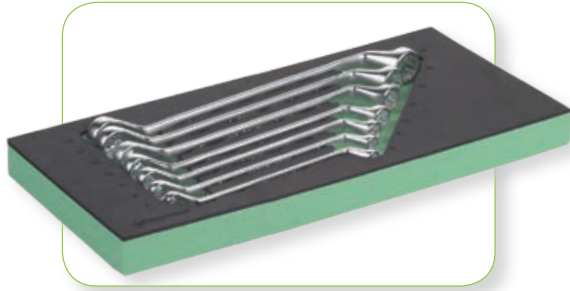


Form with 6pcs double ended 75° offset ring gear wrenches

CODE	Pz	CONTENT	
FG 100/07B	6	8x9, 10x11, 12x13, 14x15, 16x18, 17x19mm	

CODE	DIMENSION	
FG TER 100/07B	398x189x32mm	

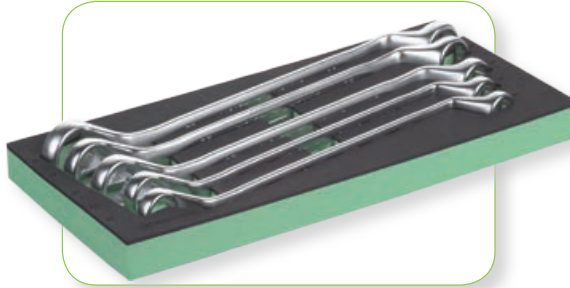




Form with 7pcs double ended 75° offset ring wrenches

CODE	Pz	CONTENT	
FG 100/07C	7	6x7, 8x9, 10x11, 12x13, 14x15, 16x17, 18x19mm	

CODE	DIMENSION	
FG TER 100/07C	398x189x32mm	



Form with 5pcs double ended 75° offset ring wrenches

CODE	Pz	CONTENT	
FG 100/07D	5	20x22, 21x23, 24x27, 25x28, 30x32mm	

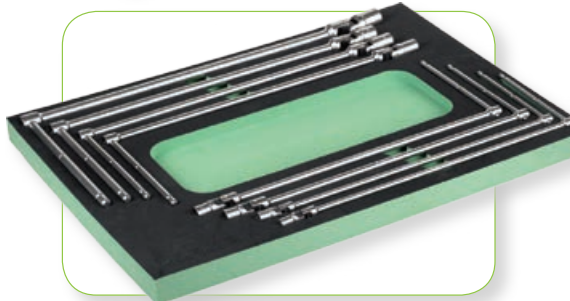
CODE	DIMENSION	
FG TER 100/07D	398x189x32mm	



Form with 11pcs reversible gear wrenches

CODE	Pz	CONTENT	
FG 100/08B	11	8, 10, 11, 12, 13, 14, 15, 16, 17, 18, 19mm	

CODE	DIMENSION	
FG TER 100/08B	398x189x32mm	



Form of 8pcs hex T-Handle wrenches

CODE	Pz	CONTENT	
FG 100/10C	7	8, 10, 11, 13, 14, 17, 19 mm	

CODE	DIMENSION	
FG TER 100/10C	566x398x32mm	



Form of 12pcs hex T-Handle wrenches

CODE	Pz	CONTENT	
FG 100/10D	7	8, 10, 11, 13, 14, 17, 19 mm	

CODE	DIMENSION	
FG TER 100/10D	566x398x32mm	

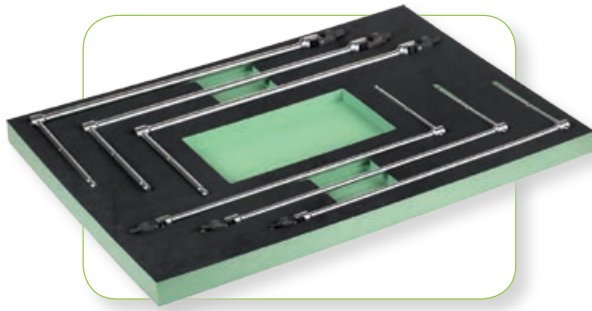


Form of 11pcs T-Handle fixed wrenches

CODE	Pz	CONTENT	
FG 100/11	8	8,10,11,13,14,15,17,19	

CODE	DIMENSION	
FG TER 100/11	398x378x32mm	

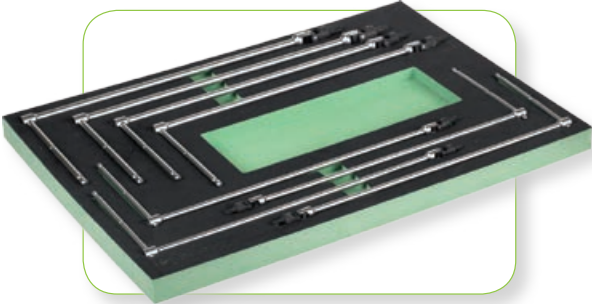




Form of 6pcs hex male T-Handle wrenches

CODE	Pz	CONTENT	
FG 100/10H	6	3, 4, 5, 6, 8, 10 mm	

CODE	DIMENSION		
FG TER 100/10H	566x398x32mm		



Form of 8pcs Torx male T-Handle wrenches

CODE	Pz	CONTENT	
FG 100/10TX	8	TX20, 25, 27, 30, 40, 45, 50, 55	

CODE	DIMENSION		
FG TER 100/10TX	566x398x32mm		



Form of 8pcs tube wrenches - strong series

CODE	Pz	CONTENT	
FG 100/12B	8	6x7, 8x9, 10x11, 12x13, 14x15, 16x17, 18x19, 20x22	

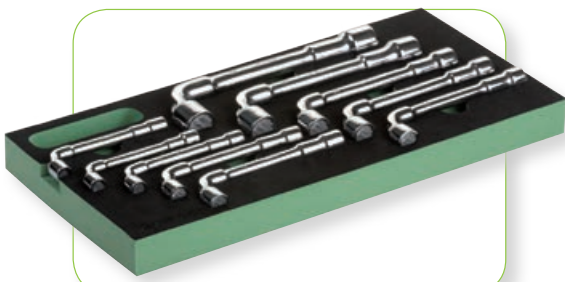
CODE	DIMENSION		
FG TER 100/12B	398x198x32mm		



Form of 8pcs tube wrenches - light series

CODE	Pz	CONTENT	
FG 100/12C	8	6x7, 8x9, 10x11, 12x13, 14x15, 16x17, 18x19, 20x22	

CODE	DIMENSION		
FG TER 100/12C	398x198x32mm		



Form of 10pcs pipe wrenches - 12PT series

CODE	Pz	CONTENT	
FG 100/13C	10	6, 7, 8, 10, 11, 12, 13, 14, 17, 19mm	

CODE	DIMENSION		
FG TER 100/13C	398x198x32mm		



Form of 17pcs pipe wrenches - 12PT series

CODE	Pz	CONTENT	
FG 100/13D	17	6, 7, 8, 9, 10, 11, 12, 13, 14, 15, 16, 17, 18, 19, 21, 22, 24mm	

CODE	DIMENSION		
FG TER 100/13D	398x378x32mm		



1/4"



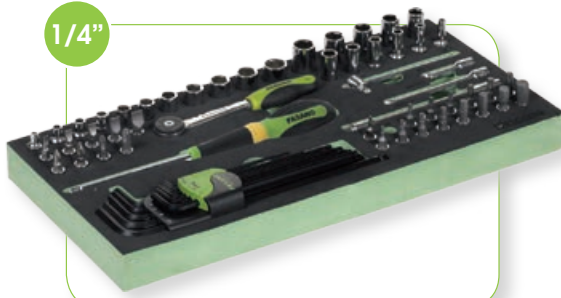
Form of 11pcs hexagonal 1/4"dr. sockets + accessories

CODE	CONTENT	
FG 100/17	4, 5, 6, 7, 8, 9, 10, 11, 12, 13, 14mm	
	PROLUNGHE 50, 100mm e 150mm flex	
	CRICCO 1/4" - 215mm	
	SNODO 1/4" - 38mm	
	QUADRO MASCHIO 1/4" - 115mm	
PORTA BUSSOLE 1/4"		

CODE	DIMENSION	
FG TER 100/17	398x198x32mm	



1/4"



Form of 65pcs 1/4"dr tools

CODE	CONTENT	
FG 100/17E	VEDI PAGINA 43	

CODE	DIMENSION	
FG TER 100/17E	398x198x32mm	



1/4"



Form of 12pcs hex 1/4"dr. sockets + accessories - inch series

CODE	CONTENT	
FG 100/17IN	5/32, 3/16, 7/32, 1/4, 9/32, 5/16, 11/32, 3/8, 7/16, 15/32, 1/2, 9/16	
	BARS 50, 100mm e 150mm flex	
	RATCHET 1/4" - 215mm	
	JOINT 1/4" - 38mm	
	SLIDING BAR 1/4" - 115mm	
	SOCKET HOLDER 1/4"	

CODE	DIMENSION	
FG TER 100/17IN	398x189x32mm	



3/8"



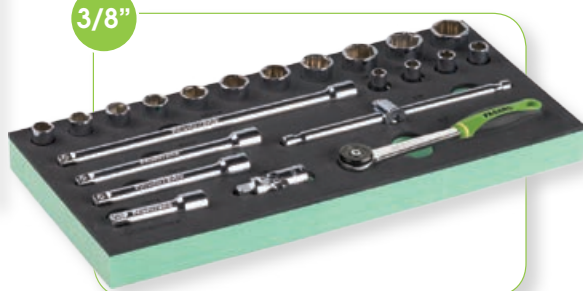
Form of 13pcs hexagonal 3/8"dr. sockets + accessories

CODE	CONTENT	
FG 100/18	8, 9, 10, 11, 12, 13, 14, 15, 16, 17, 18, 19, 21 mm	
	BARS 75, 125, 150, 250mm	
	RATCHET 3/8" - 28.5mm	
	JOINT 3/8" - 52mm	
	SLIDING BAR 3/8" - 220mm	

CODE	DIMENSION	
FG TER 100/18	398x189x32mm	



3/8"



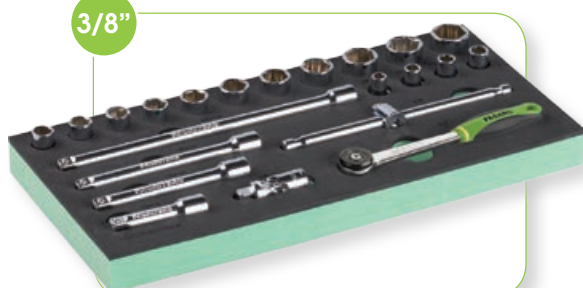
Form of 15pcs hexagonal 3/8"dr. sockets + accessories

CODE	CONTENT	
FG 100/19	8, 9, 10, 11, 12, 13, 14, 15, 16, 17, 18, 19, 21, 22, 23 mm	
	BARS 75, 125, 150, 250mm	
	RATCHET 3/8" - 28.5mm	
	JOINT 3/8" - 52mm	
	SLIDING BAR 3/8" - 220mm	

CODE	DIMENSION	
FG TER 100/19	398x189x32mm	



3/8"



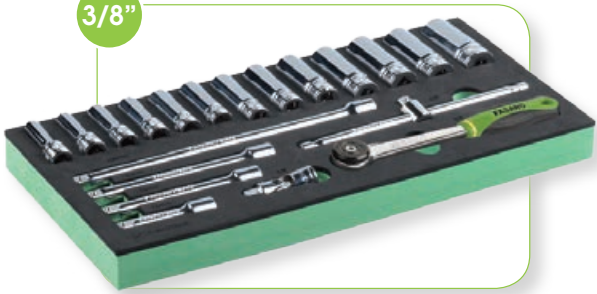
Form of 15pcs 12PT 3/8"dr. sockets + accessories - inch series

CODE	CONTENT	
FG 100/19IN	SOCKETS 1/4 - 15/16	
	PROLUNGHE 75, 125, 150, 250mm	
	CRICCO 3/8" - 28.5mm	
	SNODO 3/8" - 52mm	
	QUADRO MASCHIO 3/8" - 220mm	

CODE	DIMENSION	
FG TER 100/19IN	398x189x32mm	



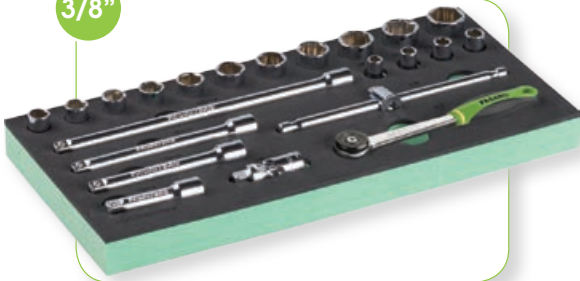
3/8"



Form of 13pcs 12PT 3/8"dr. sockets + accessories

CODE	CONTENT	
FG 100/18B	8, 9, 10, 11, 12, 13, 14, 15, 16, 17, 18, 19, 21 mm	
	BARS 75, 125, 150, 250mm	
	RATCHET 3/8" - 28.5mm	
	JOINT 3/8" - 52mm	
	SLIDING BAR 3/8" - 220mm	
CODE	DIMENSION	
FG TER 100/18B	398x189x32mm	

3/8"



Form of 15pcs 12PT 3/8"dr. sockets + accessories

CODE	CONTEÚDO	
FG 100/19B	6, 7, 8, 9, 10, 11, 12, 13, 14, 15, 16, 17, 18, 19, 21mm	170,00
	EXTENSÕES 75, 125, 150, 250mm	
	ROQUETE 3/8" - 28.5mm	
	CARDAM 3/8" - 52mm	
	CABO EM T 3/8" - 220mm	
CODE	DIMENSION	
FG TER 100/19B	398x189x32mm	

1/2"



Form of 18pcs unievrsale 1/2"dr. sockets + accessories

CODE	CONTENT	
FG 100/20B	8, 10, 11, 12, 13, 14, 15, 16, 17, 18, 19, 20, 21, 22, 24, 27, 30, 32 mm	
	BARS 125, 250mm	
	RATCHET 1/2" - 360mm	
	JOINT 1/2" - 76mm	
	SLIDING BAR 1/2" - 305mm	
CODE	DIMENSION	
FG TER 100/20B	398x189x32mm	

1/2"



Form of 20pcs hex 1/2"dr. sockets + accessories

CODE	CONTENT	
FG 100/21B	10, 11, 12, 13, 14, 15, 16, 17, 18, 19, 20, 21, 22, 23, 24, 25, 26, 27, 30, 32mm	
	BARS 125, 250mm	
	RATCHET 1/2" - 360mm	
	JOINT 1/2" - 76mm	
	SLIDING BAR 1/2" - 305mm	
CODE	DIMENSION	
FG TER 100/21B	398x189x32mm	

1/2"



Form of 20pcs 12PT 1/2"dr. sockets + accessories

CODE	CONTENT	
FG 100/21C	10, 11, 12, 13, 14, 15, 16, 17, 18, 19, 20, 21, 22, 23, 24, 25, 26, 27, 30, 32mm	
	BARS 125, 250mm	
	RATCHET 1/2" - 360mm	
	JOINT 1/2" - 76mm	
	SLIDING BAR 1/2" - 305mm	
CODE	DIMENSION	
FG TER 100/21C	398x189x32mm	

1/2"



Form of 12pcs 12PT 1/2"dr. sockets + accessories

CODE	CONTENT	
FG 100/21D	8, 10, 12, 13, 15, 17, 19, 21, 24, 27, 30, 32mm	
	BARS 125mm	
	RATCHET 1/2" - 360mm	
	JOINT 1/2" - 76mm	
	SLIDING BAR 1/2" - 305mm	
CODE	DIMENSION	
FG TER 100/21D	398x189x32mm	



1/4" 1/2"



Form of 1/2" and 1/4" dr. sockets + accessories

CODE	CONTENT	
FG 100/21E	SEE PAGE 75	
CODE	DIMENSION	
FG TER 100/21E	398x283x32mm	28,00



1/2"



Form of 1/2" dr. sockets + accessories

CODE	CONTENT	
FG 100/21F	SEE PAGE 75	
CODE	DIMENSION	
FG TER 100/21F	398x283x32mm	



1/2"



Form 20pcs 1/2" dr. hex INCH sockets + accessories

CODE	CONTENT	
FG 100/21IN	SOCKETS 5/16 - 1.1/4	
	EXTENSION BARS 125, 250mm	
	RATCHET HANDLE 1/2" - 360mm	
	UNIVERSAL JOINT 1/2" - 76mm	
	SLIDING BAR 1/2" - 305mm	
CODE	DIMENSION	
FG TER 100/21IN	398x189x32mm	



1/4" 1/2"



Form 20pcs 1/2" dr. and 1/4" dr. hex INCH sockets + accessories

CODE	CONTENT	
FG 100/21G	SOCKETS 1/4" - 3/8" .5/46" - 1.1/4"	
	EXTENSION BARS 50,75,100,125mm	
	RATCHET HANDLES 1/2" and 1/4"	
	JOINT 1/2" and 1/4"	
	SLIDING BARS 1/2" and 1/4"	
CODE	DIMENSION	
FG TER 100/21G	398x189x32mm	



1/2"



Form 32pcs 1/2" dr. hex sockets + accessories

CODE	CONTENT	
FG 100/21H	SHORT SOCKETS: 8-32mm	
	LONG SOCKETS: 10-32mm	
	EXTENSION BARS 125, 250mm	
	RATCHET HANDLE 1/2" - 360mm	
	JOINT 1/2" - 76mm	
	SLIDING BAR 1/2" - 305mm	
CODE	DIMENSION	
FG TER 100/21H	398x283x32mm	



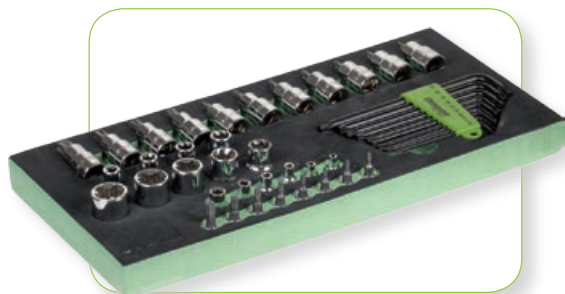
1/2"



Form 32pcs 1/2" dr. 12PT sockets + accessories

CODE	CONTENT	
FG 100/21L	SHORT SOCKETS: 8-32mm	
	LONG SOCKETS: 10-32mm	
	EXTENSION BARS 125, 250mm	
	RATCHET HANDLE 1/2" - 360mm	
	JOINT 1/2" - 76mm	
	SLIDING BAR 1/2" - 305mm	
CODE	DIMENSION	
FG TER 100/21L	398x283x32mm	





Form of 44pcs Torx tools

CODE	CONTENT
FG 100/21TX	1/4"dr. SOCKETS TX4 - TX10
	1/2"dr. SOCKETS 1/2" TX8 - TX24
	1/4"dr. SOCKET BITS 1/4" TX9 - TX40
	1/2"dr. SOCKET BITS 1/2" TX10 - TX60
	TORX ALLEN KEYS

CODE	DIMENSION	
FG TER 100/21TX	398x189x32mm	20,00



Form of 15pcs 3/8"dr. impact sockets

CODE	Pz	CONTENT
FG 100/23A	15	8,9,10, 11, 12, 13, 14, 15, 16, 17, 18, 19, 20, 21, 22mm

CODE	DIMENSION	
FG TER 100/23A	199X189x32mm	



Form of 19pcs 1/2"dr. deep impact sockets

CODE	Pz	CONTENT
FG 100/23B	19	10, 11, 12, 13, 14, 15, 16, 17, 18, 19, 21, 22, 23, 24, 25, 27, 29, 30, 32 mm

CODE	DIMENSION	
FG TER 100/23B	398x189x32mm	



Form of 20pcs 1/2"dr. impact sockets + accessories

CODE	Pz	CONTENT
FG 100/23C	20	10, 11, 12, 13, 14, 15, 16, 17, 18, 19, 20, 21, 22, 23, 24, 25, 26, 27, 30, 32mm

CODE	DIMENSION	
FG TER 100/23C	398x189x32mm	



Form of 5pcs 3/4"dr. hex socket wrenches + accessories

CODE	CONTENT
FG 100/25	Bussole 34, 36, 41, 46, 50mm
	Prolunga 3/4" - 200mm
	Cricco 3/4" - 500mm
	Snodo 3/4" - 105mm
	Quadro maschio 3/4" - 405mm

CODE	DIMENSION	
FG TER 100/25	398x189x32mm	



Form of 5pcs 3/4"dr. 12PT socket wrenches + accessories

CODE	CONTENT
FG 100/25B	Bussole 34, 36, 41, 46, 50mm
	Prolunga 3/4" - 200mm
	Cricco 3/4" - 500mm
	Snodo 3/4" - 105mm
	Quadro maschio 3/4" - 405mm

CODE	DIMENSION	
FG TER 100/25B	398x189x32mm	





Form of 3pcs SOFT-RUN pliers

CODE	Pz	CONTENT
FG 100/39C	3	FG 59SR/180, FG 61SR/160, FG 63SR/160

CODE	DIMENSION
FG TER 100/39	398x189x32mm



Form of 4pcs circlip pliers

CODE	CONTENT	CAPACITY
FG 100/41C	FG 51/140	8-25mm
	FG 52/140	8-25mm
	FG 53/140	8-25mm
	FG 54/140	8-25mm

CODE	DIMENSION
FG TER 100/41C	398x189x32mm



Form of 4pcs circlip pliers

CODE	CONTENT	CAPACITY
FG 100/42C	FG 51/180	19-60mm
	FG 52/180	19-60mm
	FG 53/180	19-60mm
	FG 54/180	19-60mm

CODE	DIMENSION
FG TER 100/42C	398x189x32mm



Form of 6pcs long pliers

CODE	CONTENT
FG 100/43B	FG 58SR/250
	FG 56/S3
	FG 57/S3

CODE	DIMENSION
FG TER 100/43B	566x398x32mm



Form of 40pcs 1/4"dr. bits + 1/4"dr. ratchet handle

CODE	CONTENT
FG 100/48B	FG 85/25F1, F2, F3, F4, F5, F6, F7
	FG 85/25PH0, PH1, PH2, PH3
	FG 85/25PZ1, Pz2, PZ3
	FG 85/H1.5, H2, H3, H4, H5, H6, H8, H10
	FG 85/25T10, T15, TT20, T25, T27, T30, T40
	FG 85/25TT10, TT15, TT20, TT25, TT27, TT30, TT40
	FG 85/25M4, M5, M6, M10

CODE	DIMENSION
FG TER 100/48B	199x189x32mm

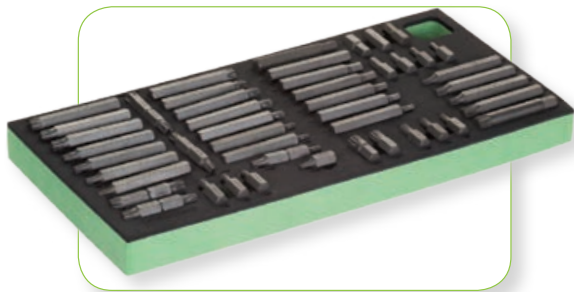


Form of 40pcs 1/4"dr. bits + 1/4"dr. bit holder

CODE	CONTENT
FG 100/48D	FG 85/25F1, F2, F3, F4, F5, F6, F7
	FG 85/25PH0, PH1, PH2, PH3
	FG 85/25PZ1, Pz2, PZ3
	FG 85/H1.5, H2, H3, H4, H5, H6, H8, H10
	FG 85/25T10, T15, TT20, T25, T27, T30, T40
	FG 85/25TT10, TT15, TT20, TT25, TT27, TT30, TT40
	FG 85/25M4, M5, M6, M10

CODE	DIMENSION
FG TER 100/48D	199x189x32mm

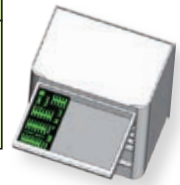




Form of 52pcs of bits with 10mm drive

CODE	CONTENT	
FG 100/48G	FG 86/30H4- H14, FG 86/75H4 - H14	
	FG 86/30T20 - T55, FG 86/75T20 -T55	
	FG 86/30/TT20 - TT55, FG 86/75TT20- TT55	
	FG 86/30M5 - M14, FG 86/75M5- M12	

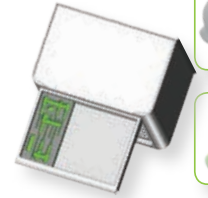
CODE	DIMENSION	
FG TER 100/48G	398x189x32mm	



Form of 6pcs slotted and PH screwdrivers

CODE	Pz	CONTENT	
FG 100/45D	6	3x100, 4x125, 5.5x150, 6.5x150 PH1x80, PH2x150	

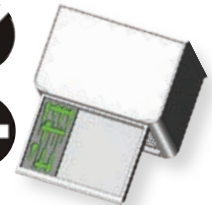
CODE	DIMENSION	
FG TER 100/45D	398x189x32mm	



Form of 8pcs slotted and PH screwdrivers

CODE	Pz	CONTENT	
FG 100/45E	8	3x100, 4x125, 5.5x150, 6.5x150, 6.5x38 PH1x80, PH2x150, PH2x38	

CODE	DIMENSION	
FG TER 100/45E	398x189x32mm	

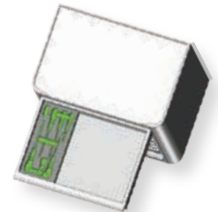


Form of 6pcs slotted and PH screwdrivers



CODE	Pz	CONTENT	
FG 100/45F	6	PH0x60, PH1x150, PH2x100, PH2x150, PH3x150, PH2x38	

CODE	DIMENSION	
FG TER 100/45F	398x189x32mm	

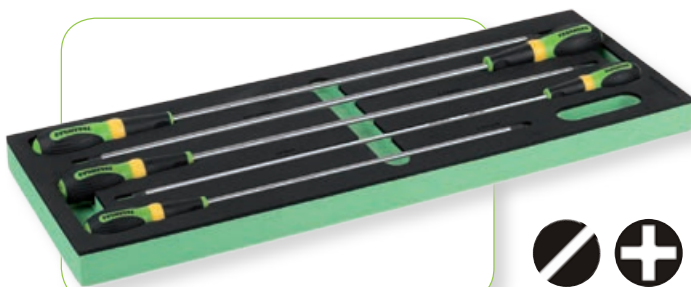
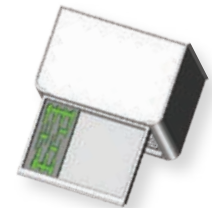


Form of 7pcs slotted screwdrivers



CODE	Pz	CONTENT	
FG 100/45G	7	2.5x60, 3x100, 3.5x100, 4x125 5.5x150, 5.5x100, 6.5x150	

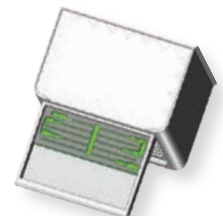
CODE	DIMENSION	
FG TER 100/45G	398x189x32mm	

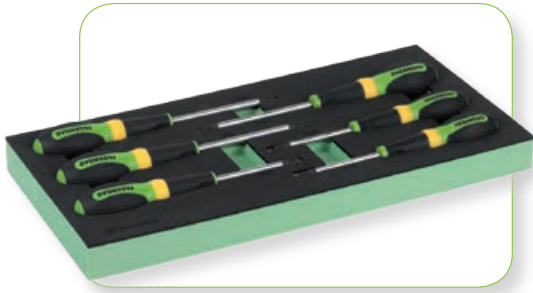


Form of 5pcs slotted and PH screwdrivers

CODE	Pz	CONTENT	
FG 100/45H	5	2.5x300, 4x400, 5.5x400 PH1x400, PH2x400	

CODE	DIMENSION	
FG 100/45H	199x398x32mm	

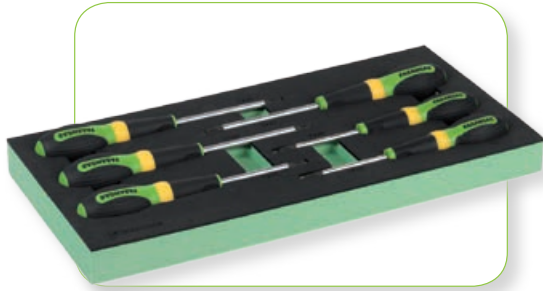
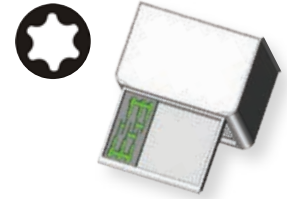




Form of 6pcs TX screwdrivers

CODE	Pz	CONTENT
FG 100/45I	6	TX10, TX15, TX20, TX25, TX27, TX30

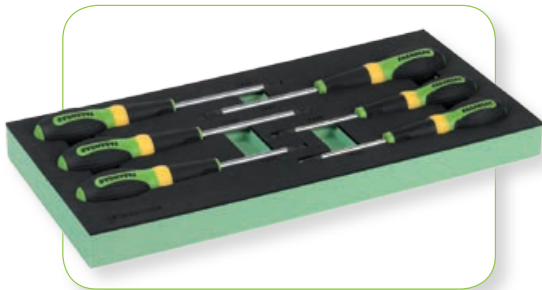
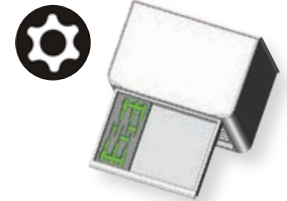
CODE	DIMENSION
FG TER 100/45I	398x189x32mm



Form of 6pcs TRX screwdrivers

CODE	Pz	CONTENT
FG 100/45L	6	RTX10, RTX15, RTX20, RTX25, RTX27, RTX30

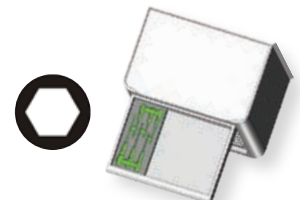
CODE	DIMENSION
FG TER 100/45L	398x189x32mm



Form of 6pcs hexagon screwdrivers

CODE	Pz	CONTENT
FG 100/45M	6	2.5, 3, 4, 5, 6, 8 mm

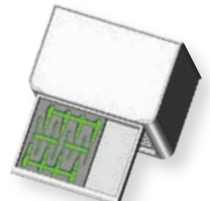
CODE	DIMENSION
FG TER 100/45M	398x189x32mm



Form of 8pcs nut spinners with handle

CODE	Pz	CONTENT
FG 100/45N	8	FL6, FL7, FL8, FL10 mm FX6, FX7, FX8, FX10 mm

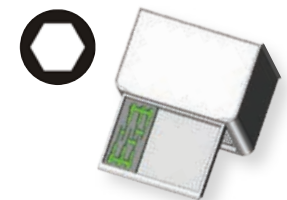
CODE	DIMENSION
FG TER 100/45N	398x189x32mm



Form of 6pcs nut spinners with handle

CODE	Pz	CONTENT
FG 100/45T	6	FX6, FX7, FX8, FX10, FX13

CODE	DIMENSION
FG TER 100/45T	398x189x32mm



Form of impact screwdriver + bits

CODE	CONTENT
FG 100/45P	FG 87/H4, H5, H6, H8, H10
	FG 87/TX20, TX25, TX27, TX30, TX40, TX45, TX50, TX55
	FG 87/PZ1, PZ2, PZ3, PZ4
	FG 87/PH1, PH2, PH3, PH4
	FG 87/F1, F2, F3, F4

CODE	DIMENSION
FG TER 100/45P	199x189x32mm

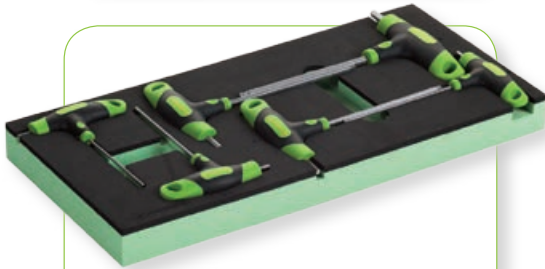




Form of 9pcs hexagonal T-Handle key wrenches + 12pcs of TX key wrenches

CODE	CONTENT	
FG 100/50E	FG 142/2 - FG 142/10	
	FG 138/TX7 - FG 138/TX50	

CODE	DIMENSION	
FG TER 100/50E	398x189x32mm	40,00



Form of 6pcs hexagonal T-Handle wrenches

CODE	CONTENT	
FG 100/50F	FG 142/2, 2.5, 3, 4, 5, 6	

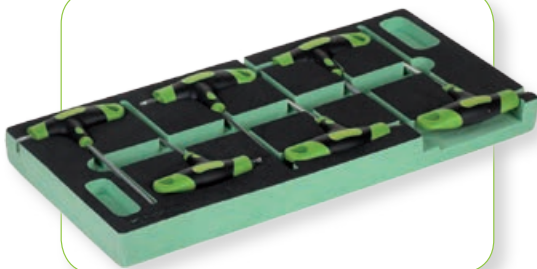
CODE	DIMENSION	
FG TER 100/50F	398x189x32mm	



Form of 6pcs Torx T-Handle wrenches

CODE	CONTENT	
FG 100/50D	FG 143/TX7 - FG 143/TX45	

CODE	DIMENSION	
FG TER 100/50D	398x189x32mm	



Form of 6pcs Torx T-Handle wrenches

CODE	CONTENT	
FG 100/50G	FG 143/TX10, TX15, TX20, TX25, TX27, TX30	

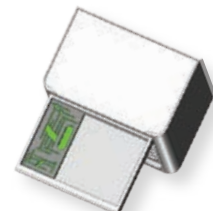
CODE	DIMENSION	
FG TER 100/50G	398x189x32mm	



Form of 7pcs hexagonal T-Handle wrenches

CODE	Pz	CONTENT	
FG 100/51H	7	2, 2.5, 3, 4, 5, 6, 8mm	

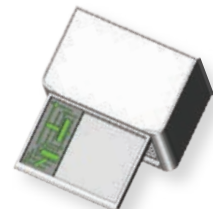
CODE	DIMENSION	
FG TER 100/51H	398x189x32mm	



Form of 8pcs Torx T-Handle wrenches

CODE	Pz	CONTENT	
FG 100/51TX	8	10, 15, 20, 25, 27, 30, 40, 45TX	

CODE	DIMENSION	
FG TER 100/51TX	398x189x32mm	





Form of car body repair tools

CODE	CONTENT	
FG 100/53	FG 130//TP, FG 130//TQ	
	FG 130//TZQ, FG 130//TPP	
	FG 131//TR, FG 131//TV,	
	FG 131//TTB	

CODE	DIMENSION	
FG TER 100/53	398x283x32mm	



Form of car body repair tools

CODE	CONTENT	
FG 100/53B	FG 130//TPP, FG 130//TQ	
	FG 131//TB, FG 131//TC, FG 131//TV	
	FG 131//SC, FG 131//SCZ, FG 131//PL12	
	FG 136/30	

CODE	DIMENSION	
FG TER 100/53B	398x283x32mm	



Form of 5pcs measuring tools

CODE	CONTENT	
FG 100/54	FG 95//CA	
	FG 188/2	
	FG 95//M1	
	FG 81//PT1	
	FG 46//MT5	

CODE	DIMENSION	
FG TER 100/54	398x189x32mm	



Form with 2pcs hammers

CODE	CONTENT	
FG 100/55B	FG 135/40, FG 136/40	

CODE	DIMENSION	
FG TER 100/55B	398x189x32mm	



Form with engineering's hammer + accessories

CODE	CONTENT	
FG 100/56	FG 132/500	
	FG 128//S12, FG 128//S16, FG 128//P4, FG 128//P3	
	FG 128//U5, FG 127//P1, FG 128//BU, FG 128//BU2	

CODE	DIMENSION	
FG TER 100/56	398x189x32mm	



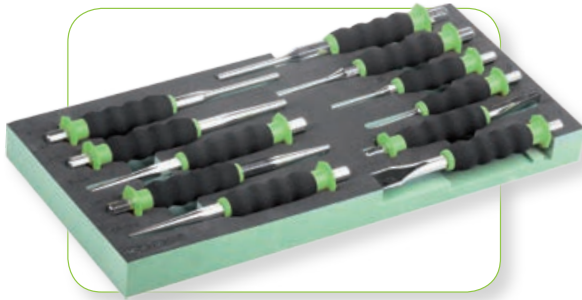
Form with engineering's hammer + accessories

CODE	CONTENT	
FG 100/56C	FG 132/500	
	FG 136/40	
	FG 126//SN1, FG 126//SN3	

CODE	DIMENSION	
FG TER 100/56C	398x189x32mm	



FASANO TOOLS



Form of percussion tools with grip handles

CODE	CONTENT	
FG 100/58C	FG 128/SC12 - FG 128/SC16	
	FG 128/CA2 - FG 128/CA10	
	FG 128/PU2 - FG 128/PU10	
	FG 128/BU3	

CODE	DIMENSION	
FG TER 100/58C	398x189x32mm	



Form with 8pcs cutting tools

CODE	CONTENT	
FG 100/61	FG 78/HSS22, FG 78/HSS51	
	FG 78/AL14, FG 78/SP1	
	FG 77/TT	
	FG 76/R1, FG 76/R2	
	FG 49/MU	

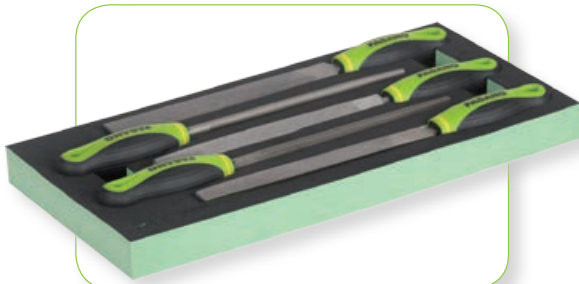
CODE	DIMENSION	
FG TER 100/60B	398x189x32mm	



Form with 5pcs second cut files with handles

CODE	CONTENT	
FG 100/62B	5pz	

CODE	DIMENSION	
FG TER 100/62B	398x189x32mm	



Form with 5pcs bastard cut files with handles

CODE	CONTENT	
FG 100/62C	5pz	

CODE	DIMENSION	
FG TER 100/62C	398x189x32mm	



Form with hole saws + accessories

CODE	CONTENT	mm	
FG 100/63	FG 78/HSS...	19,22,29,35,38,44,50,51,57,64,76,83	
	FG 78/AL14	16 - 30	
	FG 78/AL12	35 - 152	
	FG 78/PR1	300.0	
	FG 78/PC1	102x6.35	
	FG 78/SP1	40.0	

CODE	DIMENSION	
FG TER 100/63	398x189x32mm	





Form with tin snip, adjustable pliers and slip joint pliers

CODE	CONTENT	
FG 100/65	FG 58SR/250, FG 69/CJ250, FG 49/HE250	

CODE	DIMENSION	
FG TER 100/65	398x189x32mm	



Form with adjustable pliers and slip joint pliers

CODE	CONTENT	
FG 100/65B	FG 58/B240, FG 69/CJ250	

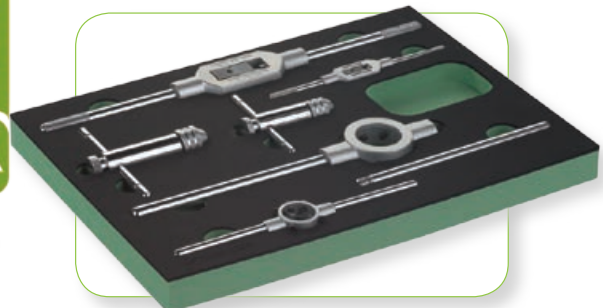
CODE	DIMENSION	
FG TER 100/65B	398x189x32mm	



Form with HSS taps and dies

CODE	
FG 100/66	

CODE	DIMENSION	
FG TER 100/66	398x283x32mm	



Form with accessories for taps and dies

CODE	
FG 100/67	

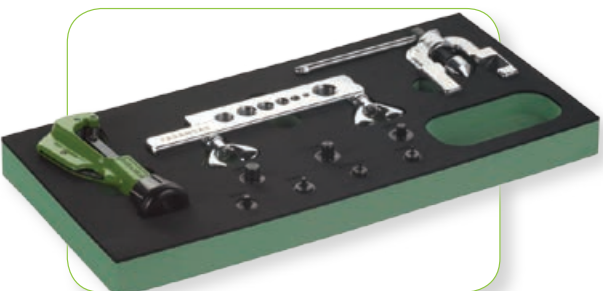
CODE	DIMENSION	
FG TER 100/64	398x283x32mm	



Form with 5pcs trim pin removers with stainless steel blade

CODE	CONTENT	
FG 100/68	FG 186/A1 - FG 186/A5	

CODE	DIMENSION	
FG TER 100/68	398x189x32mm	



Form with plumbing tools

CODE	CONTENT	
FG 100/69	FG 20/A2	
	FG 20/AD4 - FG 20/AD14	
	FG 76/R2	

CODE	DIMENSION	
FG TER 100/69	398x189x32mm	



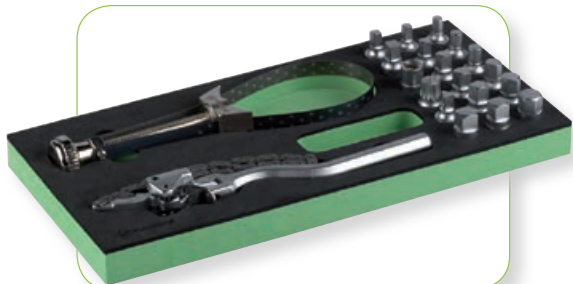
FASANO TOOLS



Form with 18pcs oil drain plugs

CODE	CONTENT	
FG 100/72	■ 5/16", 3/8", 7, 8, 10, 11, 12, 13, 14 mm	
	▲ 10 mm	
	● 8, 9, 10, 12, 14, 17 mm	
	XZN 16 mm	
	□ 10 mm	

CODE	DIMENSION	
FG TER 100/72	189x99x32mm	



Form of 18pcs oil drain plugs + 2 oil filter wrenches

CODE	
FG 100/76	

CODE	DIMENSION	
FG TER 100/76	398x189x32mm	



Form of diesel injectors seat cutters

CODE	
FG 100/73	

CODE	DIMENSION	
FG TER 100/73	199x189x32mm	



Form of 5pcs 3/8"dr. oil filter socket wrenches

CODE	CONTENT	■	
FG 100/74	24, 27, 32, 36, 38mm	3/8"	

CODE	DIMENSION	
FG TER 100/74	189x99x32mm	

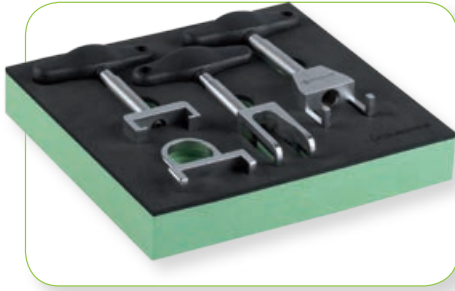


Form of 5pcs 3/8"dr. oil filter wrenches - PURFLUX model

CODE	CONTENT	■	
FG 100/74B	FG 175/PF66, FG 175/PF76 FG 175/PF86, FG 175/PF96	3/8"	

CODE	DIMENSION	
FG TER 100/74B	199x189x32mm	

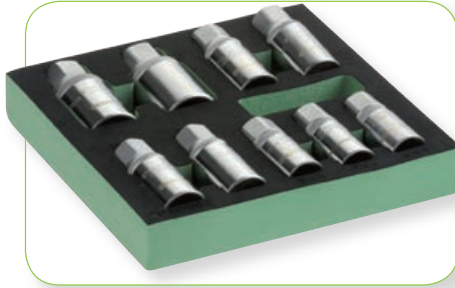




Form of 4pcs ignition coil pullers

CODE	
FG 100/75	

CODE	DIMENSION
FG TER 100/75	199x189x32mm



Form of 9pcs stud remover extractors

CODE	CONTENT
FG 100/77	FG 168/R6, R7, R8, R9, R10, R10.5, R12, R14, R16

CODE	DIMENSION
FG TER 100/77	199x189x32mm



Form of 4pcs nut spinners

CODE	
FG 100/78	

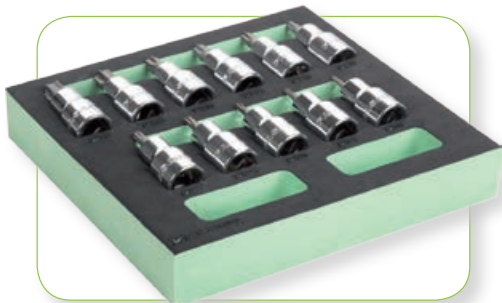
CODE	DIMENSION
FG TER 100/78	199x189x32mm



Form of internal expanders + accessories

CODE	CONTENT
FG 100/79	FG 182/ES1 - FG 182/ES7 FG 182/EG1, FG 182/EG2 FG 182/MI

CODE	DIMENSION
FG TER 100/79	398x283x32mm



Form of 1/2"dr. Torx socket bits



CODE	Pz	CONTENT
FG 100/80B	15	TX6, TX7, TX8, TX9, TX10, TX15, TX20, TX25, TX27, TX30, TX40, TX45, TX50, TX55, TX60

CODE	DIMENSION
FG TER 100/80B	199x189x32mm



Form of 1/2"dr. Torx socket bits - long series



CODE	Pz	CONTENT
FG 100/80C	6	TX30, TX40, TX45, TX50, TX55, TX60

CODE	DIMENSION
FG TER 100/80C	199x189x32mm



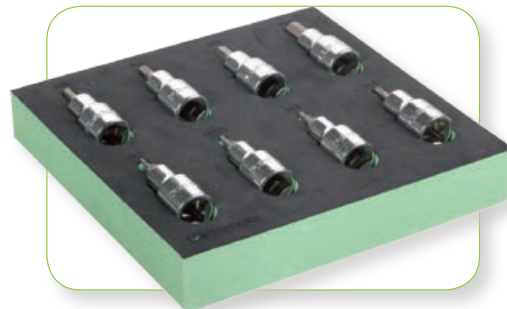


Form of 1/2"dr. hexagon socket bits - long series



CODE	Pz	CONTENT	
FG 100/81B	8	2, 2.5, 3, 4, 5, 6, 8, 10 mm	

CODE	DIMENSION	
FG TER 100/81B	199x189x32mm	

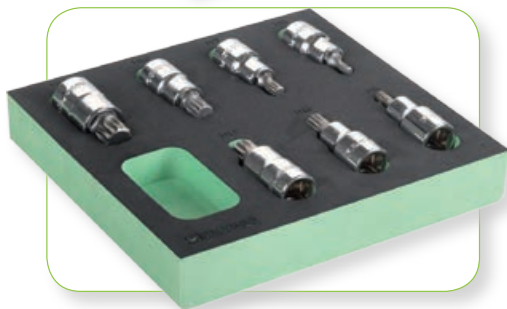


Form of 1/2"dr. hexagon socket bits



CODE	Pz	CONTENT	
FG 100/81C	8	2, 2.5, 3, 4, 5, 6, 8, 10 mm	

CODE	DIMENSION	
FG TER 100/81C	199x189x32mm	



Form of 1/2"dr. XZN socket bits



CODE	Pz	CONTENT	
FG 100/81D	7	M5, M6, M8, M10, M12, M14, M16	

CODE	DIMENSION	
FG TER 100/81D	199x189x32mm	

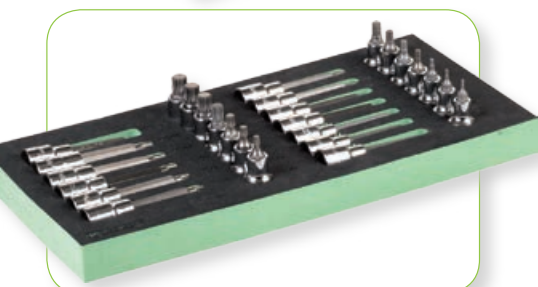


Form of 1/2"dr. XZN socket bits - long series



CODE	Pz	CONTENT	
FG 100/81E	6	LM5, LM6, LM8, LM10, LM12, LM14	

CODE	DIMENSION	
FG TER 100/81E	199x189x32mm	



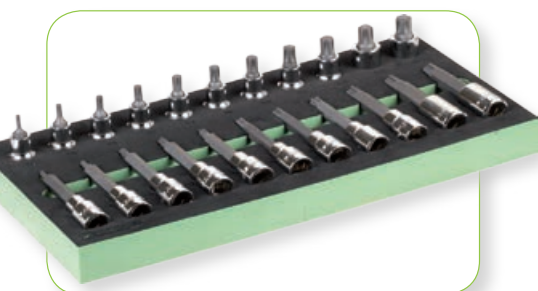
Form of 1/2"dr. XZN and Hexagon socket bits



NEW

CODE	Pz	CONTENU	
FG 100/81F	27	H2 - H8 / M5 - M16	

CODE	DIMENSION	
FG TER 100/81F	398x189x32mm	

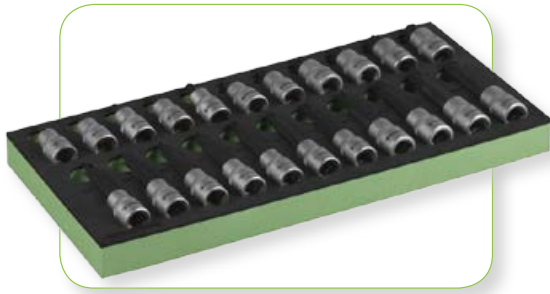


Form of 1/2"dr. RIBE socket bits



CODE	Pz	CONTENT	
FG 100/82B	22	RF4 - RF14 / LRF4 - LRF14	

CODE	DIMENSION	
FG TER 100/82B	398x189x32mm	



Form of 1/2"dr. holey RIBE socket bits



CODE	Pz	CONTENT	
FG 100/83B	22	RF4 - RF14 / LRF4 - LRF14	

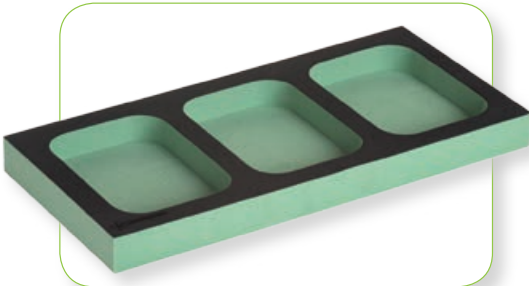
CODE	DIMENSION	
FG TER 100/83B	398x189x32mm	



Form with 1/2"dr. air impact wrench (FGA 309) + 3pcs 1/2"dr. impact extension bars

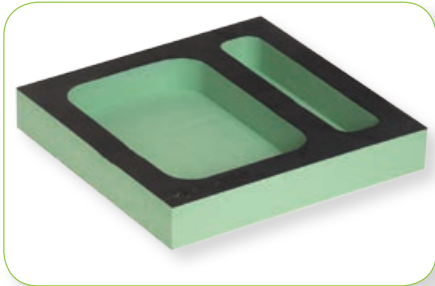
CODE		
FG 100/95D		

CODE	DIMENSION	
FG TER 100/95D	398x378x32mm	



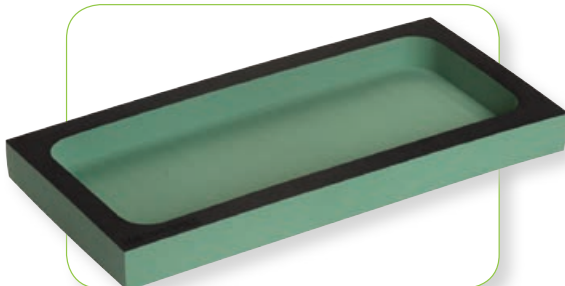
Empty form for pieces

CODE	DIMENSION	
FG 100/VA1	398x189x32mm	



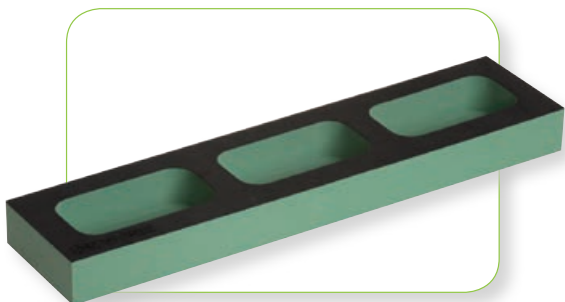
Empty form for pieces

CODE	DIMENSION	
FG 100/VA2	199x189x32mm	



Empty form for pieces

CODE	DIMENSION	
FG 100/VA3	398x189x32mm	



Empty form for pieces

CODE	DIMENSION	
FG 100/VA4	398x94x32mm	



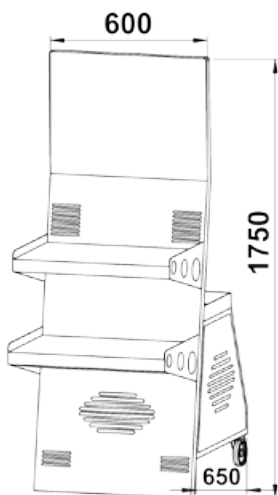
MOBILE WORKING STATION

Mobile working station

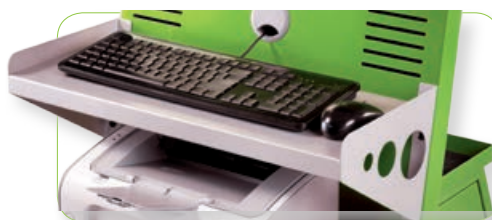
TECHNICAL FEATURES:

- enterily empty body for cables
- big back box for PC case
- 04 pcs wheel in no-marking rubber, Ø125mm (2 fixed 2 girevoli)
- 02 adjustable front shelf supports
- 01 back shel support with rubber mat
- prepared for mounting of the most common monitor on the market
- supplied without monitor and computer

CODE	
FG 107/D, FG 107/V	



FG 107



FG 107/V



FG 107/D





1° drawer



2° drawer



3° drawer



4° drawer

CODE	
FG 100/AS106	

**Assortment of 106 tools
- GENERAL MAINTENANCE**

- **FG100/03G**: Form of 14 combination wrenches 6 - 19mm
- **FG 100/21D**: Form 1/2"dr 12PT socket wrenches 8-32mm + accessori
- **FG 100/VA1**: Empty form pieces holder
- **FG 100/39C**: Form of 3pcs pliers

- **FG 100/VA1**: Empty form pieces holder
- **FG 100/45D**: Form of 6pcs slotted and PH screwdrivers
- **FG 100/48D**: Form of 40pcs 1/4"dr. bits + bit holder
- **FG 100/VA2**: Empty form pieces holder
- **FG 100/51TX**: Form of Torx T-Handle wrench
- **FG 100/51H**: Form of Hex T-Handle wrench
- **FG 100/55B**: Form of percussion tools
- **FG 100/56C**: Form of percussion tools
- **FG 100/62B**: Form of 5pcs files



1° drawer



2° drawer

NEW



3° drawer



4° drawer

CODE	
FG 100/AS104	

**Assortment of 104 tools
- GENERAL MAINTENANCE**

- **FG100/03G**: Form of 14 combination wrenches 6 - 19mm
- **FG 100/VA1**: Empty form pieces holder
- **FG 100/21B**: Form 1/2"dr 6PT socket wrenches 8-32mm + accessori
- **FG 100/39C**: Form of 3pcs pliers

- **FG 100/VA1**: Empty form pieces holder
- **FG 100/42C**: Form of 4pcs circlip pliers 19-60mm
- **FG 100/48D**: Form of 40pcs 1/4"dr. bits + bit holder
- **FG 100/VA2**: Empty form pieces holder
- **FG 100/VA1**: Empty form pieces holder
- **FG 100/45D**: Form of 6pcs slotted and PH screwdrivers
- **FG 100/65B**: Form of adjustable locking and water pump pliers
- **FG 100/VA1**: Empty form pieces holder
- **FG 100/56C**: Form of percussion tools

ASSORTMENTS OF TOOLS

1° drawer



2° drawer



3° drawer



4° drawer



**Assortment of 179 tools
- GENERAL MAINTENANCE**

CODE	
FG 100/AS179	

NEW

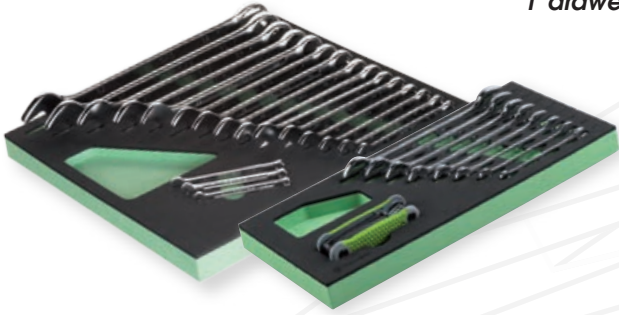
CONTENT:

- **FG100/03G:** Form of 14 combination wrenches 6 - 19mm
- **FG 100/VA1:** Empty form pieces holder
- **FG 100/03E:** Form of 8pcs double open end wrenches 6x7-20x22mm + set of 9pcs Torx allen keys
- **FG 100/VA1:** Empty form pieces holder
- **FG 100/17E:** Form of 65pcs 1/4"dr. tools
- **FG 100/21M:** Form 1/2"dr 6PT socket wrenches 8-32mm + accessori
- **FG 100/39C:** Form of 3pcs pliers
- **FG 100/45G:** Form of 7pcs SLOTTED screwdrivers
- **FG 100/45F:** Form of 6pcs PHILLIPS screwdrivers
- **FG 100/48D:** Form of 40pcs 1/4"dr. bits + bit holder
- **FG 100/VA2:** Empty form pieces holder
- **FG 100/62B:** Form of 5pcs files
- **FG 100/50F:** Form of 6pcs Hex THandle wrenches

FASANO
TOOLS



1° drawer



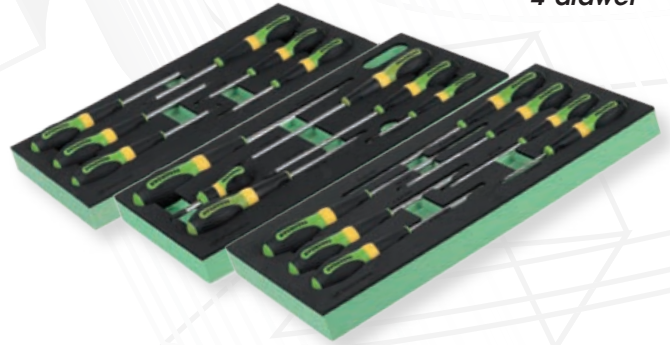
2° drawer



3° drawer



4° drawer



5° drawer



Assortment of 209 tools
- GENERAL MAINTENANCE

CODE	
FG 100/AS209	

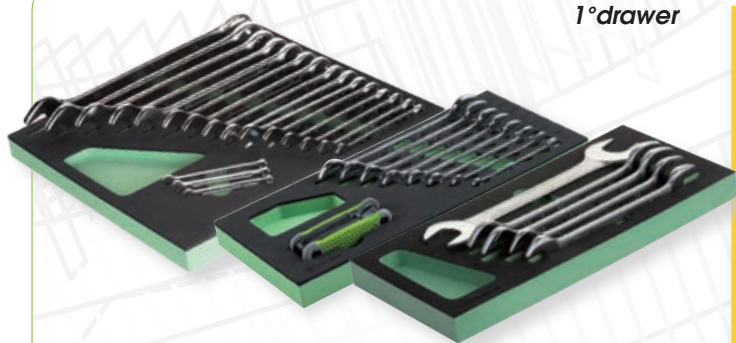
NEW

CONTENT:

- FG 100/03H: Form of 18 combination wrenches 6-32mm
- FG 100/03E: Form of 8pcs double open end wrenches 6x7-20x22mm + set of 9pcs Torx allen keys
- FG 100/17E: Form of 65pcs 1/4" dr. tools
- FG 100/03F: Form of 5pcs double open end wrenches 21x23-30x32mm
- FG 100/21B: Form 1/2" dr 6PT socket wrenches 8-32mm + accessori
- FG 100/65B: Form of adjustable locking and water pump pliers
- FG 100/42C: Form of 4pcs circlip pliers 19-60mm
- FG 100/39C: Form of 3pcs pliers
- FG 100/45I: Form of 6pcs Torx screwdrivers
- FG 100/45G: Form of 7pcs SLOTTED screwdrivers
- FG 100/45F: Form of 6pcs PHILLIPS screwdrivers
- FG 100/VA2: Empty form pieces holder
- FG 100/48D: Form of 40pcs 1/4" dr. bits + bit holder
- FG 100/51H: Form of Hex THandle wrenches
- FG 100/56C: Form of percussion tools

ASSORTMENTS OF TOOLS

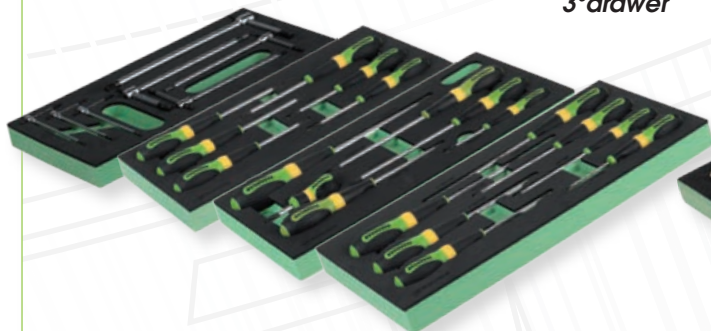
1° drawer



2° drawer



3° drawer



4° drawer



5° drawer



Assortment of 210 tools
- GENERAL MAINTENANCE

CODE	
FG 100/AS210	

NEW

- CONTENT:**
- FG 100/03H: Form of 18 combination wrenches 6-32mm
 - FG 100/03E: Form of 8pcs double open end wrenches 6x7-20x22mm + set of 9pcs Torx allen keys
 - FG 100/03F: Form of 5pcs double open end wrenches 21x23 - 30x32mm
 - FG 100/VA1: Empty form pieces holder
 - FG 100/19 Form 3/8"dr 6PT socket wrenches 8-23mm + accessori
 - FG 100/17E: Form of 65pcs 1/4"dr tools
 - FG 100/21B: Form 1/2"dr 6PT socket wrenches 8-32mm + accessori
 - FG 100/51H: Form of Hex T-Handle wrenches
 - FG 100/45I: Form of 6pcs Torx screwdrivers
 - FG 100/45G: Form of 7pcs SLOTTED screwdrivers
 - FG 100/45F: Form of 6pcs PHILLIPS screwdrivers
 - FG 100/65B: Form of adjustable locking and water pump pliers
 - FG 100/41C: Form of 4pcs circlip pliers 8-25mm
 - FG 100/42C: Form of 4pcs circlip pliers 19-60mm
 - FG 100/39C: Form of 3pcs pliers
 - 100/VA1: Empty form pieces holder
 - FG 100/58C: Form of percussion tools
 - FG 100/56C: Form of percussion tools
 - FG 100/62B: Form of 5pcs files



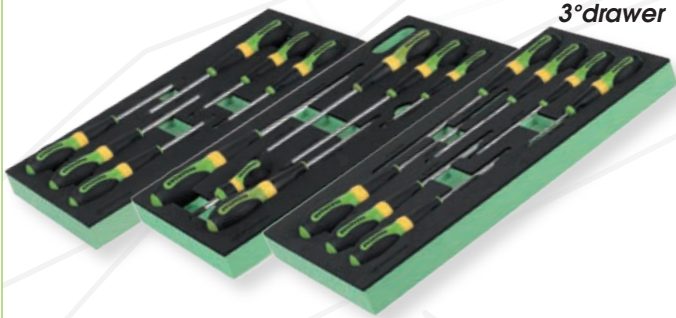


1° drawer

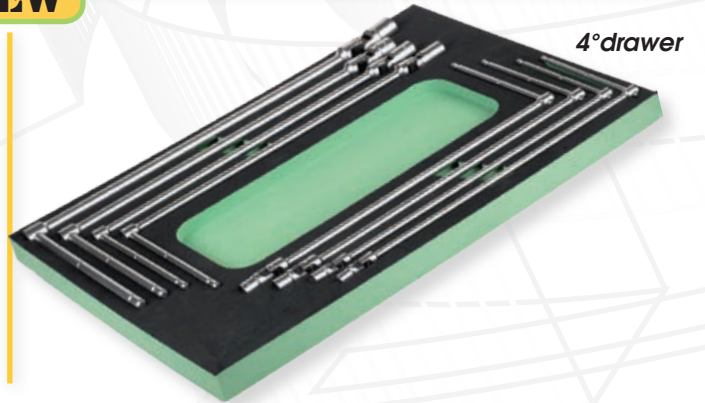


2° drawer

NEW



3° drawer



4° drawer

CODE	
FG 100/AS178	

**Assortment of 178 tools
- AUTOMOTIVE**

- **FG100/03G**: Form of 14 combination wrenches 6 - 19mm
- **FG 100/21B**: Form 1/2"dr 6PT socket wrenches 8-32mm + accessori
- **FG 100/17E**: Form of 44pcs 1/4"dr. tools
- **FG 100/21TX**: Form of 44pcs Torx tools

- **FG 100/VA1**: Empty form pieces holder
- **FG 100/39C**: Form of 3pcs pliers
- **FG 100/45I**: Form of 6pcs Torx screwdrivers
- **FG 100/45G**: Form of 7pcs SLOTTED screwdrivers
- **FG 100/45F**: Form of 6pcs PHILLIPS screwdrivers
- **FG 100/10C**: Form of 8pcs T-Handle wrenches 7-19mm



1° drawer



2° drawer



3° drawer



4° drawer

CODE	
FG 100/AS131	

**Assortment of 131 tools
- CAR BODY REPAIR SHOPS**

- **FG100/03G**: Form of 14 combination wrenches 6 - 19mm
- **FG 100/21D**: Form 1/2"dr 12PT socket wrenches 8-32mm + accessories
- **FG 100/17E**: Form of 65pcs 1/4"dr. tools
- **FG 100/39C**: Form of 3pcs pliers
- **FG 100/45E**: Form of 8pcs slotted and PH screwdrivers

- **FG 100/68**: form of 5pcs trim pin removers
- **FG 100/53B**: Form of car body repair tools
- **FG 100/VA1**: Empty form pieces holder
- **FG 69/CJ180, FG 69/CS200**: adjustable self-locking pliers
- **FG 127/P1**: ultra-flat chisel
- **FG 165/BC1**: arm puller
- **FG 186P/S5**: set of nylon trim pin removers
- **FG 80/8AR, FG 80/8AM**: Round and Half-round file with handle

ASSORTMENTS OF TOOLS

1° drawer



2° drawer



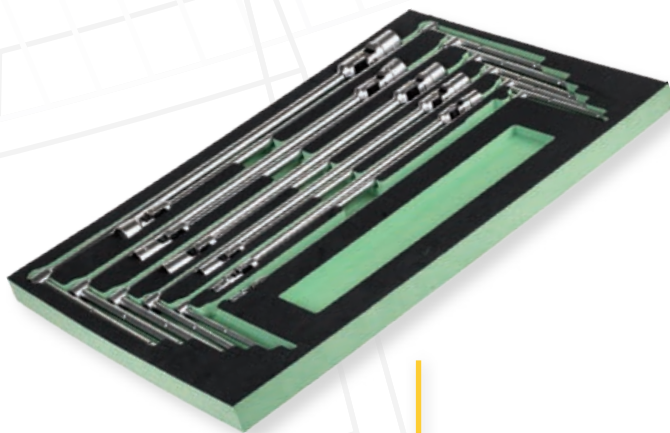
3° drawer



4° drawer



5° drawer



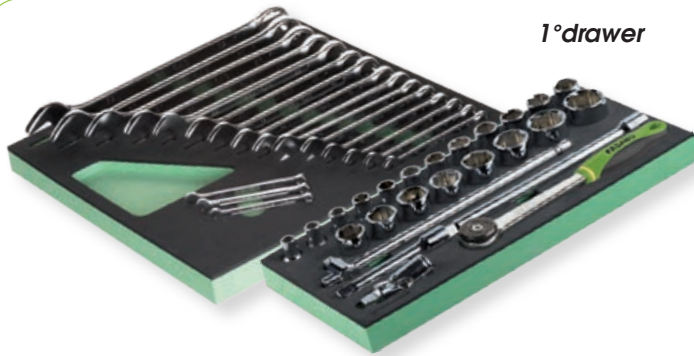
Assortment of 256 tools
- AUTOMOTIVE

CODE	
FG 100/AS256	

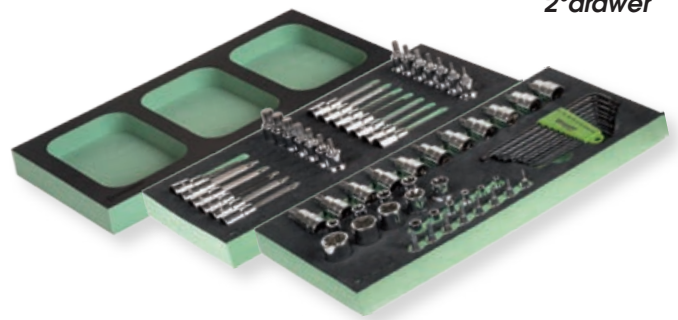
NEW

- CONTENT:**
- **FG100/03G:** Form of 14 combination wrenches 6 - 19mm
 - **FG 100/21B:** Form 1/2"dr 6PT socket wrenches 8-32mm + accessori
 - **FG 100/17E:** Form of 44pcs 1/4"dr. tools
 - **FG 100/VA1:** Empty form pieces holder
 - **FG 100/81F:** Form of 27pcs 1/2"dr. socket bits (hexagonals and XZN)
 - **FG 100/21TX:** Form of 44pcs Torx tools
 - **FG 100/VA1:** Empty form pieces holder
 - **FG 100/48G:** Form of 52pcs with 10mm drive
 - **FG 100/45D:** Form of 6pcs slotted and PH screwdrivers
 - **FG 100/65B:** Form of adjustable locking and water pump pliers
 - **FG 100/42C:** Form of 4pcs circlip pliers 19-60mm
 - **FG 100/39C:** Form of 3pcs pliers
 - **FG 100/10D:** Form of 12pcs T-Handle wrenches 7-19mm





1° drawer



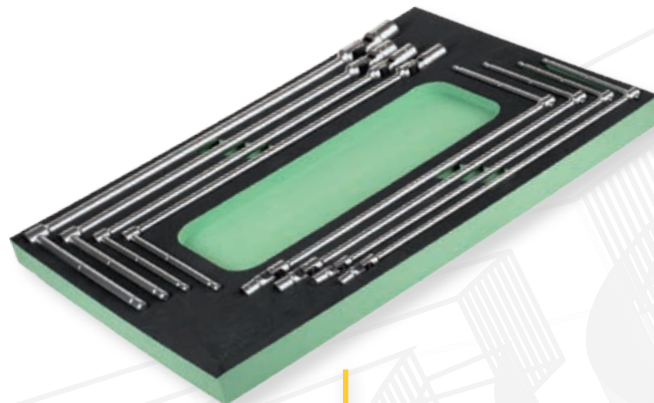
2° drawer



3° drawer



4° drawer



5° drawer

Assortment of 184 tools
- AUTOMOTIVE

CODE	
FG 100/AS184	

NEW

CONTENT:

- **FG 100/03H:** Form of 18 combination wrenches 6 - 32mm
- **FG 100/21B:** Form 1/2"dr 6PT socket wrenches 8-32mm + accessories
- **FG 100/VA1:** Empty form pieces holder
- **FG 100/81F:** Form of 27pcs 1/2"dr. socket bits (hexagonals and XZN)
- **FG 100/21TX:** Form of 44pcs Torx tools
- **FG 100/39C:** Form of 3pcs pliers
- **FG 100/42C:** Form of 4pcs circlip pliers 19-60mm
- **FG 100/65B:** Form of adjustable locking and water pump pliers
- **FG 100/45I:** Form of 6pcs Torx screwdrivers
- **FG 100/45D:** Form of 6pcs slotted and PH screwdrivers
- **FG 100/48D:** Form of 40pcs 1/4"dr. bits + bit holder
- **FG 100/VA2:** Empty form pieces holder
- **FG 100/10C:** Form of 8pcs T-Handle wrenches 7-19mm

ASSORTMENTS OF TOOLS

1° drawer



2° drawer



3° drawer



4° drawer



Assortment of 101 tools - TYRE REPAIR SHOPS

CODE	
FG 100/AS101	

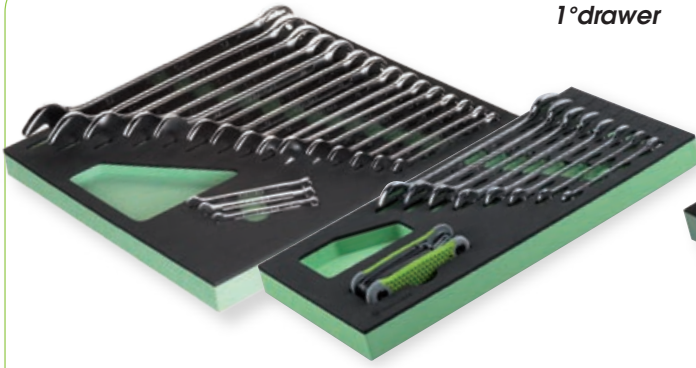
NEW

CONTENT:

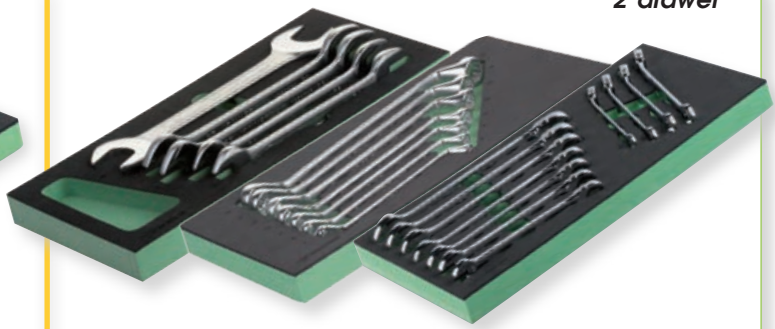
- **FG100/03G:** Form of 14 combination wrenches 6 - 19mm
- **FG 100/21C:** Form 1/2"dr 12PT socket wrenches 8-32mm + accessories
- **FG 100/45D:** Form of 6pcs slotted and PH screwdrivers
- **FG 100/23C:** Form of 20pcs 1/2"dr impact sockets
- **FG 100/39C:** Form of 3pcs pliers
- **FG 100/42C:** Form of 4pcs circlip pliers 19-60mm
- **FG 100/55B:** Form of percussion tools
- **FG 100/56C:** Form of percussion tools
- **FG 100/62B:** Form of 5pcs files
- **FG 100/VA1:** Empty form pieces holder
- **FG 100/95D:** Form with Air impact wrench (FGA 309) + impact extension bars
- **FG 535/2:** 1/2"dr. torque wrench 1/2" 20-200 Nm
- **FG 186P/S4:** Set of 4pcs nylon levers
- **FG 628/S5:** Set of 5pcs impact sockets for aluminum wheel -15,17,19,21,22mm
- **FG 198/A2:** Wheel nut wrench
- **FG 126/P500:** Tyre lever with ABS protection
- **FG 126/VP:** Tyre valve lever
- **FG 65/SR250:** Wheel balancing wight pliers



1° drawer



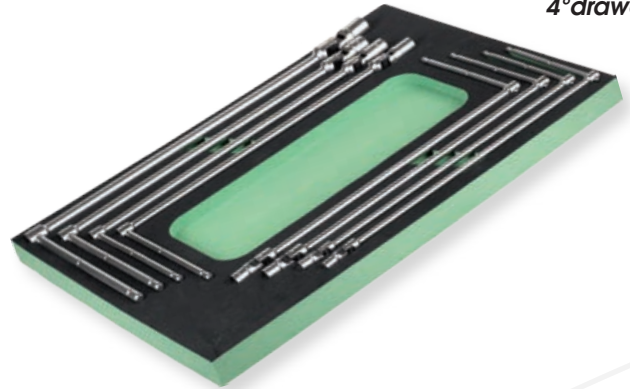
2° drawer



3° drawer



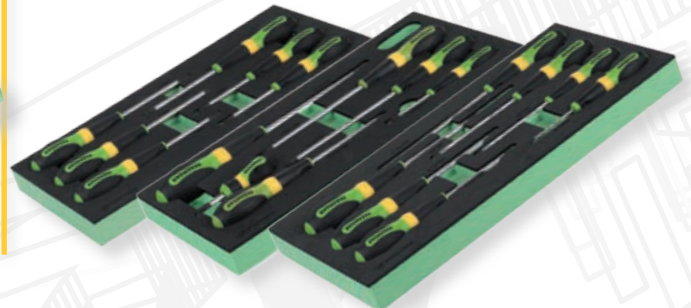
4° drawer



5° drawer



6° drawer



7° drawer



Assortment of 262 tools
- AUTOMOTIVE

NEW

CODE	
FG 100/AS262	

CONTENUTO:

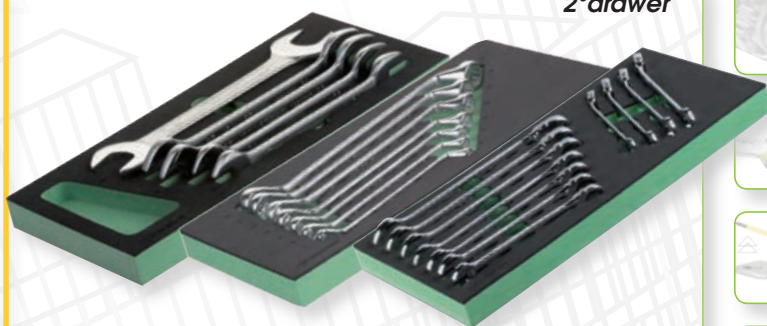
- FG 100/03H: Form of 18 combination wrenches 6-32mm
- FG 100/03E: Form of 8pcs double open end wrenches 6x7-20x22mm
- FG 100/03F: Form of 5pcs double open end wrenches 21x23 - 30x32mm - FG 100/07C: Form of 7pcs double ring wrenches 6x7 - 18x19mm
- FG 100/08B: Form of 11pcs gear wrenches 8-19mm
- FG 100/56C: Form of percussion tools
- FG 100/39C: Form of 3pcs pliers
- FG 100/42C: Form of 4pcs circlip pliers 19-60mm
- FG 100/10C: Form of 8pcs T-Handle wrenches 7-19mm
- FG 100/17E: Form of 65pcs 1/4" dr. tools
- FG 100/21TX: Form of 44pcs Torx tools
- FG 100/21B: Form 1/2" dr 6PT socket wrenches 8-32mm + accessories
- FG 100/45I: Form of 6pcs Torx screwdrivers
- FG 100/45G: Form of 7pcs SLOTTED screwdrivers
- FG 100/45F: Form of 6pcs PHILLIPS screwdrivers
- FG 100/VA2: Empty form pieces holder
- FG 100/80C: Form of 11pcs Torx socket bits - 1/2"
- FG 100/81B: Form of 8pcs Hex socket bits - 1/2"
- FG 100/81C: Form of 8pcs Hex socket bits - 1/2"
- FG 100/81D: Form of 8pcs XZN socket bits - 1/2"
- FG 100/81E: Form of 8pcs XZN socket bits - 1/2"

ASSORTMENTS OF TOOLS

1° drawer



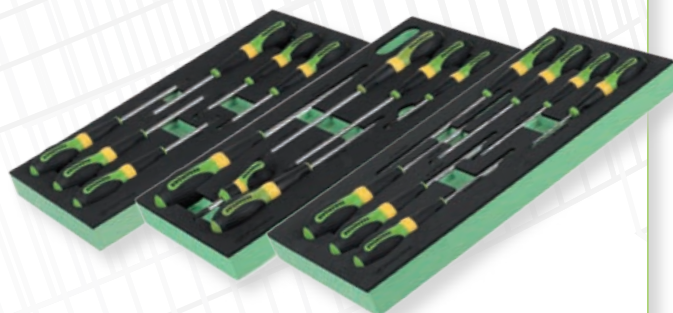
2° drawer



3° drawer



4° drawer



5° drawer



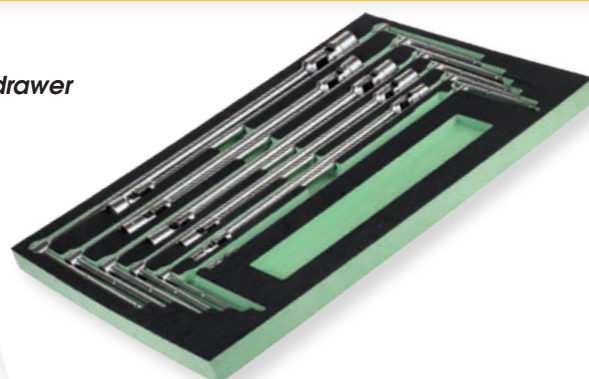
6° drawer



7° drawer



8° drawer



- **FG 100/03H:** Form of 18 combination wrenches 6-32mm
- **FG 100/03E:** Form of 8pcs double open end wrenches 6x7-20x22mm
- **FG 100/03F:** Form of 5pcs double open end wrenches 21x23 - 30x32mm
- **FG 100/07C:** Form of 7pcs double ring wrenches 6x7 - 18x19mm
- **FG 100/08B:** Form of 11pcs gear wrenches 8-19mm
- **FG 100/17E:** Form of 65pcs 1/4"dr. tools
- **FG 100/21TX:** Form of 44pcs Torx tools
- **FG 100/21B:** Form 1/2"dr 6PT socket wrenches 8-32mm + accessories
- **FG 100/45I:** Form of 6pcs Torx screwdrivers
- **FG 100/45G:** Form of 7pcs SLOTTED screwdrivers
- **FG 100/45F:** Form of 6pcs PHILLIPS screwdrivers
- **FG 100/65B:** Form of adjustable pliers
- **FG 100/39C:** Form of 3pcs pliers
- **FG 100/42C:** Form of 4pcs circlip pliers 19-60mm

- **FG 100/48G:** Form of 52pcs bits - 10mm drive
- **FG 100/56:** Form of percussion tools
- **FG 100/54:** Form of measuring tools
- **FG 100/VA2:** Empty form pieces holder
- **FG 100/80C:** Form of 11pcs Torx socket bits - 1/2"
- **FG 100/81B:** Form of 8pcs Hex socket bits - 1/2"
- **FG 100/81C:** Form of 8pcs Hex socket bits - 1/2"
- **FG 100/81D:** Form of 8pcs XZN socket bits - 1/2"
- **FG 100/81E:** Form of 8pcs XZN socket bits - 1/2"
- **FG 100/10D:** Form of 12pcs T-Handle wrenches 7-19mm

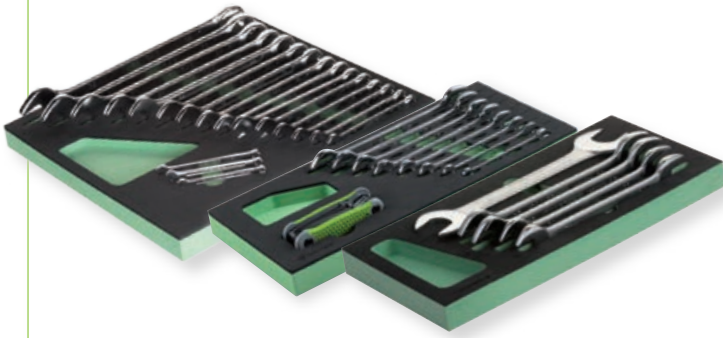
Assortment of 332 tools - AUTOMOTIVE

CODE	
FG 100/AS332	

NEW



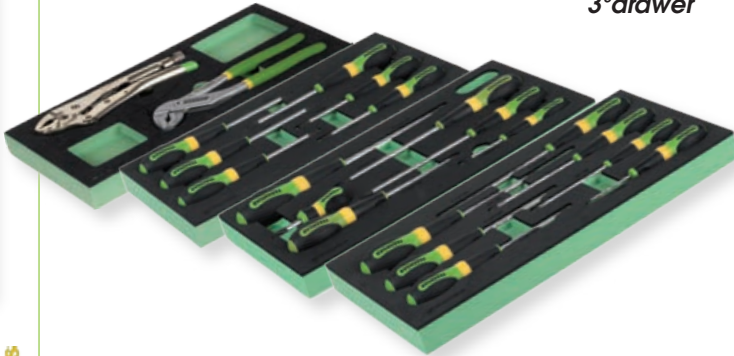
1° drawer



2° drawer



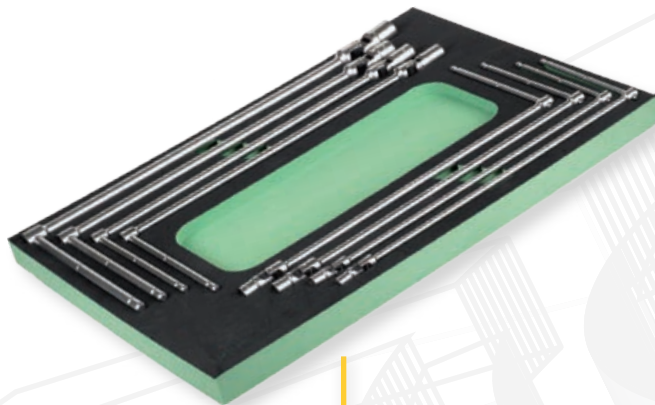
3° drawer



4° drawer



5° drawer



Assortment of 281 tools
- AUTOMOTIVE

CODE	
FG 100/AS281	

NEW

CONTENT:

- FG 100/03H: Form of 18 combination wrenches 6-32mm
- FG 100/03E: Form of 8pcs double open end wrenches 6x7-20x22mm + set of 9pcs Torx allen keys
- FG 100/03F: Form of 5pcs double open end wrenches 21x23 - 30x32mm
- FG 100/81F: Form of 27pcs 1/2"dr. socket bits (hexagonals and XZN)
- FG 100/21TX: Form of 44pcs Torx tools
- FG 100/17E: Form 1/4"dr 6PT socket wrenches 4-14mm + accessories
- FG 100/21B: Form 1/2"dr 6PT socket wrenches 8-32mm + accessories
- FG 100/65B: Form of adjustable locking and water pump pliers
- FG 100/45I: Form of 6pcs Torx screwdrivers
- FG 100/45G: Form of 7pcs SLOTTED screwdrivers
- FG 100/45F: Form of 6pcs PHILLIPS screwdrivers
- FG 100/48D: Form Of 40pcs 1/4"dr. bits + bit holder
- FG 100/VA2: Empty form pieces holder
- FG 100/41C: Form of 4pcs circlip pliers 8-25mm
- FG 100/42C: Form of 4pcs circlip pliers 19-60mm
- FG 100/39C: Form of 3pcs pliers
- FG 100/10C: Form of 8pcs T-Handle wrenches 7-19mm

ASSORTMENTS OF TOOLS

1° drawer

2° drawer

3° drawer

4° drawer

5° drawer

Assortment of 314 tools - AUTOMOTIVE

CODE	
FG 100/AS314	

NEW

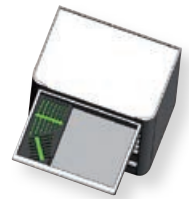
- CONTENT:**
- FG 100/03H: Form of 18 combination wrenches 6-32mm
 - FG 100/03E: Form of 8pcs double open end wrenches 6x7-20x22mm + set of 9pcs Torx allen keys
 - FG 100/03F: Form of 5pcs double open end wrenches 21x23 - 30x32mm-
 - FG 100/19: Form 3/8"dr 6PT socket wrenches 8-23mm + accessories
 - FG 100/21TX: Form of 44pcs Torx tools
 - FG 100/17E: Form of 65pcs 1/4"dr. tools
 - FG 100/21B: Form 1/2"dr 6PT socket wrenches 8-32mm + accessories
 - FG 100/81F: Form of 27pcs 1/2"dr. socket bits (hexagonals and XZN)
 - FG 100/82B: Form of 22pcs 1/2"dr. socket bits (RIBE)
 - FG 100/65B: Form of adjustable locking and water pump pliers
 - FG 100/56C: Form of percussion tools
 - FG 100/45E: Form of 8pcs SLOTTED and PHILLIPS screwdrivers
 - FG 100/48D: Form of 40pcs 1/4"dr. bits + bit holder
 - FG 100/VA2: Empty form pieces holder
 - FG 100/42C: Form of 4pcs circlip pliers 19-60mm
 - FG 100/39C: Form of 3pcs pliers
 - FG 100/10C: Form of 8pcs T-Handle wrenches 7-19mm



**Plastic tray 14 combination wrenches**

CODE	Pz	CONTENT	
FG 102/03G	14	6, 7, 8, 9, 10, 11, 12, 13, 14, 15, 16, 17, 18, 19 mm	

CODE	DIMENSION	
FG TER 102/03G	398x189x32mm	

**Plastic tray 18 combination wrenches**

CODE	Pz	CONTENT	
FG 102/03H	18	6, 7, 8, 10, 11, 12, 13, 14, 16, 17, 18, 19, 21, 22, 24, 27, 30, 32 mm	

CODE	DIMENSION	
FG TER 102/03H	398x378x32mm	

**Plastic tray 8 double open end wrenches**

CODE	Pz	CONTENT	
FG 102/03E	8	6x7, 8x9, 10x11, 12x13, 14x15, 16x17, 18x19, 20x22 mm FG 139C/FS	

CODE	DIMENSION	
FG TER 102/03E	398x189x32mm	

**Plastic tray 5 double open end wrenches**

CODE	Pz	CONTENT	
FG 102/03F	5	21x23, 24x26, 25x28, 27x29, 30x32 mm	

CODE	DIMENSION	
FG TER 102/03F	398x189x32mm	

**Plastic tray 7 double ended offset ring wrenches**

CODE	Pz	CONTENT	
FG 102/07C	7	6x7, 8x9, 10x11, 12x13, 14x15, 16x17, 18x19mm	

CODE	DIMENSION	
FG TER 102/07C	398x189x32mm	

**Plastic tray 5 double ended offset ring wrenches**

CODE	Pz	CONTENT	
FG 102/07D	5	20x22, 21x23, 24x27, 25x28, 30x32mm	

CODE	DIMENSION	
FG TER 102/07D	398x189x32mm	



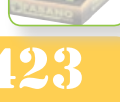
PLASTIC TRAYS FOR TOOL-BOXES



Plastic tray 11 pcs reversible gear wrenches

CODE	Pz	CONTENT	
FG 102/08B	11	8, 10, 11, 12, 13, 14, 15, 16, 17, 18, 19mm	

CODE	DIMENSION		
FG TER 102/08B	398x189x32mm		



Plastic tray 8 T-handle wrenches

CODE	Pz	CONTENT	
FG 102/10C	8	7, 8, 10, 11, 13, 14, 17, 19 mm	

CODE	DIMENSION		
FG TER 102/10C	566x398x32mm		50,00



Plastic tray 11 pcs 1/4"dr. sockets + accessories

CODE	CONTENT	
FG 102/17	18pz	

CODE	DIMENSION		
FG TER 102/17	398x198x32mm		



FG 624/E4,5,6,7,8,9,10,
11,12,13,14mm

FG 624/GR14C

FG 624/CR14

FG 624/PA50, 100

FG 624/SN14

FG 624/PRF150

FG 624/ES14

Plastic tray 65pcs 1/4"dr. tools

CODE	CONTENT	
FG 102/17E	65pz	

CODE	DIMENSION		
FG TER 102/17E	398x198x32mm		



4,5,6,7,8,9,10,
11,12,13,14mm

FG 624/SN14

FG 624/CR14

FG 624/GR14C

FG 624/PA50, 100

FG 148/H1.5-H10

FG 148/PH1-PH4

FG 148/TX8-TX40

FG 148/F1-F5

FG 624/PRF150

FG 624/ES14

FG 139/L

3/8"


Plastic tray 15 3/8" dr. sockets + accessories





CODE	CONTENT	
FG 102/19	22Pz	


CODE	DIMENSION	
FG TER 102/19	398x198x32mm	




 **FG 624/B8,9,10,11,12,13,14, 15, 16,17,18,19,21,22,23mm**

 **FG 624/CR38**

 **FG 624/SN38**

 **FG 624/ES38**

 **FG 624B/PA75,100,125,250**

1/2"


Plastic tray 20 1/2" dr. 6PT sockets + accessories





CODE	CONTENT	
FG 102/21B	25Pz	


CODE	DIMENSION	
FG TER 102/21B	398x198x32mm	




 **FG 625/A10,11,12,13,14,15, 16,17,18,19,20,21,22,23,24, 25,26,27,30,32mm**

 **FG 625/CR12**

 **FG 625/SN12**

 **FG 625/ES12**

 **FG 625/PA125, 250**

1/2"


Plastic tray 20 1/2" dr. 12PT sockets + accessories





CODE	CONTENT	
FG 102/21C	25Pz	


CODE	DIMENSION	
FG TER 102/21C	398x198x32mm	




 **FG 625/C10,11,12,13,14,15, 16,17,18,19,20,21,22,23,24, 25,26,27,30,32mm**

 **FG 625/CR12**

 **FG 625/SN12**

 **FG 625/ES12**

 **FG 625/PA125, 250**

1/2"


Plastic tray 12 1/2" dr. 12PT sockets + accessories





CODE	CONTENT	
FG 102/21D	16Pcs	


CODE	DIMENSION	
FG TER 102/21D	398x198x32mm	




 **FG 625/C8, 10, 12, 13, 15, 17, 19, 21, 24, 27, 30, 32mm**

 **FG 625/CR12**

 **FG 625/SN12**

 **FG 625/ES12**

 **FG 625/PA125**

PLASTIC TRAYS FOR TOOL-BOXES




1/2"

Plastic tray 12 1/2" dr. 6PT sockets + accessories

CODE	CONTENT	
FG 102/21E	16Pz	

CODE	DIMENSION	
FG TER 102/21D	398x198x32mm	



 **FG 625/C8, 10, 12, 13, 15, 17, 19, 21, 24, 27, 30, 32mm**

 **FG 625/SN12**

 **FG 625/CR12**

 **FG 625/ES12**

 **FG 625/PA125**

1/2"

1/4"

Plastic tray 44 Torx tools

CODE	CONTENT	
FG 102/21TX	44Pz	

CODE	DIMENSION	
FG TER 102/21TX	398x198x32mm	



 **FG 624/TX4 - TX10**

 **FG 150/TX10 - TX60**

 **FG 625/TX8 - TX24**

 **FG 138/C**

 **FG 147/TX9 - TX40**



Plastic tray 1/2" dr. hexagonal and XZN socket bits



NEW

CODE	Pz	CONTENT	
FG 102/21H	27	H2 - H8 / M5 - M16	

CODE	DIMENSION	
FG TER 102/21H	398x189x32mm	



Plastic tray 1/2" dr. RIBE socket bits



NEW

CODE	Pz	CONTENT	
FG 102/21R	22	R4 - R14 / LR4 - LR14	

CODE	DIMENSION	
FG TER 102/21R	398x189x32mm	



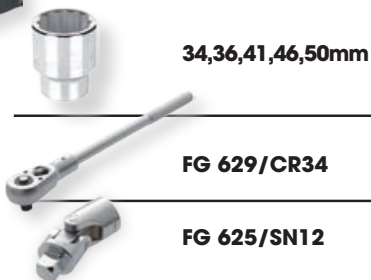
3/4"



Plastic tray 5 3/4" dr. 6PT sockets + accessories

CODE	CONTENT	
FG 102/25	9Pz	

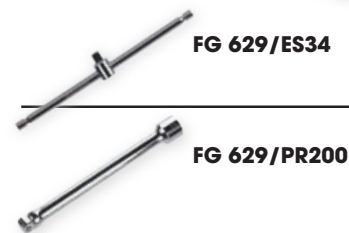
CODE	DIMENSION	
FG TER 102/25	398x377x32mm	



34,36,41,46,50mm

FG 629/CR34

FG 625/SN12



FG 629/ES34

FG 629/PR200



3/4"



Plastic tray 5 3/4" dr. 12PT sockets + accessories

CODE	CONTENT	
FG 102/25B	9Pz	

CODE	DIMENSION	
FG TER 102/25B	398x377x32mm	



34,36,41,46,50mm

FG 629/CR34

FG 625/SN12



FG 629/ES34

FG 629/PR200



Plastic tray of 14pcs 1/2"dr. impact tools

CODE	Pz	CONTENT	
FG 102/23C	14	10,11,12,13,14,16,17,18,19,21,22,23,24mm + FG 628/PR125	

CODE	DIMENSION	
FG TER 102/23C	398x189x32mm	



Plastic tray 10 pipe wrenches

CODE	Pz	CONTENT	
FG 102/13C	10	6,7,8,10,11,12,13,14, 17,19mm	

CODE	DIMENSION	
FG TER 102/13C	398x198x32mm	



Plastic tray 7 6PT T-handle wrenches

CODE	Pz	CONTENT	
FG 102/51H	7	2, 2.5, 3, 4, 5, 6, 8mm	

CODE	DIMENSION	
FG TER 102/51H	398x189x32mm	





Plastic tray 3 pliers

CODE	Pz	CONTENT
FG 102/39C	3	FG 59SR/180, FG 61SR/160, FG 63SR/160

CODE	DIMENSION
FG TER 102/39C	398x189x32mm



Plastic tray 3 pliers

CODE	Pz	CONTENT
FG 102/39D	3	FG 59PV/180, FG 61PV/160, FG 63PV/160

CODE	DIMENSION
FG TER 102/39D	398x189x32mm



Plastic tray 4 circlip pliers

CODE	CONTENT	CAPACITY
FG 102/41C	FG 51/140B	8-25mm
	FG 52/140B	8-25mm
	FG 53/140B	8-25mm
	FG 54/140B	8-25mm

CODE	DIMENSION
FG TER 102/41C	398x189x32mm



Plastic tray 4 circlip pliers

CODE	CONTENT	CAPACITY
FG 102/42C	FG 51/180	19-60mm
	FG 52/180	19-60mm
	FG 53/180	19-60mm
	FG 54/180	19-60mm

CODE	DIMENSION
FG TER 102/42C	398x189x32mm



Plastic tray 6 screwdrivers - Slotted and Phillips

CODE	Pz	CONTENT
FG 102/45D	6	3x100, 4x125, 5.5x150, 6.5x150 PH1x80, PH2x150

CODE	DIMENSION
FG TER 102/45D	398x189x32mm



Plastic tray 8 screwdrivers - Slotted and Phillips

CODE	Pz	CONTENT
FG 102/45E	8	3x100, 4x125, 5.5x150, 6.5x150, 6.5x38 PH1x80, PH2x150, PH2x38

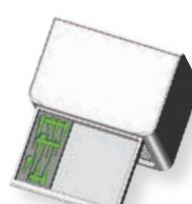
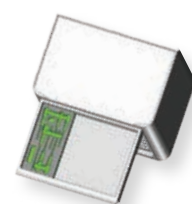
CODE	DIMENSION
FG TER 102/45E	398x189x32mm



Plastic tray 12 screwdrivers - Slotted and Phillips

CODE	Pz	CONTENT
FG 102/45U	12	2.5x60, 3x75, 4x30, 4x100, 5.5x150, 8x150 PH0x60, PH1x30, PH1x80, PH2x100, PH3x150

CODE	DIMENSION
FG TER 102/45U	398x377x32mm

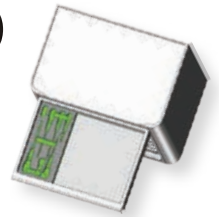




Plastic tray 6 screwdrivers - Phillips

CODE	Pz	CONTENT	
FG 102/45F	6	PH0x60, PH1x150, PH2x100, PH2x150, PH3x150, PH2x38	

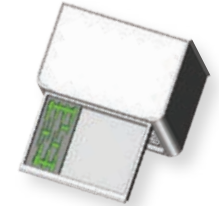
CODE	DIMENSION	
FG TER 102/45F	398x189x32mm	



Plastic tray 6 screwdrivers - Slotted

CODE	Pz	CONTENT	
FG 102/45G	7	2.5x60, 3x100, 3.5x100, 4x125, 5.5x150, 5.5x100, 6.5x150	50,00

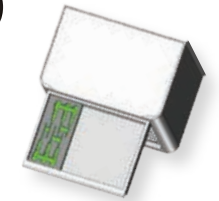
CODE	DIMENSION	
FG TER 102/45G	398x189x32mm	20,00



Plastic tray 6 screwdrivers - TORX

CODE	Pz	CONTENT	
FG 102/45I	6	TX10, TX15, TX20, TX25, TX27, TX30	

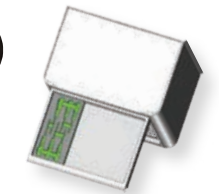
CODE	DIMENSION	
FG TER 102/45I	398x189x32mm	



Plastic tray 6 nut spinners with handle

CODE	Pz	CONTENT	
FG 102/45T	6	FX6, FX7, FX8, FX10, FX13	

CODE	DIMENSION	
FG TER 102/45T	398x189x32mm	



Plastic tray 40 1/4"dr. bits + 1/4"dr. bit holder

CODE	CONTENT	
FG 102/48D	FG 85/25F1, F2, F3, F4, F5, F6, F7	
	FG 85/25PH0, PH1, PH2, PH3	
	FG 85/25PZ1, Pz2, Pz3	
	FG 85/H1.5, H2, H3, H4, H5, H6, H8, H10	
	FG 85/25T10, T15, TT20, T25, T27, T30, T40	
	FG 85/25TT10, TT15, TT20, TT25, TT27, TT30, TT40	
	FG 85/25M4, M5, M6, M10	

CODE	DIMENSION	
FG TER 102/48D	398x189x32mm	



Plastic tray of 52pcs bits with 10mm drive

CODE	CONTENT	
FG 102/48G	FG 86/30H4- H14, FG 86/75H4 - H14	
	FG 86/30T20 - T55, FG 86/75T20 - T55	
	FG 86/30TT20 - TT55, FG 86/75TT20- TT55	
	FG 86/30M5 - M14, FG 86/75M5- M12	

CODE	DIMENSION	
FG TER 102/48G	398x189x32mm	





Plastic tray 6 hex T-Handle wrenches

CODE	Pz	CONTENT	
FG 102/50F	6	2, 2.5, 3, 4, 5, 6	

CODE	DIMENSION	
FG TER 102/50F	398x189x32mm	



Plastic tray 6 Torx T-Handle wrenches

CODE	Pz	CONTENT	
FG 102/50G	6	TX10, TX15, TX20, TX25, TX27, TX30	

CODE	DIMENSION	
FG TER 102/50G	398x189x32mm	



Plastic tray of percussion tools

CODE	CONTENT	
FG 102/56C	FG 132/500	
	FG 136/40	
	FG 126/SN1, FG 126/SN3	

CODE	DIMENSION	
FG TER 102/56C	398x189x32mm	



Plastic tray of cutting tools

CODE	CONTENT	
FG 102/60C	FG 50/MS	
	FG 48/L	
	FG 497/OP1	
	FG 44/MT5	

CODE	DIMENSION	
FG TER 102/60C	398x189x32mm	



Plastic tray 5 second cut files

CODE	CONTENT	
FG 102/62B	5pz	

CODE	DIMENSION	
FG TER 102/62B	398x189x32mm	



Plastic tray with adjustable locking pliers and water pump pliers

CODE	CONTENT	
FG 102/65B	FG 58/B240, FG 69/CJ250	

CODE	DIMENSION	
FG TER 102/65B	398x189x32mm	20,00



Empty plastic tray for pieces

CODE	CONTENT	
FG 102/VA1	398x189x32mm	





NEW



CODE	
FG 102/AS100	

Assortment of 100 tools
- Application: general maintenance

- FG 102/03G: Plastic tray of 14 combination wrenches 6 - 19mm
- FG 102/VA1: Empty Plastic tray pieces holder
- FG 102/21E: Plastic tray 1/2"dr 6PT socket wrenches 8-32mm + accessori
- FG 102/39D: Plastic tray of 3pcs pliers

- FG 102/VA1: Empty Plastic tray pieces holder
- FG 102/45E: Plastic tray of 8pcs slotted and PH screwdrivers
- FG 102/48D: Plastic tray of 40pcs 1/4"dr. bits + bit holder
- FG 102/51H: Plastic tray of Hex T-Handle wrench
- FG 102/65B: Plastic tray of adjustable pliers + water pump pliers
- FG 102/60C: Plastic tray of cutting tools
- FG 102/VA1: Empty Plastic tray pieces holder
- FG 102/62B: Plastic tray of 5pcs files



NEW



CODE	
FG 102/AS140	

Assortment of 140 tools
- Application: general maintenance

- FG 102/03G: Plastic tray of 14 combination wrenches 6 - 19mm
- FG 102/21B: Plastic tray 1/2"dr 12PT socket wrenches 8-32mm + accessori
- FG 100/03E: Form of 8pcs double open end wrenches 6x7-20x22mm + set of 9pcs Torx allen keys

- FG 102/17: Plastic tray of 1/4"dr. sockets (4-14mm) + accessories
- FG 100/39D: Form of 3pcs pliers
- FG 102/42C: Modulo 4 pinze per anelli 19-60mm
- FG 102/48D: Plastic tray of 40pcs 1/4"dr. bits + bit holder
- FG 102/45G: Plastic tray of 7pcs SLOTTED screwdrivers
- FG 102/45F: Plastic tray of 6pcs PHILLIPS screwdrivers
- FG 102/60C: Plastic tray of cutting tools
- FG 102/VA1: Empty Plastic tray pieces holder
- FG 102/65B: Plastic tray of adjustable pliers + water pump pliers

ASSORTMENTS OF TOOLS

1° drawer



2° drawer



3° drawer



4° drawer



5° drawer



Assortment of 198 tools
-Application: general maintenance

CODE	
FG 102/AS198	

NEW

CONTENT:

- FG 102/03H: Plastic tray of 18 combination wrenches 6-32mm
- FG 102/03E: Plastic tray of 8pcs double open end wrenches 6x7-20x22mm + set of 9pcs Torx allen keys
- FG 102/17E: Plastic tray of 65pcs 1/4" dr. tools
- FG 102/VA1: Empty Plastic tray pieces holder
- FG 102/21B: Plastic tray 1/2" dr 6PT socket wrenches 8-32mm + accessori
- FG 102/VA1: Empty Plastic tray pieces holder
- FG 102/39C: Plastic tray of 3pcs pliers
- FG 102/42C: Plastic tray of 4pcs circlip pliers 19-60mm
- FG 102/48D: Plastic tray of 40pcs 1/4" dr. bits + bit holder
- FG 102/45G: Plastic tray of 7pcs SLOTTED screwdrivers
- FG 102/45F: Plastic tray of 6pcs PHILLIPS screwdrivers
- FG 102/60C: Plastic tray of cutting tools
- FG 102/65B: Plastic tray of adjustable pliers + water pump pliers
- FG 102/51H: Plastic tray of Hex T-Handle wrench





1° drawer



2° drawer



3° drawer



4° drawer



5° drawer

Assortment of 199 tools
- Application: general maintenance

CODE	
FG 102/AS199	

NEW

- CONTENT:**
- FG 102/03H: Plastic tray of 18 combination wrenches 6-32mm
 - FG 102/03E: Plastic tray of 8pcs double open end wrenches 6x7-20x22mm + set of 9pcs Torx allen keys
 - FG 102/17E: Plastic tray of 65pcs 1/4" dr. tools
 - FG 102/03F: Plastic tray of 5pcs double open end wrenches 21x23-30x32mm
 - FG 102/21B: Plastic tray 1/2" dr 6PT socket wrenches 8-32mm + accessori
 - FG 102/39C: Plastic tray of 3pcs pliers
 - FG 102/VA1: Empty plastic tray for pieces
 - FG 102/42C: Plastic tray of 4pcs circlip pliers 19-60mm
 - FG 102/48D: Plastic tray of 40pcs 1/4" dr. bits + bit holder
 - FG 102/45F: Plastic tray of 6pcs PHILLIPS screwdrivers
 - FG 102/45G: Plastic tray of 7pcs SLOTTED screwdrivers
 - FG 102/65B: Plastic tray of adjustable pliers and water pump pliers
 - FG 102/VA1: Empty plastic tray for pieces
 - FG 102/51H: Plastic tray of Hex T-Handle wrench

ASSORTMENTS OF TOOLS



1°drawer



2°drawer



3°drawer



4°drawer



5°drawer

Assortment of 251 tools
-Application: general maintenance

CODE	
FG 102/AS251	

NEW

- CONTENT:**
- **FG 102/03H:** Plastic tray of 18 combination wrenches 6-32mm
 - **FG 102/03E:** Plastic tray of 8pcs double open end wrenches 6x7-20x22mm + set of 9pcs Torx allen keys
 - **FG 102/03F:** Plastic tray of 5pcs double open end wrenches 21x23-30x32mm
 - **FG 100/21TX:** Plastic tray of 44pcs Torx tools
 - **FG 100/21H:** Plastic tray of 27pcs socket bits (hexagonals and XZN)
 - **FG 102/17E:** Plastic tray of 65pcs 1/4"dr. tools
 - **FG 102/21B:** Plastic tray 1/2"dr 6PT socket wrenches 8-32mm + accessori
 - **FG 102/45T:** Plastic tray 6pcs nut spinner with handle
 - **FG 102/45I:** Plastic tray of 6pcs Torx screwdrivers
 - **FG 102/45F:** Plastic tray of 6pcs PHILLIPS screwdrivers
 - **FG 102/45G:** Plastic tray of 7pcs SLOTTED screwdrivers
 - **FG 102/65B:** Plastic tray of adjustable pliers and water pump pliers
 - **FG 102/39C:** Plastic tray of 3pcs pliers
 - **FG 102/42C:** Plastic tray of 4pcs circlip pliers 19-60mm
 - **FG 102/41C:** Plastic tray of 4pcs circlip pliers 8-25mm
 - **FG 102/60C:** Plastic tray of cutting tools
 - **FG 102/56C:** Plastic tray of percussion tools
 - **FG 102/VA1:** Empty plastic tray for pieces
 - **FG 102/62B:** Plastic tray of files

1° drawer



2° drawer



NEW

3° drawer



4° drawer



CODE	
FG 102/AS193	

Assortment of 193pcs tools
- Application: Automotive

- FG 102/03G: Plastic tray of 14 combination wrenches 6 - 19mm
- FG 102/21C: Plastic tray 1/2"dr 12PT socket wrenches 8-32mm + accessori
- FG 100/17E: Plastic tray of 65pcs 1/4"dr. tools
- FG 102/39D: Plastic tray of 3pcs pliers

- FG 102/45E: Plastic tray of 8pcs slotted and PH screwdrivers
- FG 102/45I: Plastic tray of Torx screwdrivers
- FG 102/48G: Plastic tray of 52pcs bits with 10mm drive
- FG 102/50F: Plastic tray of 6pcs hex T-handles wrenches
- FG 102/50G: Plastic tray of 6pcs Torx T-handles wrenches
- FG 102/10C: Plastic tray of 8pcs hex swivel T-Handle wrenches 7-19mm

1° drawer



2° drawer



3° drawer



4° drawer



CODE	
FG 102/AS132	

Assortment of 132pcs tools
- Application: car body shop

- FG 102/03G: Plastic tray of 14 combination wrenches 6 - 19mm
- FG 102/21D: Plastic tray 1/2"dr 12PT socket wrenches 8-32mm + accessori
- FG 100/17E: Plastic tray of 65pcs 1/4"dr. tools
- FG 102/39C: Plastic tray of 3pcs pliers
- FG 102/VA1: Empty Plastic tray pieces holder
- FG 102/45E: Plastic tray of 8pcs slotted and PH screwdrivers

- FG 130/S10: Set of special tools for car body repair shop
- FG 69/CJ180, FG 69/CS200: Adjustable pliers
- FG 127/P1: Extra-flat chisel
- FG 165/BC1: Windshield wiper arm remover
- FG 186P/S5: Set of 5pcs Nylon trim pin removers
- FG 80/8AR, FG 80/8AM: files
- FG 186P/S5: Set of 5pcs trim pin removers with Stainless steel blades

ASSORTMENTS OF TOOLS



3°drawer



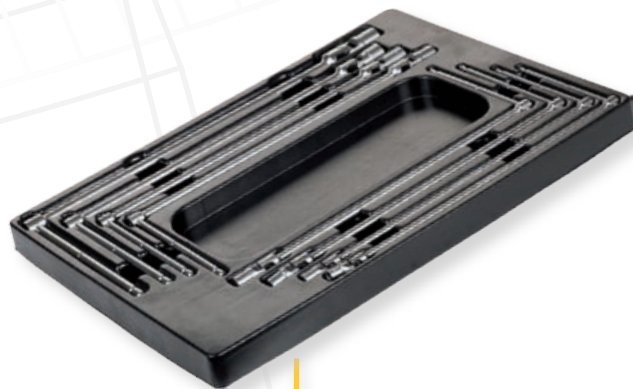
4°drawer



3°drawer



4°drawer



5°drawer

Assortment of 251pcs tools
- Application: Automotive

CODE	
FG 102/AS251-B	

NEW

- CONTENT:**
- FG 102/03H: Plastic tray of 18 combination wrenches 6-32mm
 - FG 102/21B: Plastic tray 1/2"dr 6PT socket wrenches 8-32mm + accessori
 - FG 100/21TX: Plastic tray of 44pcs Torx tools
 - FG 102/17E: Plastic tray of 65pcs 1/4"dr. tools
 - FG 100/21H: Plastic tray of 27pcs socket bits (hexagonals and XZN)
 - FG 102/42C: Plastic tray of 4pcs circlip pliers 19-60mm
 - FG 102/39C: Plastic tray of 3pcs pliers
 - FG 102/65B: Plastic tray of adjustable pliers and water pump pliers
 - FG 102/48D: Plastic tray of 40pcs bit with 1/4" drive
 - FG 102/45E: Plastic tray of 8pcs slotted and PH screwdrivers
 - FG 102/45I: Plastic tray of 6pcs Torx screwdrivers
 - FG 102/10C: Plastic tray of 8pcs hex swivel T-Handle wrenches 7-19mm



1° drawer



2° drawer



3° drawer



4° drawer



5° drawer



Assortment of 212 tools
- Application: Automotive

CODE	
FG 102/AS212	

NEW

CONTENT:

- FG 102/03H: Plastic tray of 18 combination wrenches 6-32mm
- FG 102/21B: Plastic tray 1/2" dr 6PT socket wrenches 8-32mm + accessori
- FG 102/21TX: Plastic tray of 44pcs Torx tools
- FG 102/17E: Plastic tray of 65pcs 1/4" tools
- FG 100/21H: Plastic tray of 27pcs socket bits (hexagonals and XZN)
- FG 102/45E: Plastic tray of 8pcs slotted and PH screwdrivers
- FG 102/39C: Plastic tray of 3pcs pliers
- FG 102/42C: Plastic tray of 4pcs circlip pliers 19-60mm
- FG 102/VA1: Empty plastic tray for pieces
- FG 102/50F: Plastic tray of 6pcs hex T-handles wrenches
- FG 102/50G: Plastic tray of 6pcs Torx T-handles wrenches
- FG 102/10C: Plastic tray of 8pcs hex swivel T-Handle wrenches 7-19mm

ASSORTMENTS OF TOOLS

1° drawer



2° drawer



3° drawer



4° drawer



Assortment of 90 tools
- Application: Automotive

CODE	
FG 102/AS90	

NEW

CONTENT:

- FG 102/03G: Plastic tray of 14pcs combination wrenches 6-19mm
- FG 102/21C: Plastic tray 1/2"dr 12PT socket wrenches 8-32mm + accessori
- FG 102/45D: Plastic tray of 6pcs slotted and PH screwdrivers
- FG 100/23C: Plastic tray of 1/2"dr impact sockets
- FG 102/42C: Plastic tray of 4pcs circlip pliers 19-60mm
- FG 102/39C: Plastic tray of 3pcs pliers
- FG 102/56C: Modulo utensili da paercussione
- FG 102/VA1: Empty plastic tray for pieces
- FG 102/62B: Plastic tray of files
- FGA 309: 1/2"dr. pneumatic impact wrench
- FG 535/2: 1/2"dr. torque wrench 20-200 Nm
- FG 186P/S4: Set of 4pcs Nylon levers
- FG 628/S5: Set of 5pcs 1/2"dr. impact sockets for aluminum wheels -15,17,19,21,22mm
- FG 198/A2: Wheel nut wrench
- FG 126/P500: Tyre lever with ABS protection
- FG 126/VP: Tyre valve lever
- FG 65SR/250: Wheel balancing weight pliers





1° drawer



2° drawer



3° drawer



4° drawer



5° drawer

Assortment of 279 tools
- Application: Automotive

CODE	
FG 102/AS279	

NEW

CONTENT:

- FG 102/03H: Plastic tray of 18 combination wrenches 6-32mm
- FG 102/03E: Plastic tray of 8pcs double open end wrenches 6x7-20x22mm + set of 9pcs Torx allen keys
- FG 102/03F: Plastic tray of 5pcs double open end wrenches 21x23-30x32mm
- FG 102/21TX: Plastic tray of 44pcs Torx tools
- FG 100/21H: Plastic tray of 27pcs socket bits (hexagonals and XZN)
- FG 102/17E: Plastic tray of 65pcs 1/4" dr. tools
- FG 102/21B: Plastic tray 1/2" dr 6PT socket wrenches 8-32mm + accessories
- FG 102/48D: Plastic tray of 40pcs 1/4" dr. bits + bit holder
- FG 102/45F: Plastic tray of 6pcs PHILLIPS screwdrivers
- FG 102/45G: Plastic tray of 7pcs SLOTTED screwdriver
- FG 102/45I: Plastic tray of 6pcs Torx screwdrivers
- FG 102/VA1: Empty plastic tray for pieces
- FG 102/39C: Plastic tray of 3pcs pliers
- FG 102/41C: Plastic tray of 4pcs circlip pliers 8-25mm
- FG 102/42C: Plastic tray of 4pcs circlip pliers 19-60mm
- FG 102/10C: Plastic tray of 8pcs hex swivel T-Handle wrenches 7-19mm

ASSORTMENTS OF TOOLS



1° drawer



2° drawer



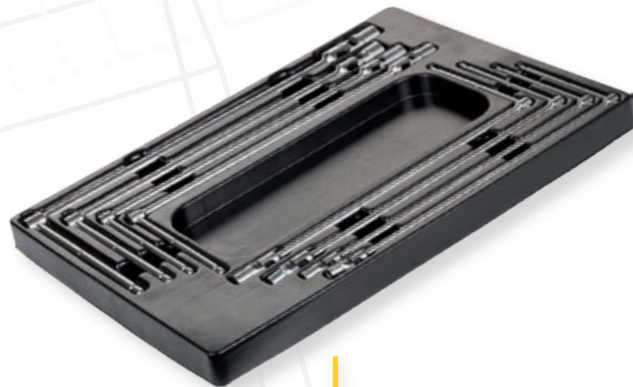
3° drawer



4° drawer



5° drawer



Assortment of 219 tools
- Application: Automotive

CODE	
FG 102/AS219	

NEW

- CONTENT:**
- **FG 102/03H:** Plastic tray of 18 combination wrenches 6-32mm
 - **FG 102/03E:** Plastic tray of 8pcs double open end wrenches 6x7-20x22mm + set of 9pcs Torx allen keys
 - **FG 102/03F:** Plastic tray of 5pcs double open end wrenches 21x23-30x32mm--
 - **FG 102/17E:** Plastic tray of 65pcs 1/4"dr. tools
 - **FG 102/21B:** Plastic tray 1/2"dr 6PT socket wrenches 8-32mm + accessories
 - **FG 102/25B:** Plastic tray of 5pcs 3/4"dr. 12PT sockets 36-50mm + accessories
 - **FG 102/48D:** Plastic tray of 40pcs 1/4"dr. bits + bit holder
 - **FG 102/45F:** Plastic tray of 6pcs PHILLIPS screwdrivers
 - **FG 102/45G:** Plastic tray of 7pcs SLOTTED screwdriver
 - **FG 102/45I:** Plastic tray of 6pcs Torx screwdrivers
 - **FG 102/65B:** Plastic tray of adjustable pliers and water pump pliers
 - **FG 102/39C:** Plastic tray of 3pcs pliers
 - **FG 102/41C:** Plastic tray of 4pcs circlip pliers 8-25mm
 - **FG 102/42C:** Plastic tray of 4pcs circlip pliers 19-60mm
 - **FG 102/10C:** Plastic tray of 8pcs hex swivel T-Handle wrenches 7-19mm



Worktop made
of sheet metal 3mm



External edge,
35mm height



Supplied with lower shelf
support in metal sheet 3mm



Drawers (optional) with ball bearing slidings
with telescopic system and central closing system
Available colors: DAREK GREY, BLUE and RED



- 3 available sizes:**
- 1.000x745x880 mm
 - 1.500x745x880 mm
 - 2.000x745x880 mm



Drawer equipped with closing system
Color: DARK GREY

CODE	
FG 129/CD	



Drawer equipped with closing system
Color: BLUE

CODE	
FG 129/CB	



Drawer equipped with closing system
Color: RED

CODE	
FG 129/CR	





**Professional workbench - 1.0m
WITHOUT drawers**

Total weight: 58Kg

CODE	DIMENSION	
FG 129/1	1.000x745x880 mm	



**Professional workbench - 1.5m
WITHOUT drawers**

Total weight: 77Kg

CODE	DIMENSION	
FG 129/1.5	1.500x745x880 mm	



**Workbench 2.0m
WITHOUT drawers**

Total weight: 100Kg

CODE	DIMENSION	
FG 129/2	2.000x745x880 mm	



**Professional workbench - 1.0m
equipped with drawer in DARK GREY color**

Total weight: 64,50Kg

CODE	DIMENSION	
FG 129/D1	1.000x745x880 mm	

- Worktop in metal sheet 3mm
- Lower sheet support in metal sheet 3mm
 - 3 legs
- 1 drawer equipped with closing system
 - Arrangement for ground fixing
 - Structure painted with epoxy paint

**Professional workbench 1.0m
equipped with drawer in BLUE color**

CODE	DIMENSION	
FG 129/B1	1.000x745x880 mm	



**Professional workbench 1.0m
equipped with drawer in RED color**

CODE	DIMENSION	
FG 129/R1	1.000x745x880 mm	





**Professional workbench - 1.5m
equipped with drawer in DARK GREY color**

Total weight: 83,50Kg

CODE	DIMENSION	
FG 129/D1.5	1.500x745x880 mm	

- Worktop in metal sheet 3mm
- Lower sheet support in metal sheet 3mm
- 3 legs
- 1 drawer equipped with closing system
- Arrangement for ground fixing
- Structure painted with epoxy paint

**Professional workbench 1.5m
equipped with drawer in RED color**

CODE	DIMENSION	
FG 129/R1.5	1.500x745x880 mm	



**Professional workbench 1.5m
equipped with drawer in BLUE color**

CODE	DIMENSION	
FG 129/B1.5	1.500x745x880 mm	





**Professional workbench - 2.0m
equipped with drawer in DARK GREY color**

Total weight: 106,50Kg

CODE	DIMENSION	
FG 129/D2	2.000x745x880 mm	

- Worktop in metal sheet 3mm
- Lower sheet support in metal sheet 3mm
 - 3 legs
- 2 drawers equipped with closing system
 - Arrangement for ground fixing
 - Structure painted with epoxy paint

**Professional workbench 2.0m
equipped with drawer in RED color**

CODE	DIMENSION	
FG 129/R2	2.000x745x880 mm	



**Professional workbench 2.0m
equipped with drawer in BLUE color**

CODE	DIMENSION	
FG 129/B2	2.000x745x880 mm	





**Professional workbench - 2.0m
Equipped with 1 drawer cabinets
- DARK GREY color**

Total weight: 121,50 Kg

CODE	DIMENSION	
FG 131/D2	2.0000x745x880H	

- Worktop in metal sheet 3mm
- 05 drawers installed on ball bearings sliding bars
- Central closing



**Professional workbench - 2.0m
- RED color**

CODE	DIMENSION	
FG 131/R2	2.0000x745x880H	

**Professional workbench - 2.0m
- BLUE color**

CODE	DIMENSION	
FG 131/B2	2.0000x745x880H	





**Professional workbench - 2.0m
Equipped with 2 drawer cabinets
- DARK GREY color**

Total weight: 156,50 Kg

CODE	DIMENSION	
FG 132/D2	2.0000x745x880H	

- Worktop in metal sheet 3mm
- 10 drawers installed on ball bearings sliding bars
- Central closing



**Professional workbench - 2.0m
- RED color**

CODE	DIMENSION	
FG 132/R2	2.0000x745x880H	

**Professional workbench - 2.0m
- BLUE color**

CODE	DIMENSION	
FG 132/B2	2.0000x745x880H	



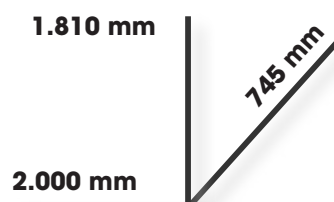


**Professional workbench - 2.0m equipped with
2 drawers and panel tool holder in
GREY color**

Total weight: 121,50 Kg

CODE	
FG 133/D2	

- Worktop in metal sheet 3mm
- Lower sheet support in metal sheet 3mm
- 3 legs
- 2 drawers equipped with closing system
 - Arrangement for ground fixing
 - Structure painted with epoxy paint
- Panel tool holder with aluminum shutter with lock system



NEW



FG 133/R2

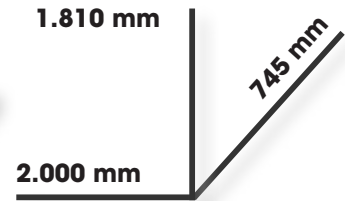
FG 133/B2

WORKBENCHES



**Workbench - 2.0m
equipped with drawer
cabinet and panel tool
holder**

CODE	
FG 134/D2	



NEW



FG 134/R2

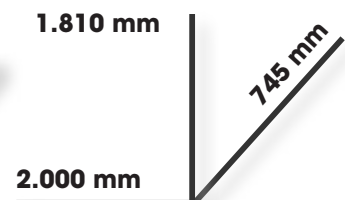


FG 134/B2



**Workbench - 2.0m
equipped with drawer
cabinets and panel
tool holder**

CODE	
FG 135/D2	



NEW



FG 135/R2



FG 135/B2

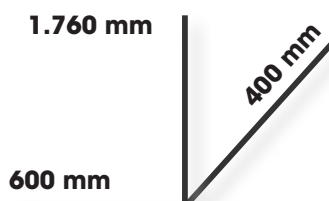




Cabinet with 4 shelves + base plate

Total weight: 29Kg

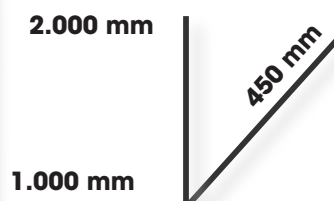
CODE	DIMENSION	
FG 109/D1	600x400x1.760 mm	



Cabinet with 4 shelves + base plate

Total weight: 72Kg

CODE	DIMENSION	
FG 110/D1	1.000x450x2.000 mm	





Panel tool holder with aluminum shutter

- Weight: 50Kg
- Aluminium shutter
- 2 plastic handles
- central closing system
- two holes on back for wall mounting



CODE	
FG 128/GR2	

NEW



FG 128/RR2 FG 128/BR2

930 mm

160 mm

1.700 mm



Tools panel equipped with shelf

CODE	DIMENSION	
FG 129/GR1	1.000x1.000x1.0 mm	



FG 129/RR1 FG 129/BR1

NEW



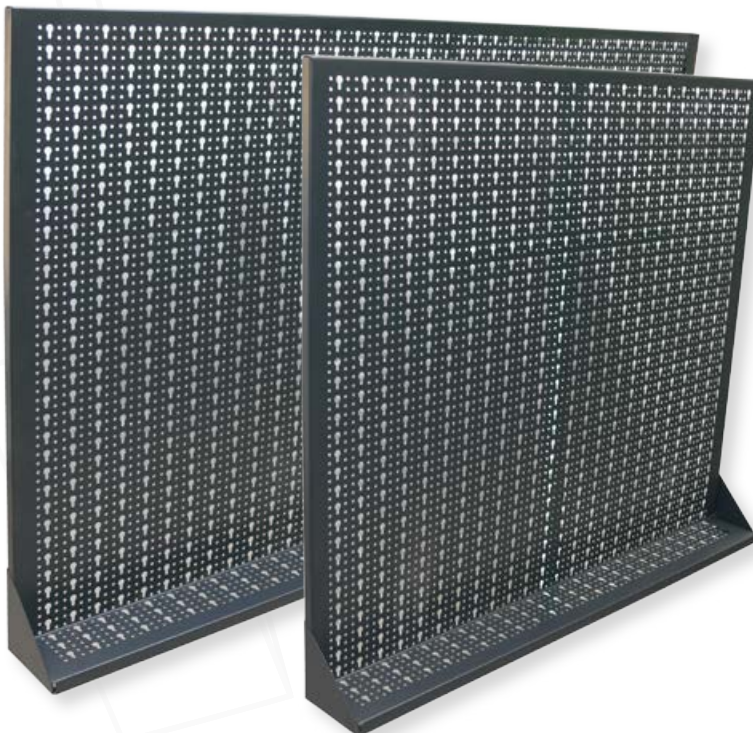
Tools panel equipped with shelf

CODE	DIMENSION	
FG 129/GR1.5	1.500x1.000x1.0 mm	



FG 129/RR1.5 FG 129/BR1.5

NEW

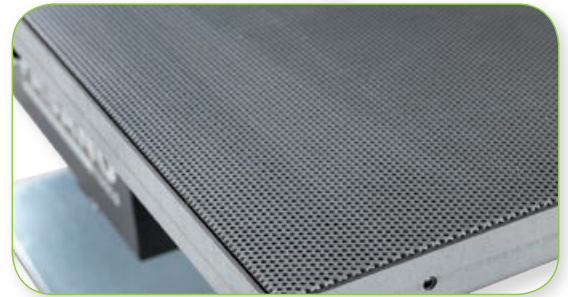


Hooks

CODE	Length	
FG GA/80	80mm	
FG GA/120	120mm	



Special tray shelf and slope features central holes to allow liquid to flow out quickly into the basin below



Supplied with lower shelf support in metal sheet 3mm

Collection tank equipped with removable drain cock
Capacity: 30 liters



Exhaust faucet



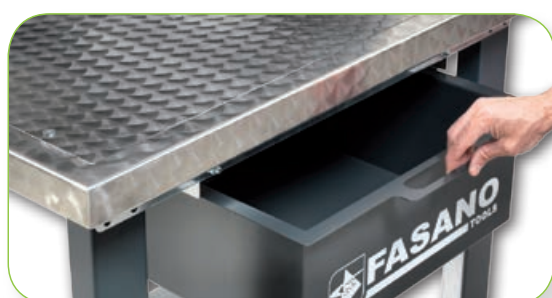


MADE
IN ITALY



Special tray shelf and slope features central holes to allow liquid to flow out quickly into the basin below

Particularly suitable to work on automatic transmissions



Collection tank equipped with removable of drain cock
Capacity: 30 liters



**Workbench 1.0mt
- Stainless steel top**

CODE	DIMENSION	
FG 130/AL1	1.000x750x920 mm	



**Workbench 1.0mt
- Simple stainless steel top**

CODE	DIMENSION	
FG 130/A1	1.000x750x920 mm	



**Workbench 1.0mt
- sheet metal top
DARK COLOUR**

CODE	DIMENSION	
FG 130/D1	1.000x750x920 mm	



**Workbench 1.0mt
- sheet metal top
BLUE COLOUR**

CODE	DIMENSION	
FG 130/B1	1.000x750x920 mm	

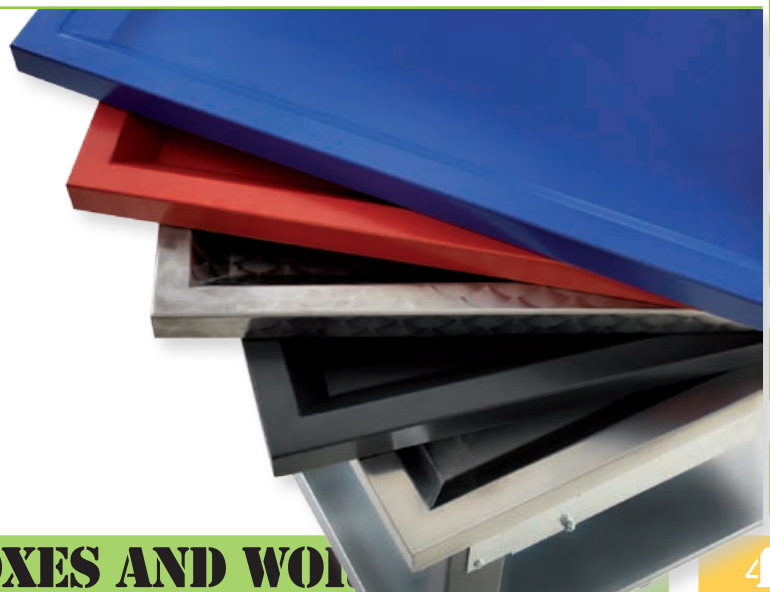


**Workbench 1.0mt
- sheet metal top
RED COLOUR**

CODE	DIMENSION	
FG 130/R1	1.000x750x920 mm	

**2 KIND OF MATERIALS:
Stainless steel and Sheet metal**

5 COLOURS' VERSIONS:





3 different DIMENSIONS:

- SMALL: 350x750x875mm
- MEDIUM: 430x930x885mm
- GIANT: 560x1.000x950mm

3 different sizes of wheels based on the trolley size (Ø80, 100 o 125mm)

2 fixed wheels, 1 swivel wheel and 1 swivel wheel equipped with brake



Structure in metal sheet 1.5mm for models A and B e 2.0mm for model C
modèle C



Tool carrying trolley

- Metal sheet 1.5mm
- Professional wheels with zinc plate, swivel housing, plate fitting, with double ball race
- 2 fixed wheels, 1 swivel + 1 swivel w/brake (Ø80mm)
- Total weight: 19.5Kg

CODE	DIMENSION	
FG 106/A	350x750x875mm	

Tool carrying trolley

- Metal sheet 1.5mm
- Professional wheels with zinc plate, swivel housing, plate fitting, with double ball race
- 2 fixed wheels, 1 swivel + 1 swivel w/brake (Ø100mm)
- Total weight: 22.0Kg

CODE	DIMENSION	
FG 106/B	430x930x885mm	



Tool carrying trolley

- Metal sheet 1.5mm
- Professional wheels with zinc plate, swivel housing, plate fitting, with double ball race
- 2 fixed wheels, 1 swivel + 1 swivel w/brake (Ø125mm)
- Total weight: 44.0Kg

CODE	DIMENSION	
FG 106/C	560x1.000x950mm	

