



# 5,5 N-WAY / 5,5 N-WAY IN

FOUR POST HYDRAULIC LIFT

## Basic information



Personal cars and commercial vehicles

**5500**

Loading capacity [kg]

**2970**

Maximum clear distance of posts [mm]

**5000**  
**5450**

Clear distance of posts [mm]

**505**

Platform width [mm]

**1950**

Maximum height of platform [mm]

**3,0**

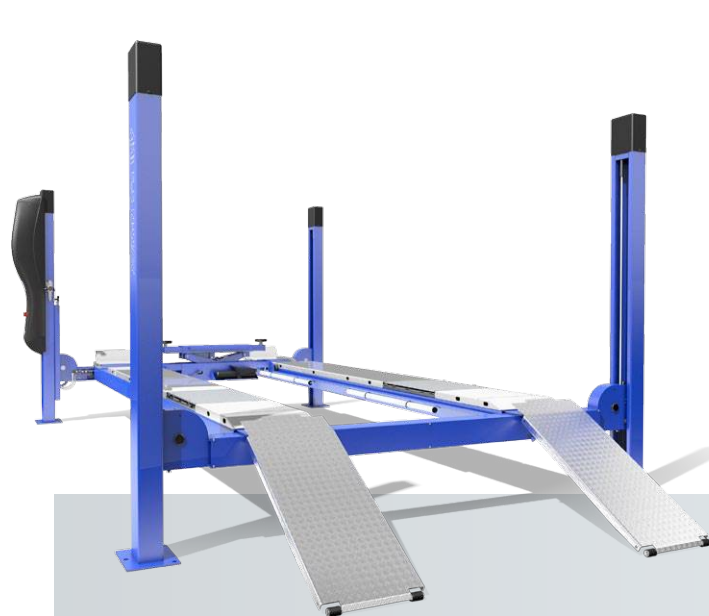
Motor [kW]



### AMI 5,5 N-WAY

Configuration:

- AL platform protection
- 3D KIT + slip plates 2x1650 mm
- 3D KIT + slip plates 2x750 mm
- 3D KIT + slip plates 4x750 mm

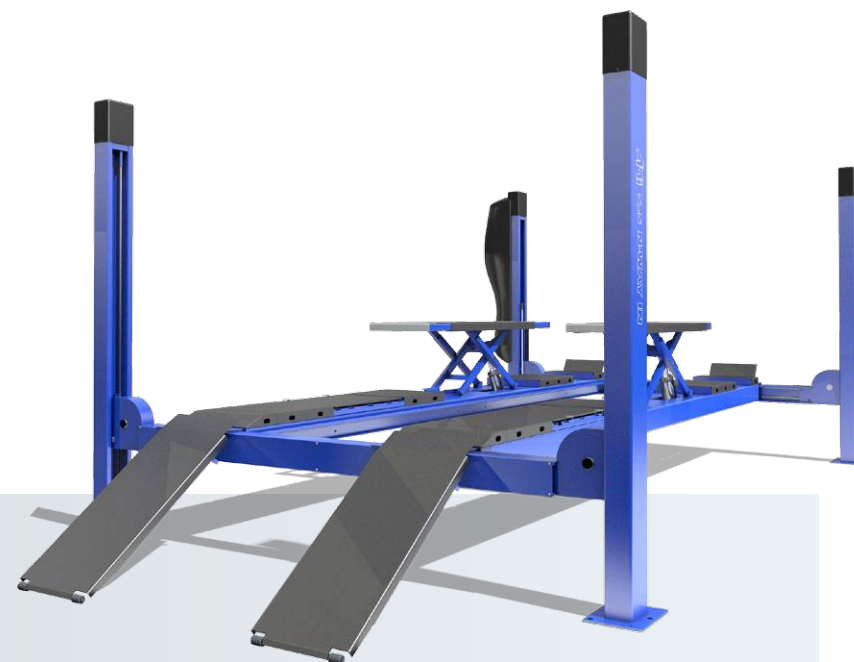


- LOADING CAPACITY 5500 kg
- DESIGNED FOR 3D WHEEL ALIGNMENT
- VARIABILITY IN PLATFORM COVERS INSTALLATION - 3D KIT
- VARIABILITY IN SLIP PLATES INSTALLATION
- SYMMETRIC DESIGN

### AMI 5,5 N-WAY IN

Configuration:

- 3D KIT + slip plates 2x1650 mm
- 3D KIT + slip plates 2x750 mm
- 3D KIT + slip plates 4x750 mm



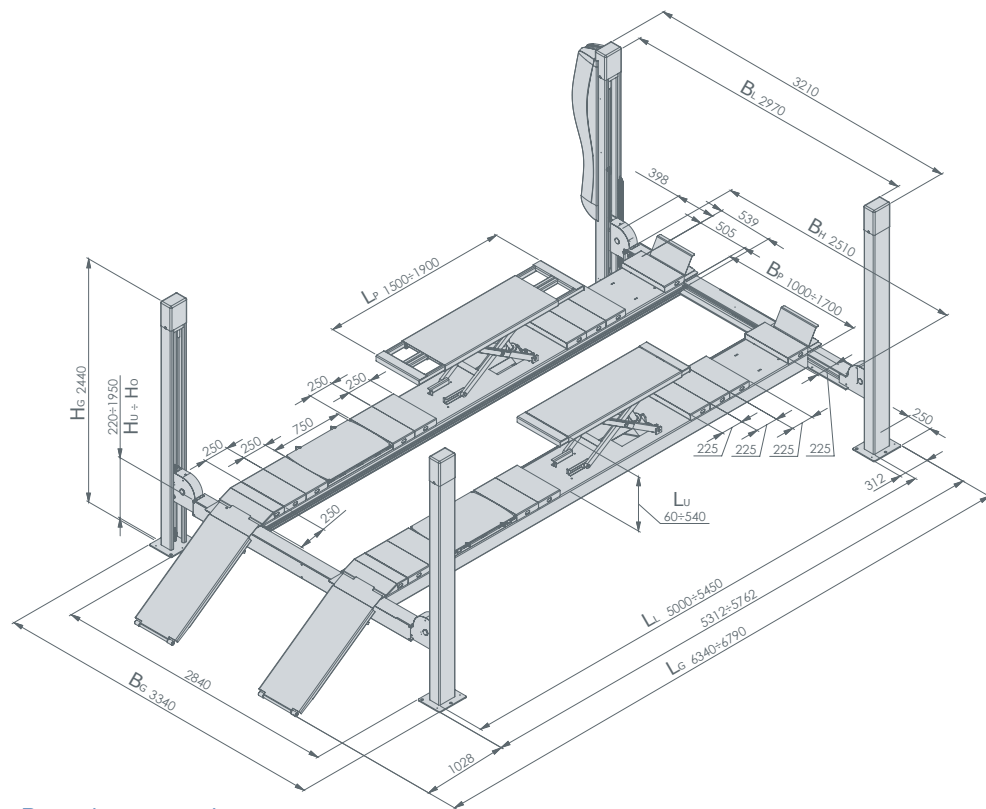
- ADJUSTABLE PLATFORMS (1000 mm ÷ 1700 mm)
- ERGONOMIC POWER PACK COVER
- EXCELLENT RESISTANCE OF LIFT STRUCTURE-STATIC AS WELL AS DYNAMIC
- HYDRAULIC DRIVE HIGHLY EFFICIENT AND ECONOMICAL
- ELECTRO-MAGNETIC SAFETY LOCK
- ACOUSTIC WARNING FINAL DESCENT PHASE
- CZECH MADE
- LIFTS ARE DESIGNED AND MANUFACTURED IN ACCORDANCE WITH ČSN EN 1493:2010



# TECHNICAL DATA

## FOUR POST HYDRAULIC LIFT

### Technical drawing for four post hydraulic lifts



### Packing dimensions

TYPE	LENGTH	WIDTH	HEIGHT	GROSS WEIGHT
L=5000 mm	5,25 m	1,15 m	0,7 m	1450/1500 kg
L=5450 mm	5,7 m	1,15 m	0,7 m	1490/1540 kg

▪ right to make technical changes reserved

### Technical data for AMI 5,5 N-WAY / IN

	L=5000 mm	L=5450 mm
Maximum loading capacity	5500 kg	
Maximum lifting time	40 s	
Minimum lowering time	30 s	
Power system	TN-S 3/N/PE 400/230V AC, 50 Hz	
Motor	3,0 kW	
Total height $H_G$	2440 mm	
Maximum height of platform $H_O$	2010 mm	
Minimum height of platform $H_U$	230 mm	
Platform gauge $B_P$	1000 mm ÷ 1700 mm	
Platform width	505 mm	
Maximum clear distance of posts $B_L$	2970 mm	
Maximum clearance width $B_H$	2510 mm	
Total width $B_G$	3340 mm	
Maximum length $L_G$	6340 mm	6790 mm
Clear distance of posts $L_L$	5000 mm	5450 mm

▪ right to make technical changes reserved



# ACCESSORIES

## FOUR POST HYDRAULIC LIFT

### Hydraulic jacking beam AMI J 2,0 RH a 2,5 RH



- Hydraulic jacking beam with manual pump, loading 2000 kg and 2500 kg.

### Hydraulic jacking beam AMI J 2,0 VH a 2,5 VH



- Hydraulic jacking beam with pneumatic pump, loading 2000 kg and 2500 kg. (necessary air distribution)

### Lowering entering



- Lowering entering on platform from 11° to 6°.

### Electro box



- Electro box 2x230 V, 395094-00-E4
- Air connection, 395093-01-00

### Air distribution



- Air-line connection between lift platforms, 395093-02-00

### Lighting



- Working space lighting of lift platforms, 395092-00-E2

### Clearance option



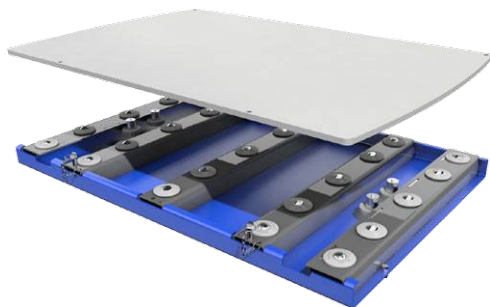
- 2nd entering on platform
- Inclination of ramp 11°.



# ACCESSORIES

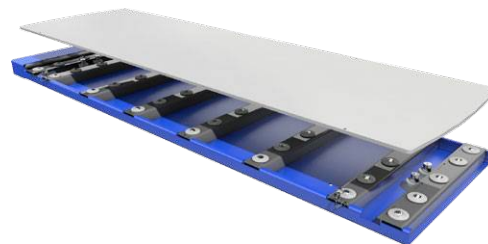
FOUR POST HYDRAULIC LIFT

## Slip plates 750



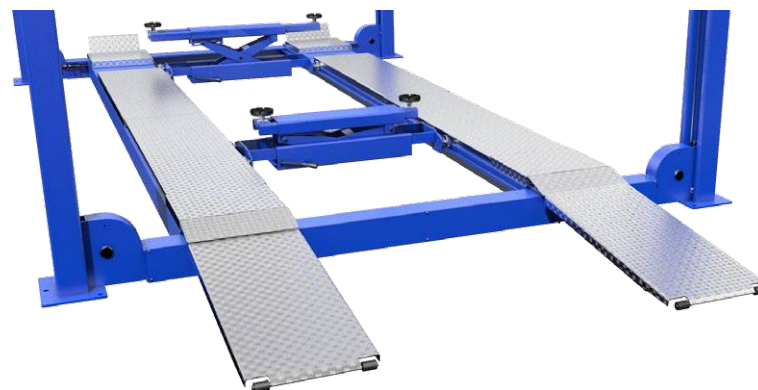
- Slip plates for 3D wheel alignment (L=750 mm)
- AMI 5,5 N-WAY, AMI 5,5 N-WAY IN

## Slip plates 1650



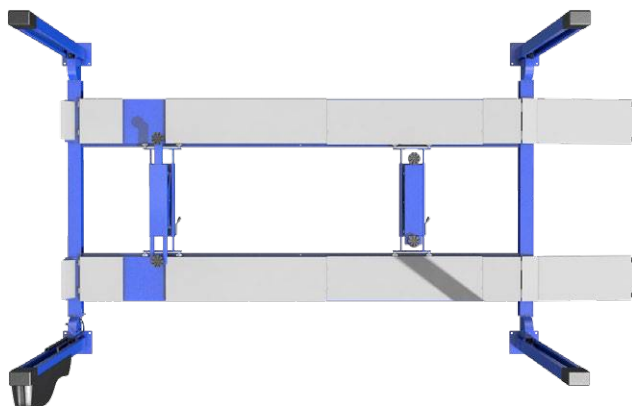
- Slip plates for 3D wheel alignment (L=1650 mm)
- AMI 4,0 N-WAY, AMI 4,0 N-WAY IN
- AMI 5,5 N-WAY, AMI 5,5 N-WAY IN

## Platform protection



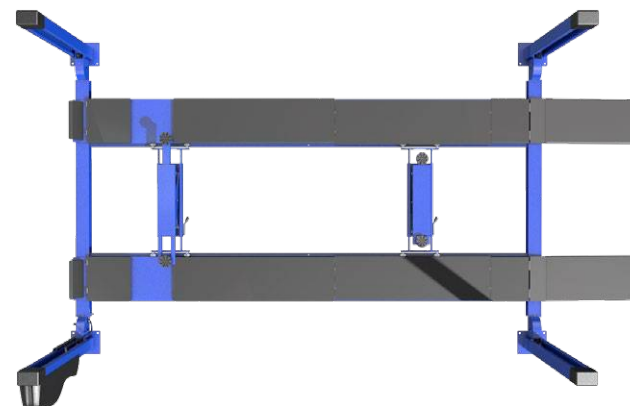
- AL platform protection.

## 3D KIT



- Set for measuring wheel alignment with 3D technology.
- Platform length variant L=4800 mm for AMI 4,0 N-WAY, AMI 4,0 N-WAY IN.

## 3D KIT with comaxit surface treatment



- Platform length variants L=5000 mm and L=5450mm for AMI 5,5 N-WAY, AMI 5,5 N-WAY IN.

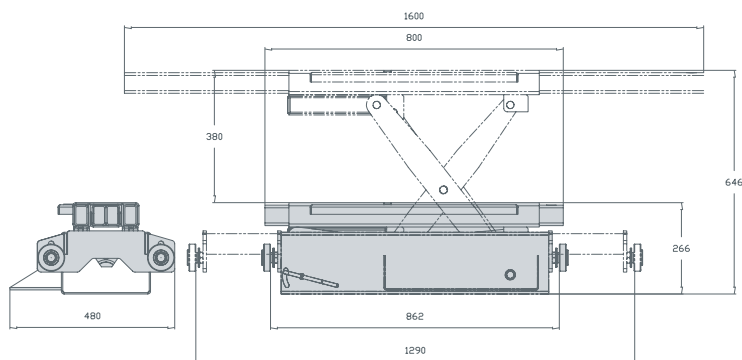
- Comaxit surface treatment for longer lifetime as protection against aggressive environment.



# J 2,0 / 2,5 RH / VH

HYDRAULIC JACKING BEAM

## Basic information



## Packing dimensions

TYPE	LENGTH	WIDTH	HEIGHT	GROSS WEIGHT
AMI J 2,5 RH, VH / AMI J 2,0 RH, VH	0,81 m	0,42 m	0,22 m	130 / 120 kg

• right to make technical changes reserved

## Technical data for AMI J 2,0 / 2,5 RH / VH

	AMI J 2,5 RH, VH	AMI J 2,0 RH, VH
Maximum loading capacity	2500 kg	2000 kg
Maximum lifting time	23 sec.	17 sec.
Minimum lowering time	43 sec.	27 sec.
Working pressure	30 MPa	20 MPa
Oil viscosity	32 mm <sup>2</sup> s <sup>-1</sup>	32 mm <sup>2</sup> s <sup>-1</sup>
Net weight	130 kg	120 kg
Maximum arm distance	1600 mm	1600 mm
Maximum arm height	646 mm	545 mm
Minimum arm height	266 mm	190 mm
Minimum arm distance	800 mm	780 mm
Maximum track	1290 mm	1180 mm
Minimum track	862 mm	780 mm
Total length	1650 mm	1650 mm
Total width	480 mm	385 mm
Total height	681 mm	515 mm

- right to make technical changes reserved
- RH - with manual pump
- VH - with pneumatic pump

