

# CONSULT-III Software Installation Instructions (after V08.10.01)

The installation procedure of CONSULT-III software is changed after V08.10.01.

When updating the software from the previous version (before V08.09.01), please perform the installation as the following procedure.


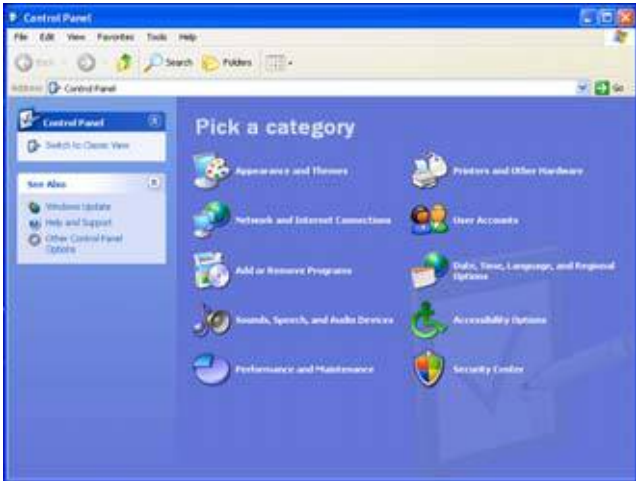
\* Before installing this version, it is necessary to uninstall the previous CONSULT-III.

New procedures are the following 2 steps.

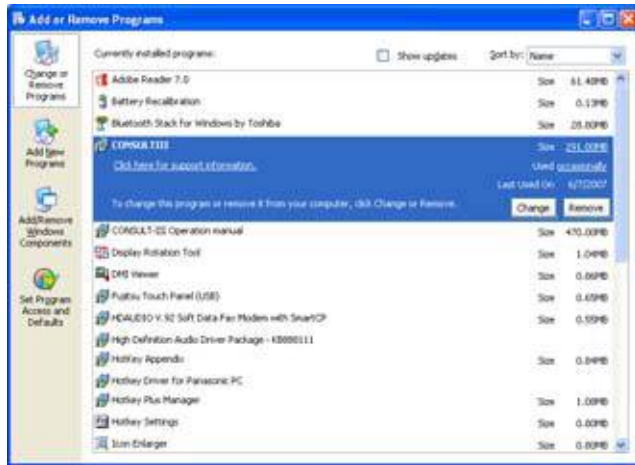
1. Uninstallation of the previous version of CONSULT-III software

2. Installation of a new version of CONSULT-III software (First install).

1. Uninstallation of the previous version of CONSULT-III software

<p>1.1.</p> 	<p>* Before starting the procedure, always connect the AC adapter to the PC.</p> <p>1.1.1. Connect the AC adapter to the PC.</p> <p>1.1.2. Touch "start".</p> <p>1.1.3. Touch "Control Panel".</p>
<p>1.2.</p> 	<p>1.2.1. Touch "Add or Remove Programs".</p>

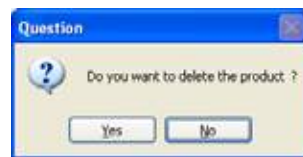
1.3



1.3.1. Touch "CONSULTIII".

1.3.2. Touch "Remove".

1.4.



1.4.1. Touch "Yes".

## 2. Installation of a new version of CONSULT-III software (First install).

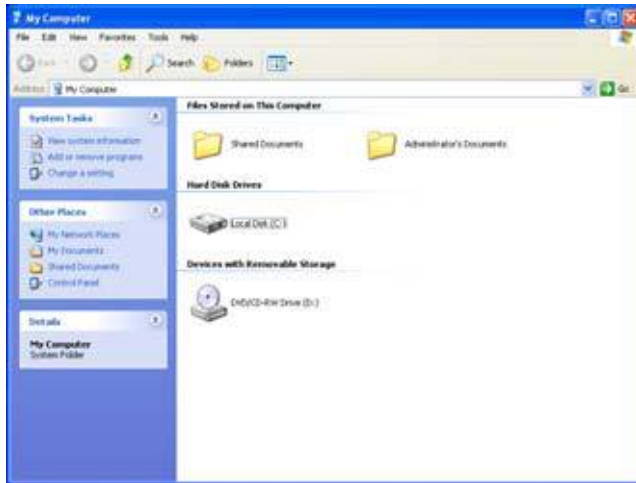
2.1.



2.1.1. Touch "start".

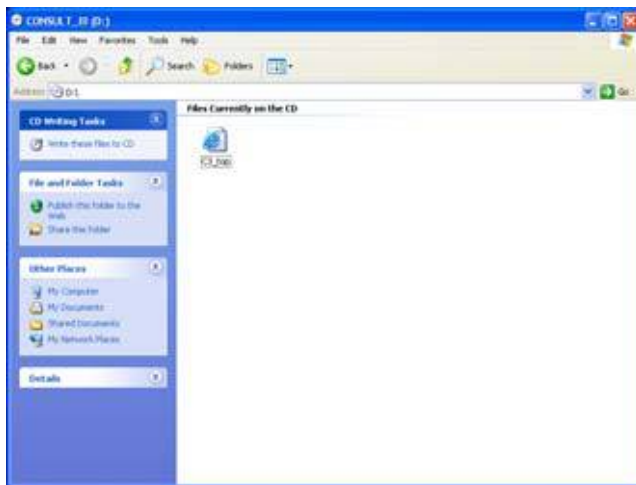
2.1.2. Touch "My Computer".

2.2.



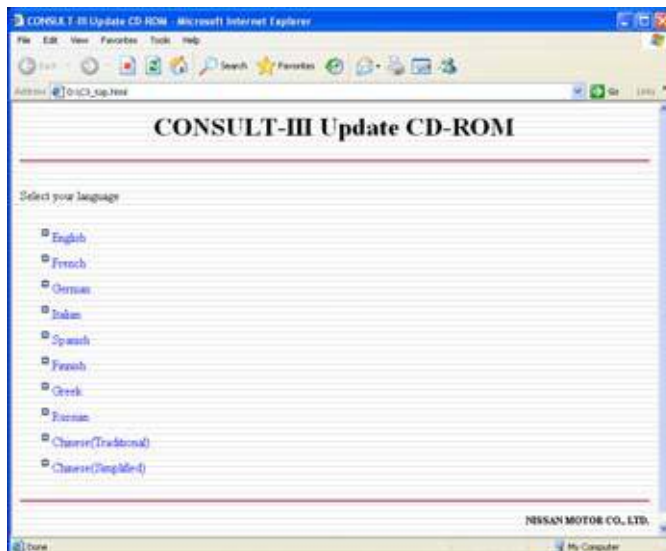
2.2.1. Double-touch the CD icon labeled "CONSULT\_III".

2.3.



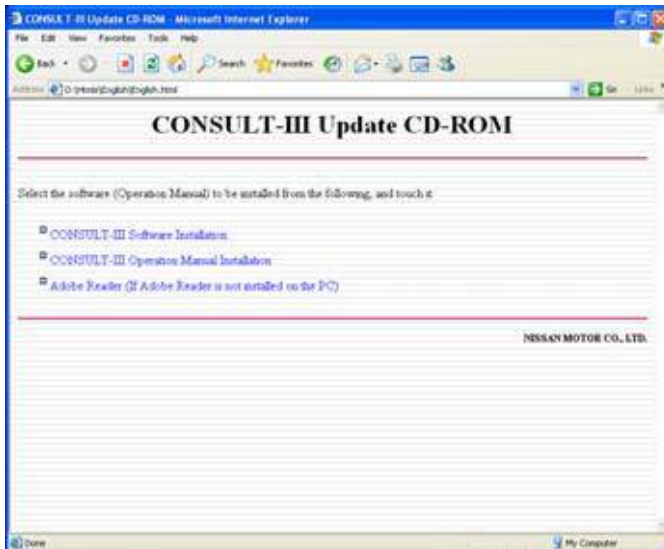
2.3.1. Double-touch "C3\_top".

2.4.



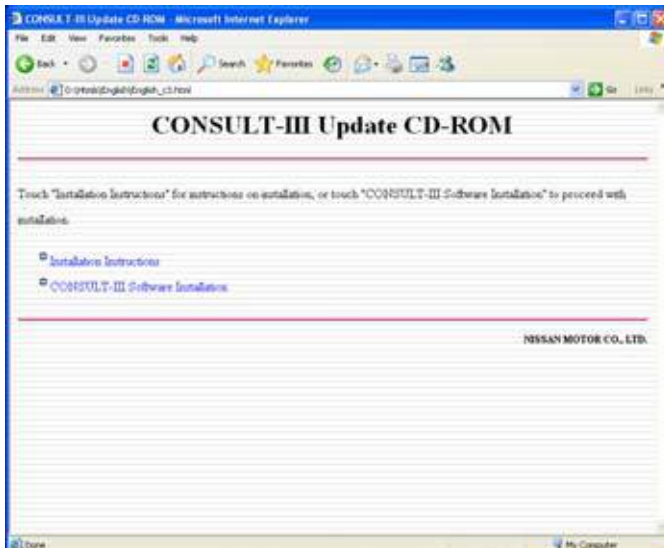
2.4.1. Touch your language.

2.5.



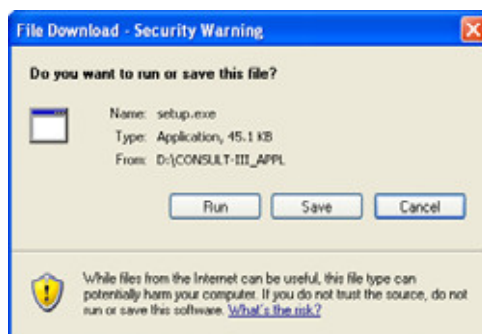
2.5.1. Touch "CONSULT-III Software Installation".

2.6.



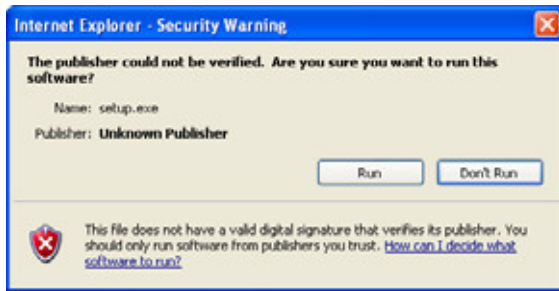
2.6.1. Touch "CONSULT-III Software Installation".

2.7.



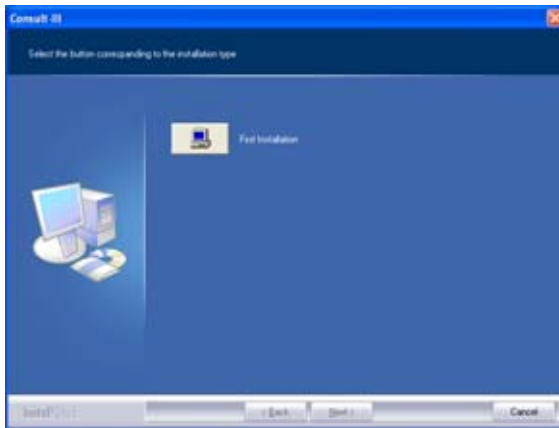
2.7.1. Touch "Run".

2.8.



2.8.1. Touch "Run".

2.9.



2.9.1. Touch "First Installation".

2.10



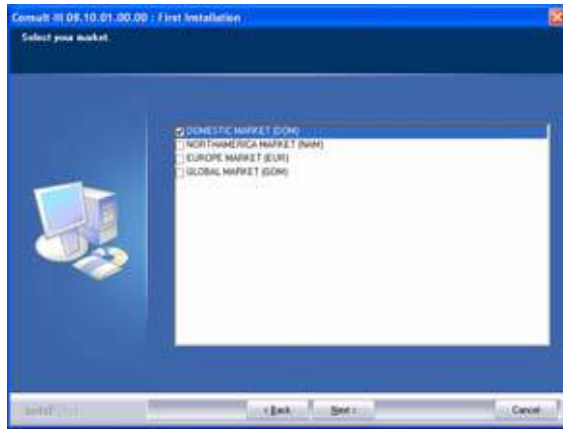
2.10.1 Touch "I accept the terms of the license agreement".

2.11



2.11.1. Touch "Next".

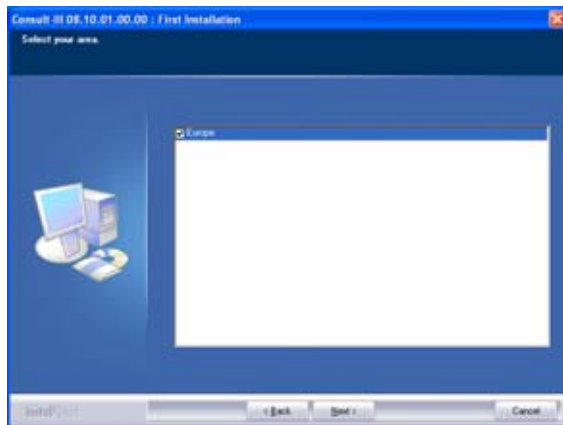
2.12.



2.12.1. Touch Your market.

2.12.2. Touch "Next".

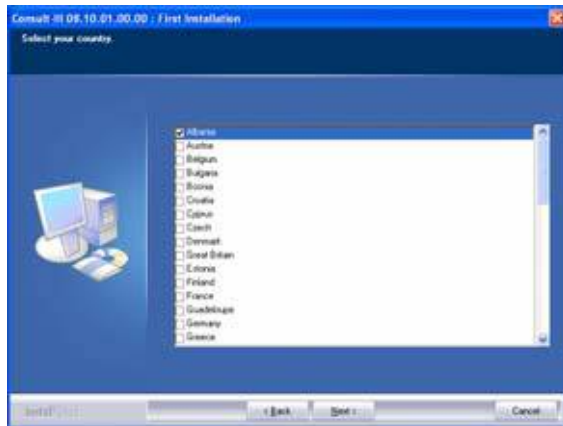
2.13.



2.13.1. Touch Your area.

2.13.2. Touch "Next".

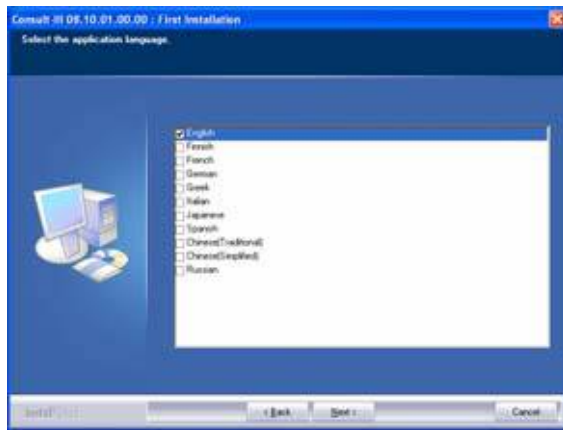
2.14.



2.14.1. Touch Your country.

2.14.2. Touch "Next".

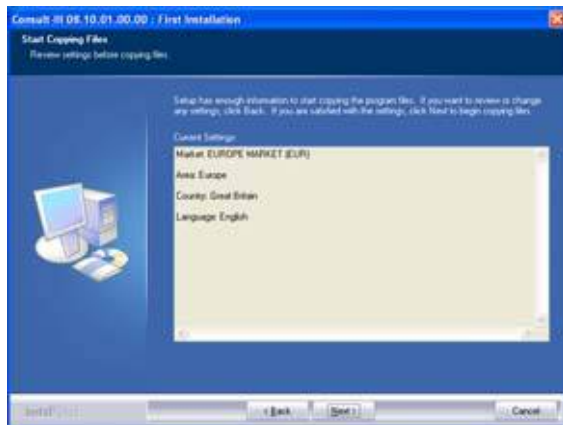
2.15.



2.15.1. Touch the application language.

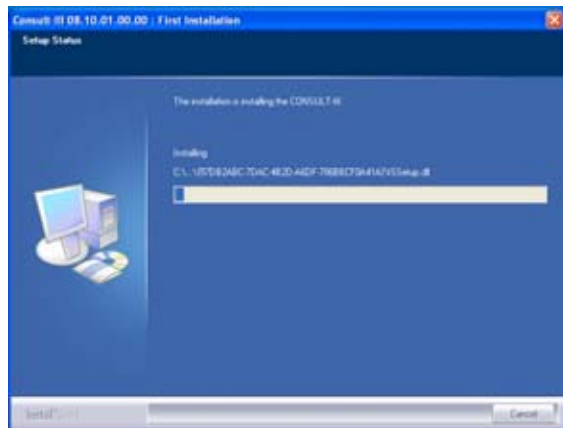
2.15.2. Touch "Next".

2.16.



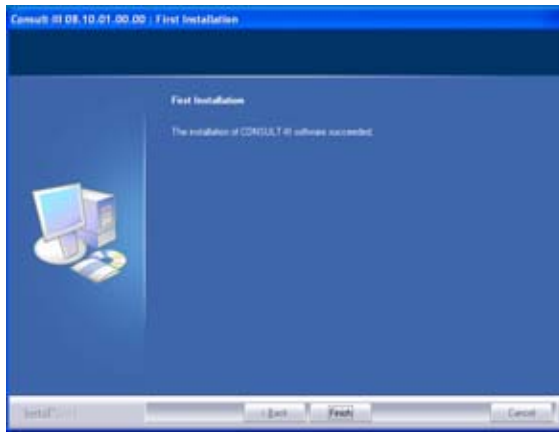
2.16.1. Touch "Next".

2.17.



\* The installation is started.

2.18.



2.18.1. Touch "Finish".