

**NEW**

### Next Evo



#### Standard equipment:



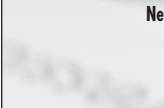
**Next 55**  
 • 5.511.1113  
 PPL brush Ø 533 mm - 21"



**Next 66**  
 • 2 x 5.511.1105  
 PPL brush Ø 330 mm - 13"



**Next 55**  
 • 4.508.X468  
 Front squeegee blade L.830 mm  
 Shore 40 Th. 2.5 mm  
 • 4.508.X467  
 Rear squeegee blade L.870 mm  
 Shore 40 Th. 3 mm



**Next 66**  
 • 4.508.1524  
 Front squeegee blade L.860 mm  
 Shore 33 Th. 4 mm  
 • 4.508.1523  
 Rear squeegee blade L.900 mm  
 Shore 40 Th. 4 mm



• 0.108.0059  
 On-board Battery charger  
 CBHD1-XR 24V 12A



Watch the video on youtube:  
[www.youtube.com/lavorpro](http://www.youtube.com/lavorpro)

- Designed for the maintenance and deep cleaning of large areas (up to 1.700 m<sup>2</sup>)
- Especially suitable for cleaning: car shops, sales points, gym, health care
- User friendly control panel • Hour Meter • Automatic brush lifting (model 66BTA only)
- Fully accessible recovery water tank • Automatic detergent measuring system • Big size traction wheels • Handle with control lever

	Next Evo 55BT	Next Evo 66BTA
code	8.525.1301	8.525.1302
power supply	24V	24V
scrubbing / squeegee width	550 / 800 mm	660 / 900 mm
max working capacity	2200 m <sup>2</sup> /h	2640 m <sup>2</sup> /h
detergent tank capacity	55 l / 14.5 gal	55 l / 14.5 gal
recovery tank capacity	55-65 l / 14.52-17.17 gal	55-65 l / 14.52-17.17 gal
traction	automatic	automatic
RPM / pressure on the brushes	165/30 kg / 66 lbs	175/33 kg / 72 lbs
brush motor power	550 W	2 x 400 W
detergent solution system	solenoid valve	solenoid valve
depression / vacuum motor	1200 mmH <sub>2</sub> O/400 W	1200 mmH <sub>2</sub> O/400 W
dimensions / weight	128x71x106 cm / 104 kg	128x71x106 cm / 110 kg



User friendly digital control panel. Control lever for brush operation and detergent water outflow. ON/OFF and battery cutout key switch, brush and vacuum motor switch, detergent regulation device. Thermal circuit breaker to protect vacuum motor and brush motor, battery charge level indicator.

Hour meter, clean water tank

### Optional accessories:



- 2 x 0.107.0002  
Tubular battery Pb-acid  
12V 118Ah C5



- 2 x 0.107.0063  
GEL Battery 12 MFP 105  
12V 105Ah C5



- 0.108.0001  
Battery Charger 24V 12A  
220-240/50-60



- 4.508.1178 Polyurethane  
front blade L.830 TH. 3
- 4.508.1177 Polyurethane  
rear blade L.870 TH. 4
- 4.508.1526 Polyurethane  
front blade L.860 TH. 4
- 4.508.1525 Polyurethane  
rear blade L.900 TH. 4



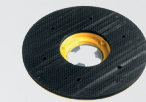
- 5.511.1114  
Tynex brush Ø 533 mm-21"
- 5.511.1106  
Tynex brush Ø 330 mm-13" 2x



- 5.511.1794  
PPL brush Ø 533 mm-21"
- 5.511.1255  
PPL 0,03 brush Ø 330 mm-13"  
2x



- 5.511.1207  
PES brush Ø 533 mm-21"
- 5.511.1202  
PES brush Ø 330 mm-13" 2x



- 5.511.1115  
EWU pad driver Ø 533mm-21"
- 5.511.1107  
EWU pad driver Ø 330mm-13"



- 6.508.0035 - Ø 533 mm-21"- beige
- 6.508.0042 - Ø 533 mm-21"- green
- 6.508.0049 - Ø 533 mm-21"- black
- 6.508.0030 - Ø 340 mm-13"- beige
- 6.508.0037 - Ø 340 mm-13"- green
- 6.508.0044 - Ø 340 mm-13"- black

level indicator. Detergent regulation device. Recovery tank drain hose with adjustable flow system. Automatic brush lifting (only model 66 BTA).



Automatic detergent dosing system. Fully accessible recovery water tank with visual inspection. Easy access and simple service of the components without use of tools.



Battery trolley for a quick and easy battery change. Big size wheels for better maneuverability and effortless use.

