

Testmaster PT40

Plate brake tester



Application

- Check-in
- Repair and maintenance
- Test
- General inspection

Description:

- Cabinet with display for read-out of brake values
- Integrated radar sensor
- 2 galvanized brake plates with expanded metal
- Delivered with 15 m cable
- No special foundation requirements, simple surface-mounting with low construction height of only 50 mm (also available for recession in floor)
- Easy installation, 240 V power connection
- Wear resistant and modern electronic strain gauge measuring system

Installation:

- Surface-mounting
- Recession

Versions:

- Galvanized test plates with expanded metal

Optional extras:

- Installation kit, for surface-mounting
- Installation kit, for recession
- Galvanized base frame
- Wall-bracket for digital display
- Pedestal
- Metal cable cover
- PC-connection kit for ASA live stream (for German market)
- Mini calculator ASA live stream
- External radar sensor

Special equipment on request!



Scan the QR-Code for detailed product information.

Further Information on www.autopstenhoj.com

autop Maschinenbau GmbH

Sandkampstraße 90
48432 Rheine | Germany

+49 5971 8602-02

+49 5971 8602-25

info@autopstenhoj.com

STENHØJ A/S

Barrit Langgade 188-190
DK-7150 Barrit

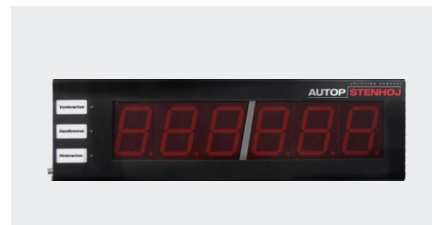
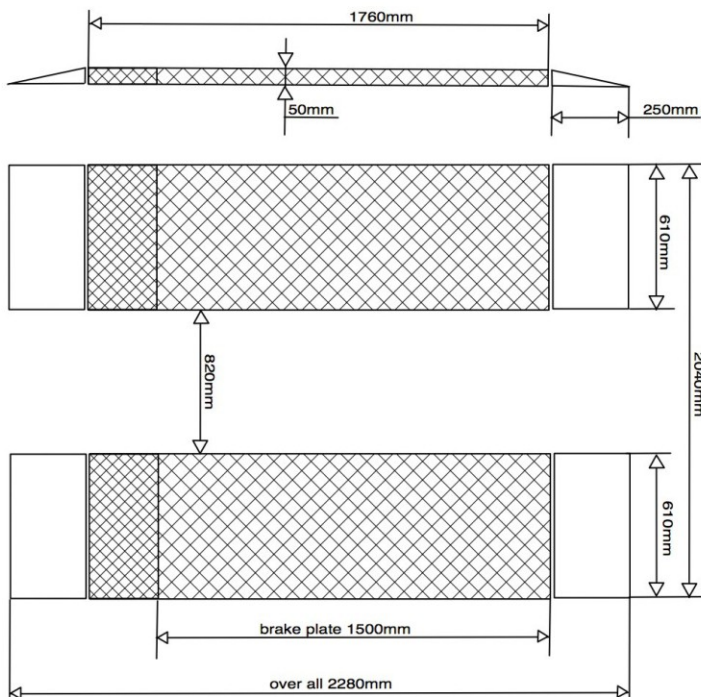
+45 76 82 13 30

+45 76 82 13 31

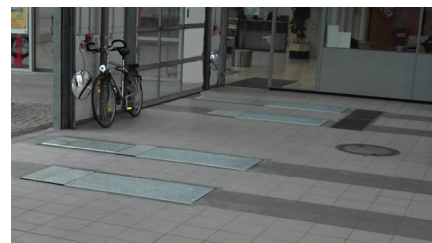
info@autopstenhoj.com

Technical data	
Drive-over load	4,000 kg
Test width	variable
Test load	4,000 kg
Fuse	10 A inert
Power supply	230 V, 50 / 60 Hz
Brake force	max. 9.99 kN
Dimensions display (W x H x D)	550 x 180 x 55 mm
Dimensions brake plate (L x W x H)	1,760 x 610 x 50 mm

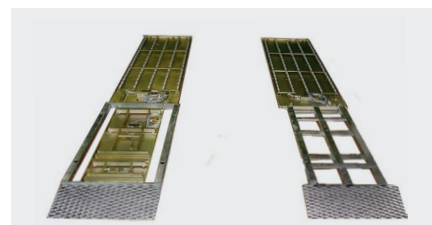
Additional accessories at www.autopstenhoj.com



Digital display



Application Testmaster PT405



Galvanized base frame